



Blueberry Cottage Wilsons Way

Meopham DA13 0DW

Offers Around £750,000



Nestled in the charming area of Meopham, Wilsons Way presents a delightful opportunity to acquire a characterful detached house, built in 2006. This splendid property boasts a generous 1,216 square feet of living space, featuring three well-appointed bedrooms, each with its own en-suite, ensuring comfort and privacy for all residents. The 4th bedroom and en-suite is located in the annexe.

The home is set within a gated property, providing an added layer of security and peace of mind. A lovely garden surrounds the house, perfect for enjoying the outdoors or entertaining guests. Additionally, the property includes a self-contained annexe to include a bedroom, kitchen, lounge and shower room, ideal for guests or as a multi generational household, along with a detached garage that features a convenient store room above.

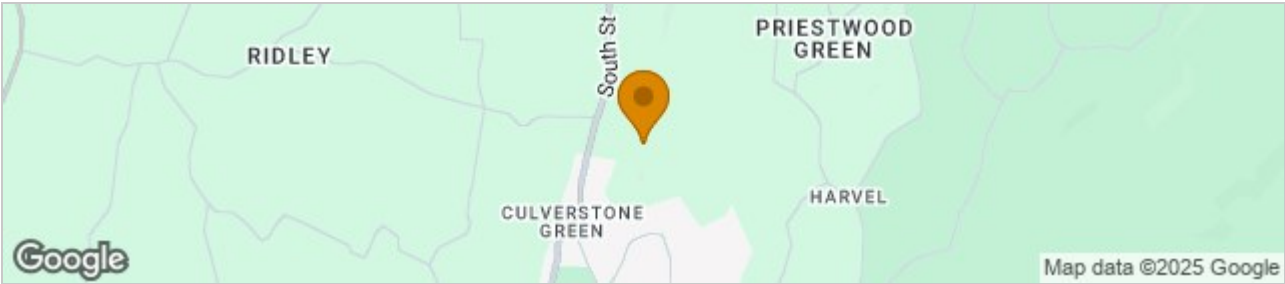
Inside, the house is adorned with a country-style kitchen that invites culinary creativity, while the inviting reception room showcases a feature fire with a log burner, perfect for cosy evenings. The property is energy efficient, holding a C-rated EPC, and is equipped with solar panels, contributing to lower energy costs.

Situated in a highly sought-after area, this home offers wonderful countryside walks nearby, allowing residents to enjoy the natural beauty of the surroundings. Furthermore, excellent transport links via road and rail make commuting a breeze, connecting you to nearby towns and cities.

With parking available and a council tax band E, this property is an exceptional find for those seeking a blend of comfort, convenience, and character in a picturesque setting. Do not miss the chance to make this charming house your new home.

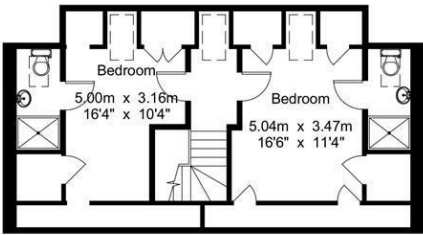


Area Map

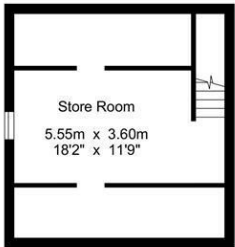


Floor Plans

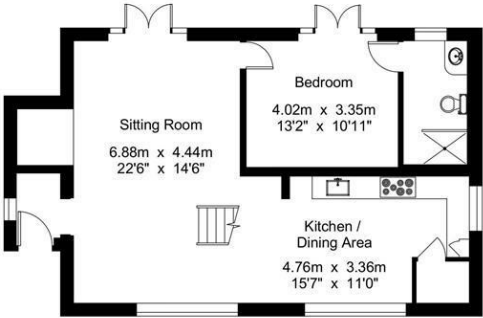
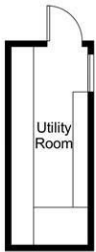
House - Gross Internal Area : 136.1 sq.m (1464 sq.ft.)
Garage - Gross Internal Area : 64.5 sq.m (694 sq.ft.)
Annexe - Gross Internal Area : 34.1 sq.m (367 sq.ft.)
Utility Room - Gross Internal Area : 10.7 sq.m (115 sq.ft.)



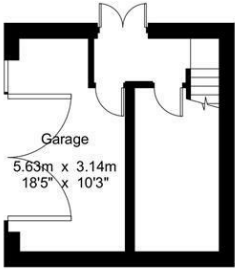
First Floor



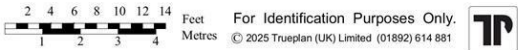
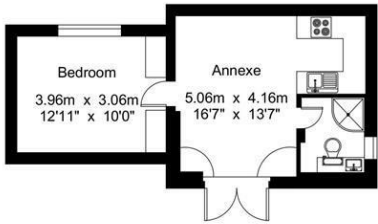
First Floor



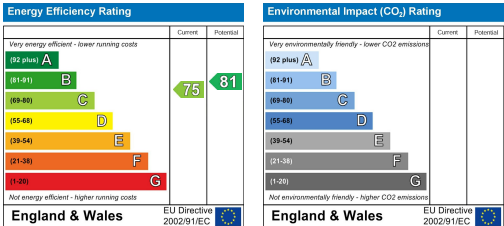
Ground Floor



Ground Floor



Energy Efficiency Graph



These particulars, whilst believed to be accurate are set out as a general outline only for guidance and do not constitute any part of an offer or contract. Intending purchasers should not rely on them as statements of representation of fact, but must satisfy themselves by inspection or otherwise as to their accuracy. No person in this firms employment has the authority to make or give any representation or warranty in respect of the property.