



4 Fitzgilbert Close, Gillingham, ME7 2WE

This fantastic 5 bedroom family home in the sought after modern development known as Sovereign Quarter, surrounding Grace Manor House in Gillingham. The property boasts generous living accommodation throughout perfectly arranged over 151 square meters.

The entire house has all neutral décor making it easy to put on your personal stamp. Upon entering via the large hallway you will find access to a cloak room, generous lounge and dining room, the fitted kitchen and utility can be found to the rear of the property overlooking a good sized garden. Situated on the first floor are three bedrooms with an en-suite shower room to the master and a family bathroom. The second floor comprises two further double bedrooms and another shower room.

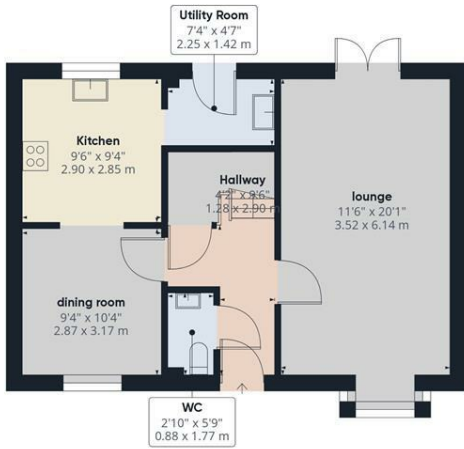
Added benefits include gas central heating, double glazed windows, front and rear gardens, a garage, a driveway with parking for two cars.

The property is conveniently located within easy access to M2/A2 Motorway, and local schools and shops and internal viewings are essential, Call MMS today!! Minimum household income required is £75,000

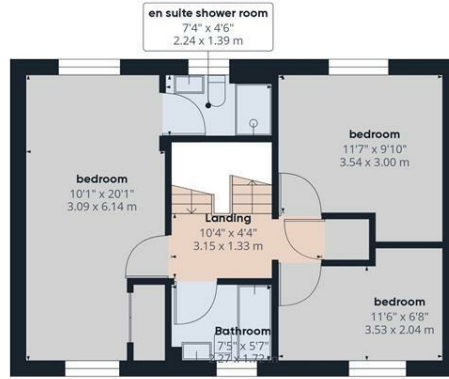
5 WEEK DEPOSIT £2884*COUNCIL TAX BAND F****EPC RATING C****AVAILABLE NOW

- AVAILABLE NOW
- MINIMUM INCOME £75,000
- 5 BEDROOMS
- GOOD SIZE GARDEN
- DRIVEWAY FOR 2 CARS
- GARAGE
- EN-SUITE
- COUNCIL TAX BAND F
- TWO RECEPTION ROOMS

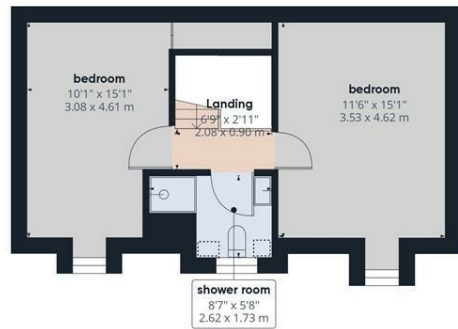
£2,500 Per Calendar Month



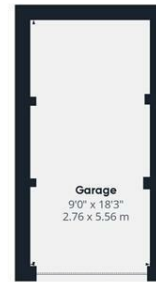
Ground Floor Building 1



Floor 1 Building 1



Floor 2 Building 1



Ground Floor Building 2

Approximate total area^m
 1722.29 ft²
 160.01 m²

Reduced headroom
 3 ft²
 0.28 m²

Excluding balconies and terraces

Reduced headroom (below 1.5m/4.92ft)

While every attempt has been made to ensure accuracy, all measurements are approximate, not to scale. This floor plan is for illustrative purposes only.

GIRAFFE360

