




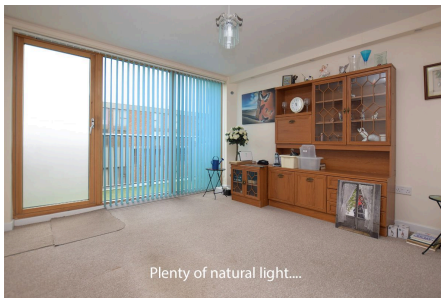
RUSSEN & TURNER
www.russenandturner.co.uk

COMMERCIAL PROPERTY SURVEYORS & VALUERS
BUILDING & PARTY WALL SURVEYORS
ARCHITECTURAL DESIGNERS
ESTATE AGENTS

Flat 4 2 Millfleet Court, Stonegate Street, King's Lynn, PE30 5HX

£99,995

 2  1  1



Set in the centre of King's Lynn town you will find this 2 double bedroom maisonette which is set over 3 storeys and is available with no onward chain.

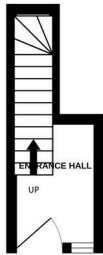




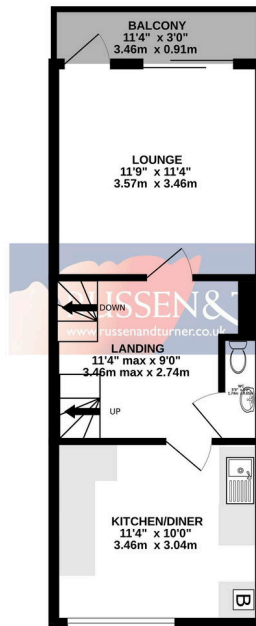
Key Features

- Maisonette
- 3 Storey
- parking (via permit)
- No chain
- Well-presented
- 2 Double bedrooms
- Views across town
- Balcony
- Gas central heating
- Walking distance of town centre

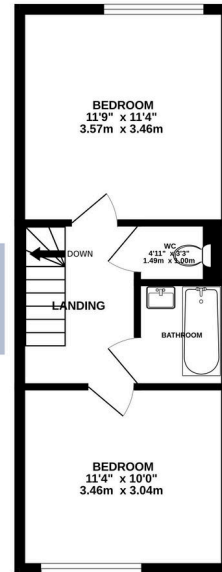
2ND FLOOR
48 sq.ft. (4.5 sq.m.) approx.



3RD FLOOR
345 sq.ft. (32.1 sq.m.) approx.



TOP FLOOR
345 sq.ft. (32.1 sq.m.) approx.



TOTAL FLOOR AREA - 738 sq.ft. (68.6 sq.m.) approx.

Whilst every attempt has been made to ensure the accuracy of the floorplan contained here, measurements of doors, windows, rooms and any other items are approximate and no responsibility is taken for any error, omission or mis-statement. This plan is for illustrative purposes only and should be used as such by any prospective purchaser. The services, systems and appliances shown have not been tested and no guarantee as to their operability or efficiency can be given.
Made with Metropix ©2024

