

## 43 Russett Close, King's Lynn PE30 3HB

£235,000

🛏 3 🚗 1 🚲 1

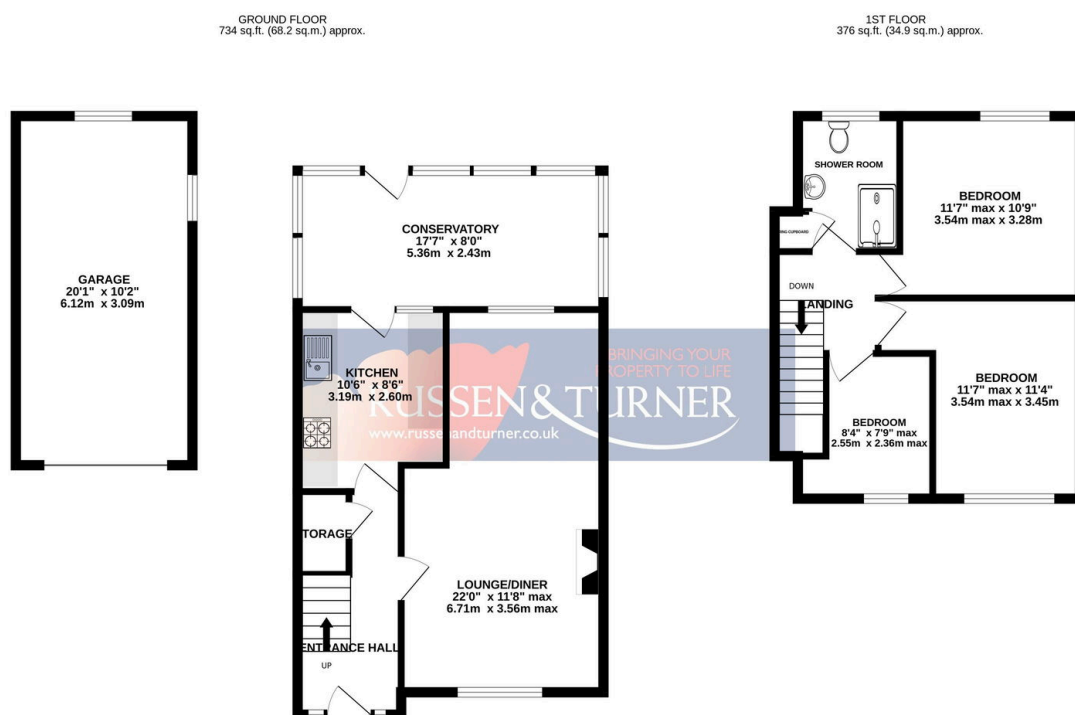


Situated on the popular Reffley development in King's Lynn, this three bedroom semi-detached home is offered with no onward chain and has been lovingly owned by the same family since new. The location is well suited to families, with local shops and schools close by. The property benefits from double glazing and gas central heating, along with a private driveway providing off-road parking and a generous 20ft garage. There are front and rear gardens, with the south-facing rear garden enjoying a sunny aspect and featuring a lawn, patio area, garden shed and two greenhouses.



## Key Features

- Family home
- 22ft Lounge / dining
- 17ft Conservatory
- No chain
- 1st Time to market
- 3 Bedrooms
- South facing garden
- 20ft Garage
- Sought after location
- Gas central heating



TOTAL FLOOR AREA : 1110 sq.ft. (103.1 sq.m.) approx.

Whilst every attempt has been made to ensure the accuracy of the floorplan contained here, measurements of doors, windows, rooms and any other items are approximate and no responsibility is taken for any error, omission or mis-statement. This plan is for illustrative purposes only and should be used as such by any prospective purchaser. The services, systems and appliances shown have not been tested and no guarantee as to their operability or efficiency can be given.

Made with Metropix ©2026

