

41 Bishops Road, King's Lynn PE30 4NS

£199,995

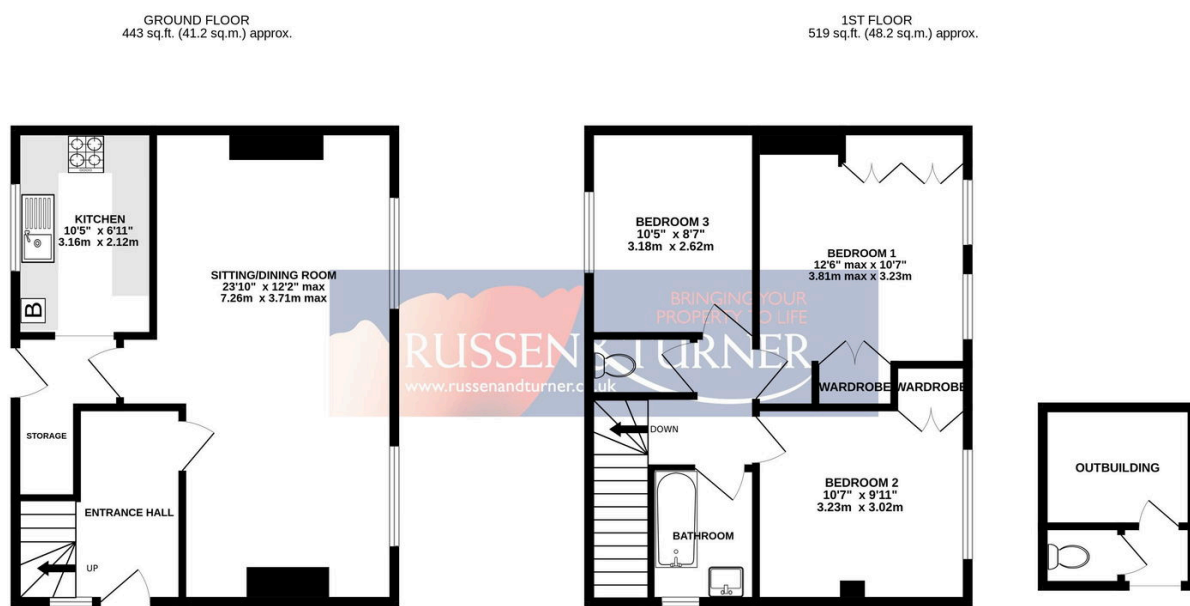
3 1 1



No Onward Chain! A fantastic first step onto the property ladder, this ideal home offers the space, location and potential first-time buyers are searching for. Bright, welcoming and full of possibility, it's the kind of place where you can move in, make memories and gradually put your own stamp on it. With a generous garden, practical extras and easy access to local amenities, this is an opportunity not to be missed, early viewing is highly recommended.

Key Features

- Semi-Detached Home
- 3 Double Bedrooms
- Ideal First Home
- Council Tax Band A
- Double Glazed
- No Onward Chain
- Gas Central Heating
- Generous, Enclosed Rear Garden
- Potential to Extend STPP
- Open Plan Living/Dining Area



TOTAL FLOOR AREA : 962 sq.ft. (89.4 sq.m.) approx.

Whilst every attempt has been made to ensure the accuracy of the floorplan contained here, measurements of doors, windows, rooms and any other items are approximate and no responsibility is taken for any error, omission or mis-statement. This plan is for illustrative purposes only and should be used as such by any prospective purchaser. The services, systems and appliances shown have not been tested and no guarantee as to their operability or efficiency can be given.
Made with Metropix ©2026