

46 Baldock Drive, King's Lynn PE30 3DQ

£279,995

🛏 2 🍷 1 🛋 1

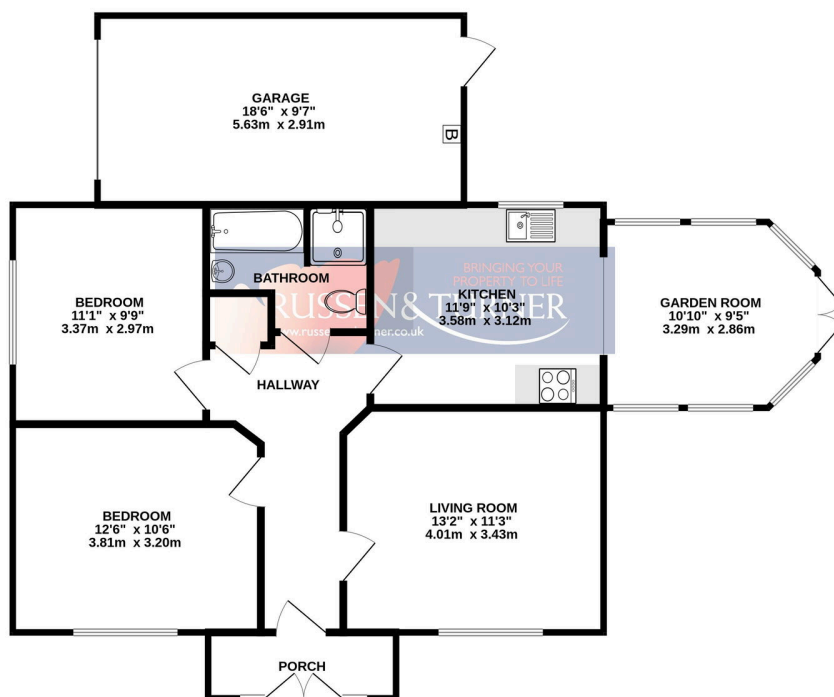


Set on the ever-popular Grange development, right on the peaceful edge of King's Lynn, this modern two-bedroom detached bungalow offers the kind of lifestyle many buyers dream of, quiet, comfortable, and wonderfully easy to live in. Whether you're looking to downsize, enjoy single-storey living, or simply move into a home that's ready for a new chapter, this bungalow is an inviting opportunity.

Key Features

- Detached Bungalow
- Popular Area
- Garage and Off-road Parking
- Bright and Airy Living Room
- Modern Kitchen
- Two Double Bedrooms
- No Onward Chain
- Private and Well Maintained Garden
- Gas Central Heating
- Corner Plot

GROUND FLOOR
944 sq.ft. (87.7 sq.m.) approx.



TOTAL FLOOR AREA: 944 sq.ft. (87.7 sq.m.) approx.

Whilst every attempt has been made to ensure the accuracy of the floorplan contained here, measurements of doors, windows, rooms and any other items are approximate and no responsibility is taken for any error, omission or mis-statement. This plan is for illustrative purposes only and should be used as such by any prospective purchaser. The services, systems and appliances shown have not been tested and no guarantee as to their operability or efficiency can be given.
Made with Metropix ©2025