

Flat 27, Three Crowns House, South Quay PE30 5DT

£99,995

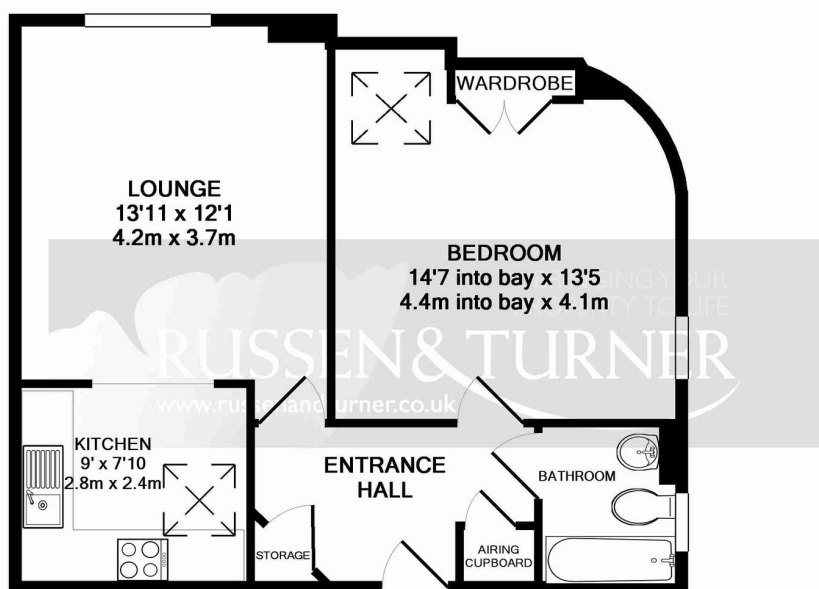
🛏 1 🚿 1 🛋 1



Enjoy peaceful living in this welcoming over-55's apartment, set on the second floor of a well-maintained development right in the heart of town. Designed for comfort and convenience, the property offers bright, well-proportioned interiors and easy access via a lift, along with inviting communal spaces and gardens that create a friendly sense of community. With shops, cafés, restaurants and cultural amenities just moments away, it provides an ideal blend of independence and connection in a superb central location. Perfect for anyone seeking a calm, low-maintenance home close to the water and all the essentials.

Key Features

- 2nd Floor apartment
- Over 55's
- Lift access
- Communal garden area
- Double glazed
- Stunning river views
- 2nd storey
- Town centre location
- Residents parking
- Communal areas



Whilst every attempt has been made to ensure the accuracy of the floor plan contained here, measurements of doors, windows, rooms and any other items are approximate and no responsibility is taken for any error, omission, or mis-statement. This plan is for illustrative purposes only and should be used as such by any prospective purchaser. The services, systems and appliances shown have not been tested and no guarantee as to their operability or efficiency can be given
Made with Metropix ©2009