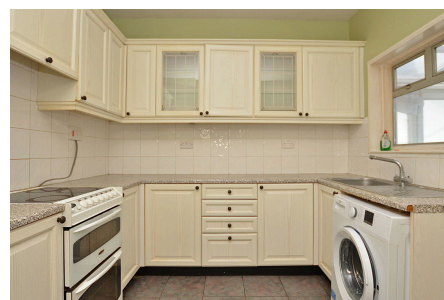


66 Cresswell Street, King's Lynn PE30 2AW

£145,000

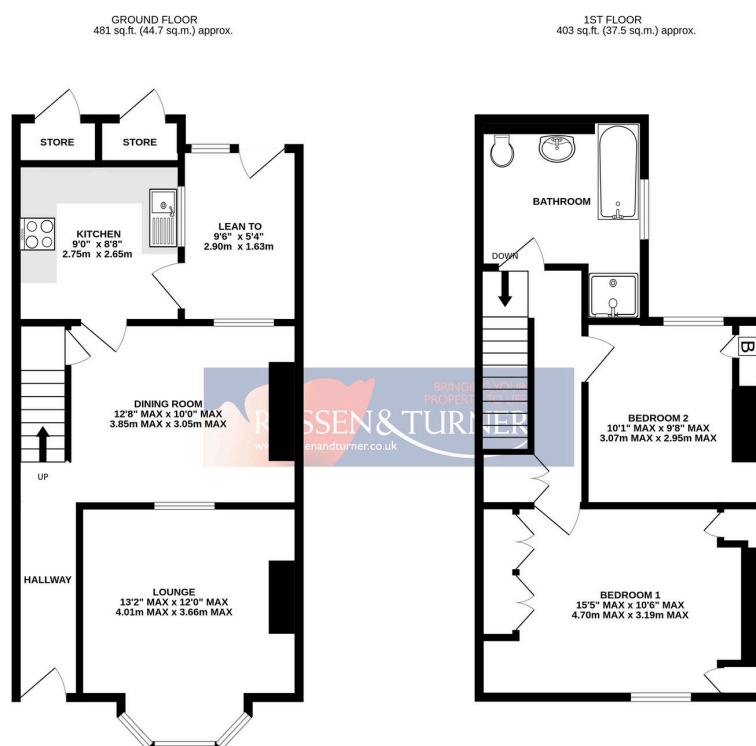
 2  1  2



No Onward Chain! Perfectly located just a short walk from the town centre and train station, this two bedroom mid-terraced home presents a wonderful opportunity for first-time buyers or astute investors. A superb blank canvas, ready for you to make your own.

Key Features

- Terraced house
- No onward chain
- Gas central heating
- Potential investment opportunity
- Council tax band A
- Two bedrooms
- Ideal first home
- Close to town centre & train station
- Two reception rooms
- Rear courtyard garden



TOTAL FLOOR AREA: 884 sq. ft. (82.1 sq.m.) approx.
Whilst every attempt has been made to ensure the accuracy of the floorplans contained herein, measurements of doors, windows, rooms and any other items are approximate and no responsibility is taken for any error, omission or mis-statement. This plan is for illustrative purposes only and should be used as such by any prospective purchaser. The services, systems and appliances shown have not been tested and no guarantee as to their operability or efficiency can be given.
Made with Metropix 12/25