

## 34 Deas Road, South Wootton PE30 3PE

£235,000

 3  2  1

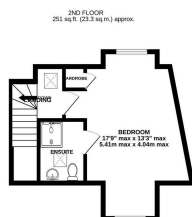
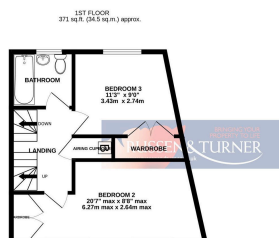
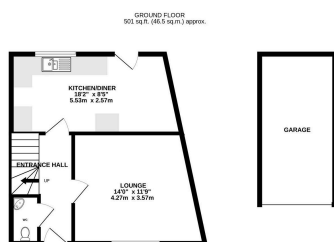


**NO ONWARD CHAIN** – tucked away in the heart of South Wootton, this spacious three-storey home invites you in with warmth and light. Picture cosy evenings in the bright lounge, lively dinners in the kitchen/diner, and lazy weekend mornings in your top-floor master suite. With three double bedrooms, there's plenty of room for family or guests. Step outside to a sunny, south-facing garden, perfect for quiet coffees or summer BBQs. A garage and off-road parking add ease to everyday life. Nearby to excellent schools, shops, and transport links, this home blends village charm with modern convenience. Best of all, with no onward chain, your next chapter could start sooner than you think. Come and see where your story begins.



## Key Features

- Townhouse
- No onward chain
- Garage
- New boiler (2024)
- South facing garden
- 3 Bedrooms
- Kitchen / dining
- Desirable location
- Ensuite
- Ground floor W.C.



TOTAL FLOOR AREA - 1123 sq ft (104.3 sq m) approx.

Whilst every attempt has been made to ensure the accuracy of the floorplan contained herein, measurements of doors, windows, rooms and any other items are approximate and no responsibility is taken for any error, omission or mis-statement. This plan is for illustrative purposes only and should be used as such for any prospective purchases. The services, systems and appliances shown have not been tested and no guarantee as to their operability or efficiency can be given.  
Made with Metrepxt (2025)

