

1 Holcombe Avenue, King's Lynn PE30 5NX

£210,000

 3  2  2



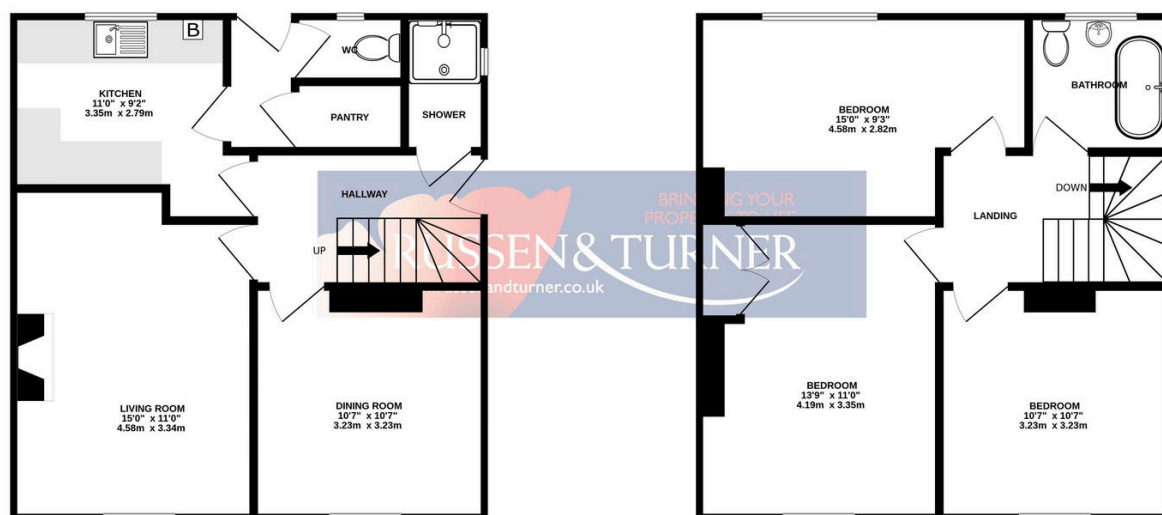
NO ONWARD CHAIN - Tucked away on a generous corner plot, this charming three-bedroom semi-detached home is brimming with potential and ready for you to make it your own.

Key Features

- Semi-Detached House
- Sought After Location
- Generous Corner Plot
- Walking Distance to Walks Park, Tarin Station and Town Centre
- Off-road Parking
- Three Double Bedrooms
- No Onward Chain
- Potential to Extend (STPP)
- Gas Central Heating
- Make This Home Your Own

GROUND FLOOR
481 sq.ft. (44.7 sq.m.) approx.

1ST FLOOR
482 sq.ft. (44.8 sq.m.) approx.



TOTAL FLOOR AREA : 963 sq.ft. (89.4 sq.m.) approx.

Whilst every attempt has been made to ensure the accuracy of the floorplan contained here, measurements of doors, windows, rooms and any other items are approximate and no responsibility is taken for any error, omission or mis-statement. This plan is for illustrative purposes only and should be used as such by any prospective purchaser. The services, systems and appliances shown have not been tested and no guarantee as to their operability or efficiency can be given.
Made with Metropix ©2025