

7 Carmelite Terrace, King's Lynn PE30 5AF

£185,000

🛏 2 🚿 1 🛋 1



Gingerbread Charm by the Quay

Just a short stroll from King's Lynn's buzzing quayside, this gorgeous Carrstone terraced home is full of character and cool vibes. Inside you'll find a cosy lounge with open fire, a bright kitchen/diner, handy utility and W.C., plus two lovely double bedrooms and a fab four-piece bathroom.

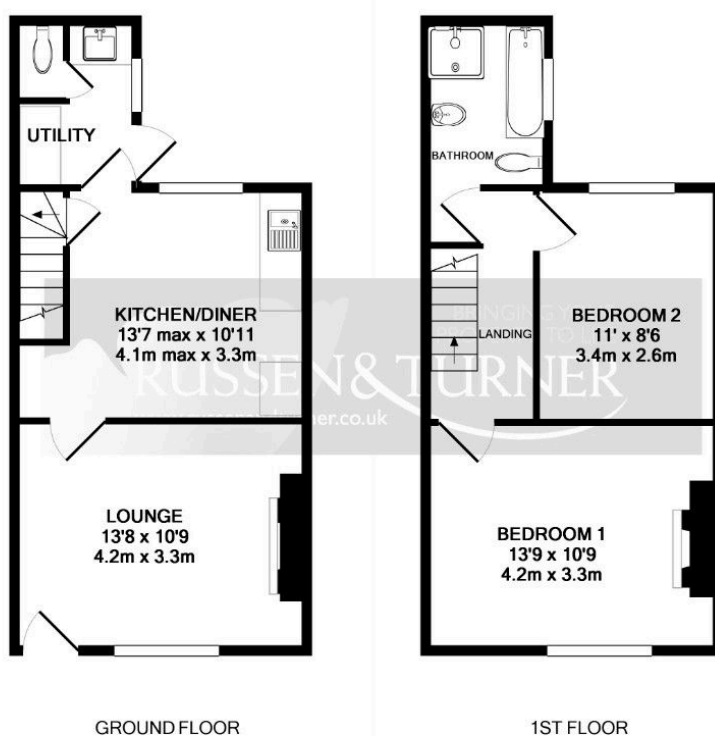
Outside? A sunny south-facing courtyard and private gated parking.

A charming home in a brilliant spot, ready to fall in love with.



Key Features

- Gingerbread cottage
- Kitchen / dining room
- Ground floor W.C.
- Open fireplace
- Private parking
- 2 Double bedrooms
- Utility
- Close to town centre
- Character with a cool vibe
- Conservation area



Whilst every attempt has been made to ensure the accuracy of the floor plan contained here, measurements of doors, windows, rooms and any other items are approximate and no responsibility is taken for any error, omission, or mis-statement. This plan is for illustrative purposes only and should be used as such by any prospective purchaser. The services, systems and appliances shown have not been tested and no guarantee as to their operability or efficiency can be given.
Made with Metropix ©2014