

89 Middlewood, King's Lynn PE30 4RU

£185,000

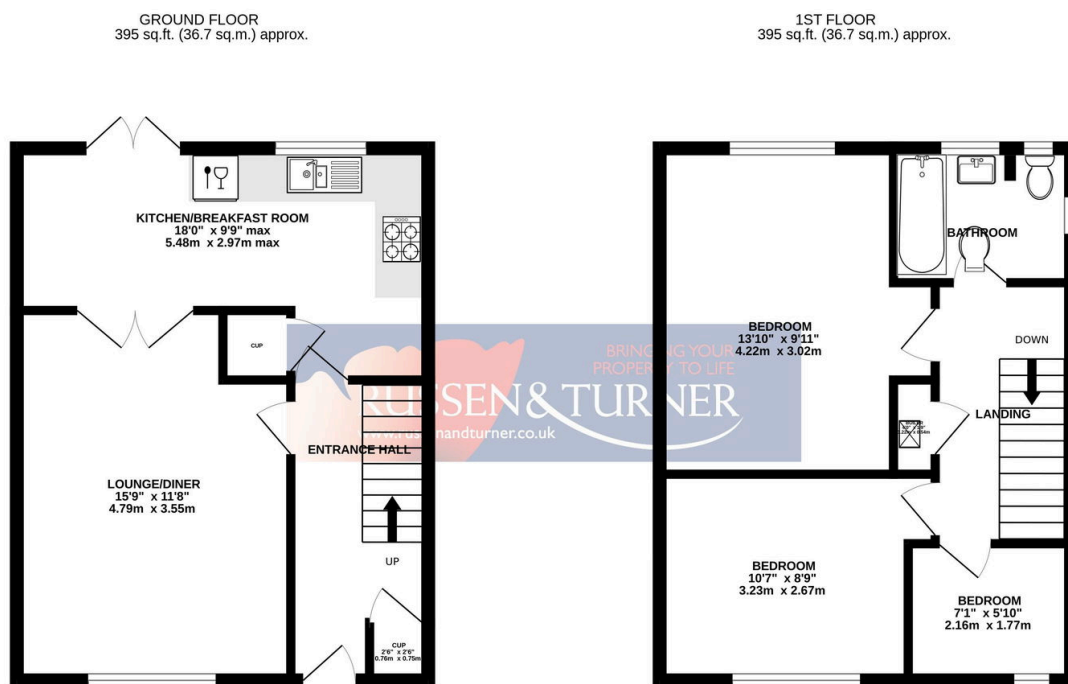
 3  1  1



Russen & Turner are pleased to offer this superbly updated three-bedroom end-terrace home, set in a popular location close to the Queen Elizabeth Hospital in King's Lynn. Stylishly improved throughout, the property is perfect for families, first-time buyers or investors, offering a modern interior, practical layout and easy-to-maintain outdoor space. Call now and book a viewing.

Key Features

- Terraced home
- Kitchen dining room
- Close to QE Hospital
- Gas central heating
- Low maintenance garden
- 3 Bedrooms
- Much improved by current owners
- Modern bathroom
- Double glazed
- Ideal family home



TOTAL FLOOR AREA: 790 sq.ft. (73.4 sq.m.) approx.

Whilst every attempt has been made to ensure the accuracy of the floorplan contained here, measurements of doors, windows, rooms and any other items are approximate and no responsibility is taken for any error, omission or mis-statement. This plan is for illustrative purposes only and should be used as such by any prospective purchaser. The services, systems and appliances shown have not been tested and no guarantee as to their operability or efficiency can be given.

Made with Metropix 62025