

## 3 Cresswell Street, King's Lynn PE30 2AW

£139,995

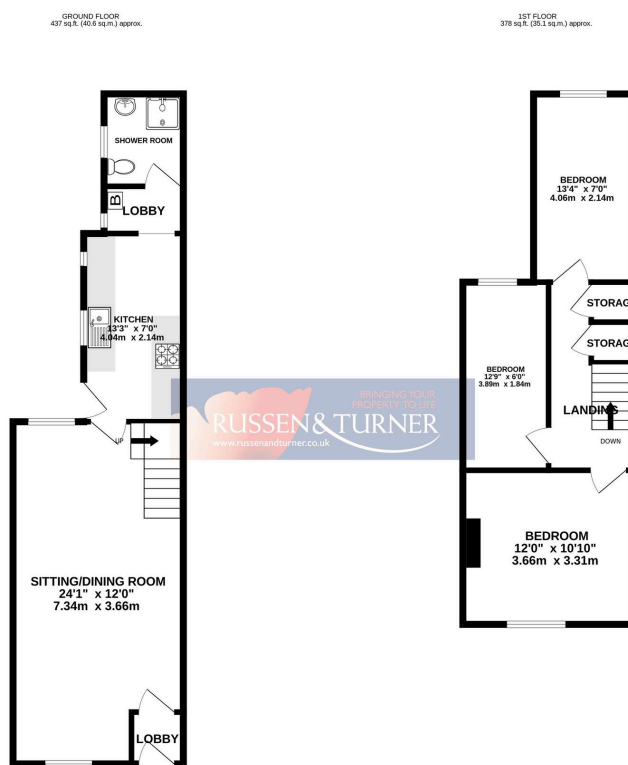
🛏 3 🚿 1 🚗 1



If you're seeking a solid addition to your property portfolio, this well-maintained terraced home in King's Lynn presents an excellent opportunity. Already let agreed, and offered to the market with no onward chain, it's perfectly suited for investors looking for a straightforward, income-generating purchase. With reliable rental potential, spacious accommodation, and a central location, this property is ideal for those wanting to secure a ready-made buy-to-let investment without the usual delays or complications.

## Key Features

- Terraced house
- 24ft Lounge
- Seeking investors
- Double glazing
- No chain
- 3 Bedrooms
- Currently tenanted by a family
- Gas central heating
- Close to town centre
- Rear courtyard



TOTAL FLOOR AREA: 815 sq ft. (75.7 sq.m.) approx.

Whilst every attempt has been made to ensure the accuracy of the description contained here, measurements of doors, windows, rooms and any other items are approximate and no responsibility is taken for any error, omission or misstatement. This plan is for illustrative purposes only and should be used as such by any prospective purchaser. The services, systems and appliances shown have not been tested and no guarantee as to their operability or efficiency can be given.

Made with Metropix ©2025