

46 Windsor Road, King's Lynn PE30 5PL

£210,000

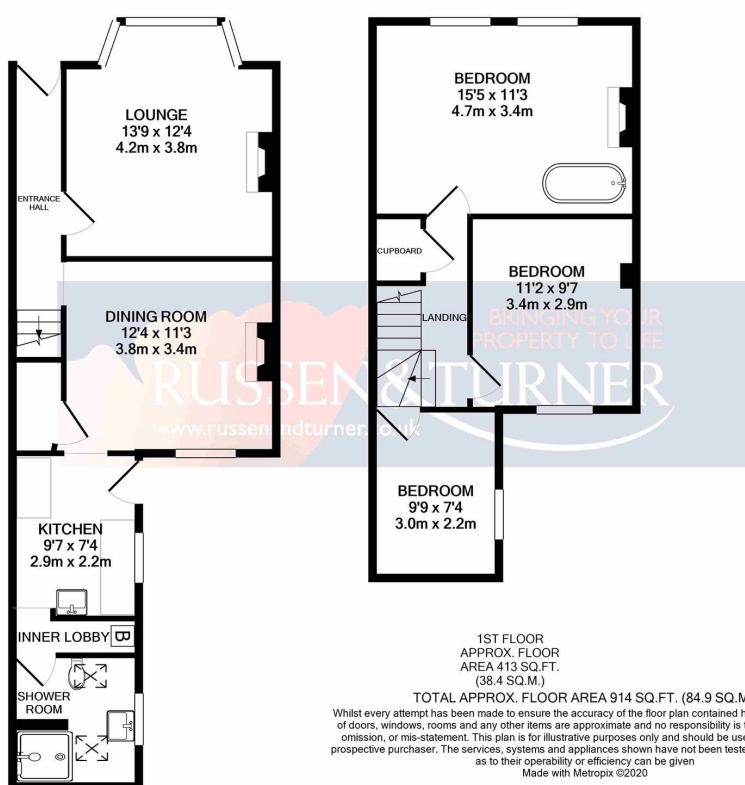
🛏 3 🚿 1 🛋 2



Tucked away in a charming conservation area just a short stroll from The Walks, this stylish three-bedroom period home blends timeless character with a cool, contemporary edge. With original features, modern touches, and a prime location close to the town centre and station, it's the perfect mix of convenience and charm. Inside, you'll find two welcoming reception rooms, a sleek shower room, and a standout master bedroom complete with its own bath. It's a home that invites you to relax, unwind, and enjoy town living with a twist of period flair.

Key Features

- Period Home
- 2 Reception rooms
- Modern flair
- Close to The Walks
- Private courtyard
- 3 Bedrooms
- Period features
- Conservation area
- Walking distance of town
- Cool presentation



GROUND FLOOR
APPROX. FLOOR
AREA 500 SQ.FT.
(46.5 SQ.M.)