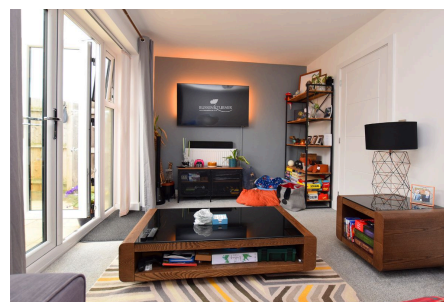


20 Greenpark Avenue, King's Lynn, PE30 2NB

£220,000

 2  2  0

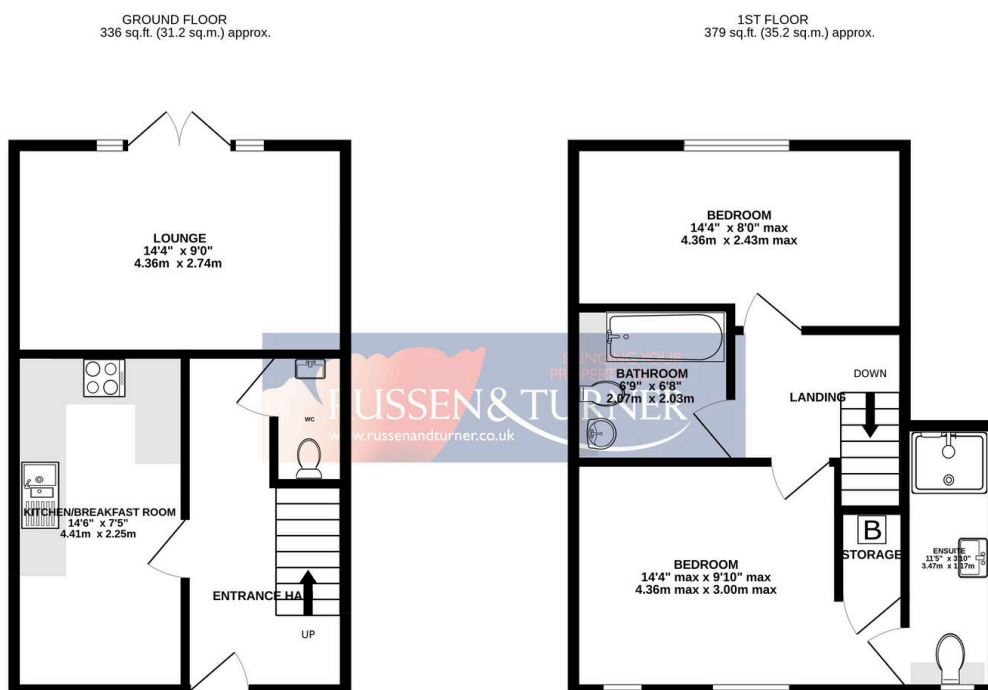


Welcome to your next happy place! Whether you're stepping onto the property ladder for the first time, looking for a stylish space to call your own, or searching for a brilliant investment, this delightful home in King's Lynn could be just the one. Full of character, convenience and a little bit of everyday magic, it's got that 'this feels right' kind of charm the moment you walk through the door.



Key Features

- Modern décor
- Cul-de-sac
- Close to amenities
- 2 Allocated parking spaces
- East facing garden
- Kitchen / breakfast room
- Ground floor W.C.
- Ensuite shower room
- 2 Double bedrooms
- Modern house



TOTAL FLOOR AREA : 715 sq.ft. (66.4 sq.m.) approx.

Whilst every attempt has been made to ensure the accuracy of the floorplan contained here, measurements of doors, windows, rooms and any other items are approximate and no responsibility is taken for any error, omission or mis-statement. This plan is for illustrative purposes only and should be used as such by any prospective purchaser. The services, systems and appliances shown have not been tested and no guarantee as to their operability or efficiency can be given.

Made with Metropix ©2025

