

## The Maples, Bardolphs Way, Wormegay PE33 0SF

£585,000

 5  4  3

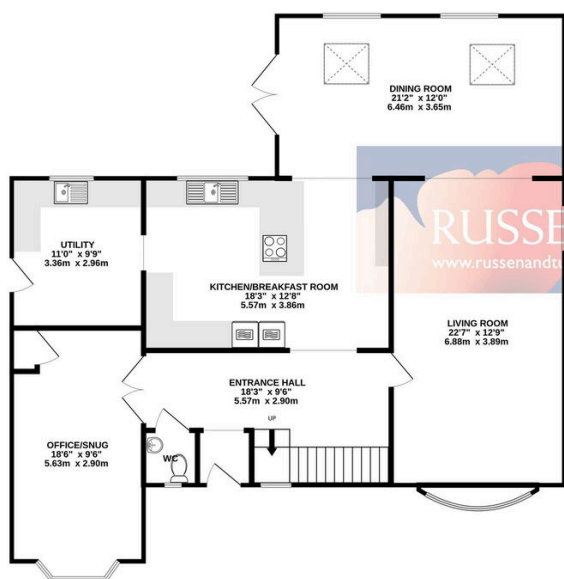


Tucked away in the heart of the Norfolk countryside, this stunning five-bedroom detached residence is a masterclass in elegance, space, and refined country living. This exceptional home is more than just a place to live—it's a lifestyle. A rare opportunity to own a residence that perfectly balances luxury, space, and tranquility.

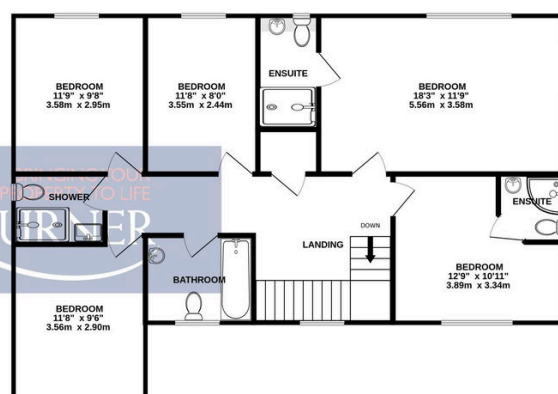
## Key Features

- Substantial Detached House
- Five Double Bedrooms
- Wealth of Accommodation - Over 2000 sqft
- Stunning Home - Exquisite Finish
- Generous Driveway
- Beautiful Rear Garden with Breathtaking Countryside Views
- No Onward Chain
- Four Bathrooms - Including Two En-suites
- Versatile Home - Three Reception Rooms
- Wonderful Country Style Kitchen/Breakfast Room

GROUND FLOOR  
1255 sq.ft. (116.6 sq.m.) approx.



1ST FLOOR  
976 sq.ft. (90.6 sq.m.) approx.



TOTAL FLOOR AREA : 2230 sq.ft. (207.2 sq.m.) approx.

Whilst every attempt has been made to ensure the accuracy of the floorplan contained here, measurements of doors, windows, rooms and any other items are approximate and no responsibility is taken for any error, omission or mis-statement. This plan is for illustrative purposes only and should be used as such by any prospective purchaser. The services, systems and appliances shown have not been tested and no guarantee as to their operability or efficiency can be given.  
Made with Metropix ©2025