


**11 Howards Way, Gayton PE32 1WJ**

**£499,995**

 4  2  2



Welcome to a thoughtfully designed collection of characterful homes in the heart of Gayton, a friendly Norfolk village surrounded by beautiful countryside. Built by a trusted local developer, each property offers a unique design, combining quality craftsmanship with modern, energy-efficient living. A limited number of fully serviced plots are also available, giving buyers the chance to work alongside the builder for a more bespoke finish. With spacious layouts, premium features, and a welcoming community feel, this is a rare opportunity to own a truly individual home in a special location.

**NOTE: All Photos are example pictures taken of some of the completed homes to show the finish quality and some of the designs available.**

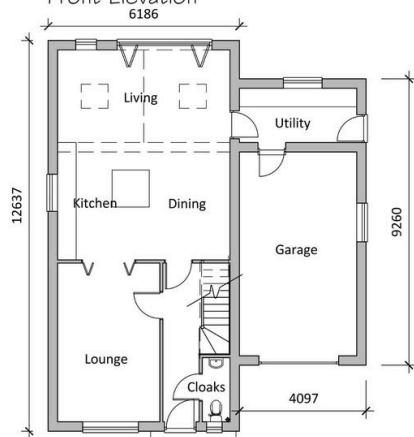
## Key Features

- Brand New Home
- High end finish
- Choice of design
- Large garage
- Local builder
- Executive design
- Desirable village
- Opportunity to work with builder
- Character design
- Call R&T to arrange a meeting with the builder

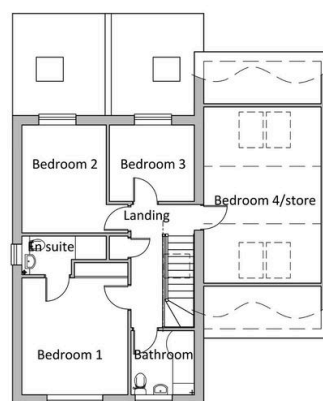
HOUSE TYPE 3A - PLOTS 12,15,18,20 & 28



Front Elevation



Ground Floor Layout



First Floor Layout

