


## 2 Bevis Way, King's Lynn PE30 3AG

£299,995

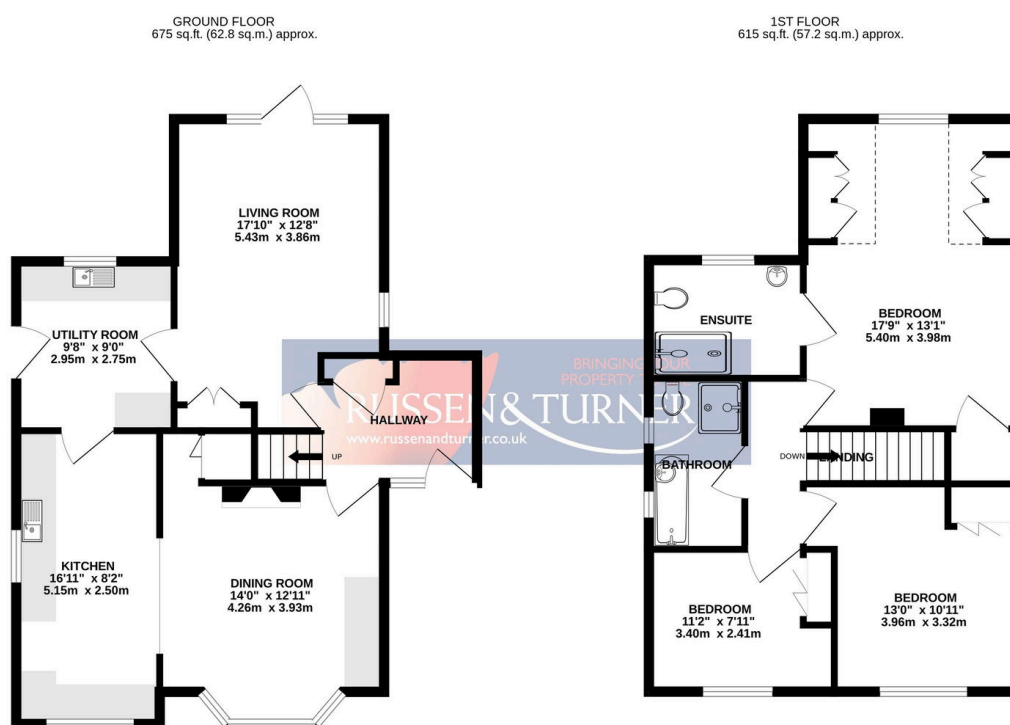
 3  2  2



**WONDERFUL HOME!!** Tucked away just off the ever-popular Wootton Road, this stunning three-bedroom detached home is designed for modern living. With generous room proportions, stylish interiors, off-road parking, and a private rear garden, it's a home that truly ticks all the boxes.

## Key Features

- Detached House
- Generous Rear Garden
- Stunning Presentation - Move in Ready
- Gas Central Heating
- En-suite to Main Bedroom
- Three Well Proportioned Bedrooms
- Sought After Location - Just Off Wootton Road
- Open Plan Kitchen/Dining Room - Ideal For Modern Life
- Off-road Parking
- Handy Utility Room



TOTAL FLOOR AREA: 1291 sq.ft. (119.9 sq.m.) approx.

Whilst every attempt has been made to ensure the accuracy of the floorplan contained here, measurements of doors, windows, rooms and any other items are approximate and no responsibility is taken for any error, omission or mis-statement. This plan is for illustrative purposes only and should be used as such by any prospective purchaser. The services, systems and appliances shown have not been tested and no guarantee as to their operability or efficiency can be given.  
Made with Metropix ©2025