

8 Briar Close, Grimston PE32 1XD

£279,995

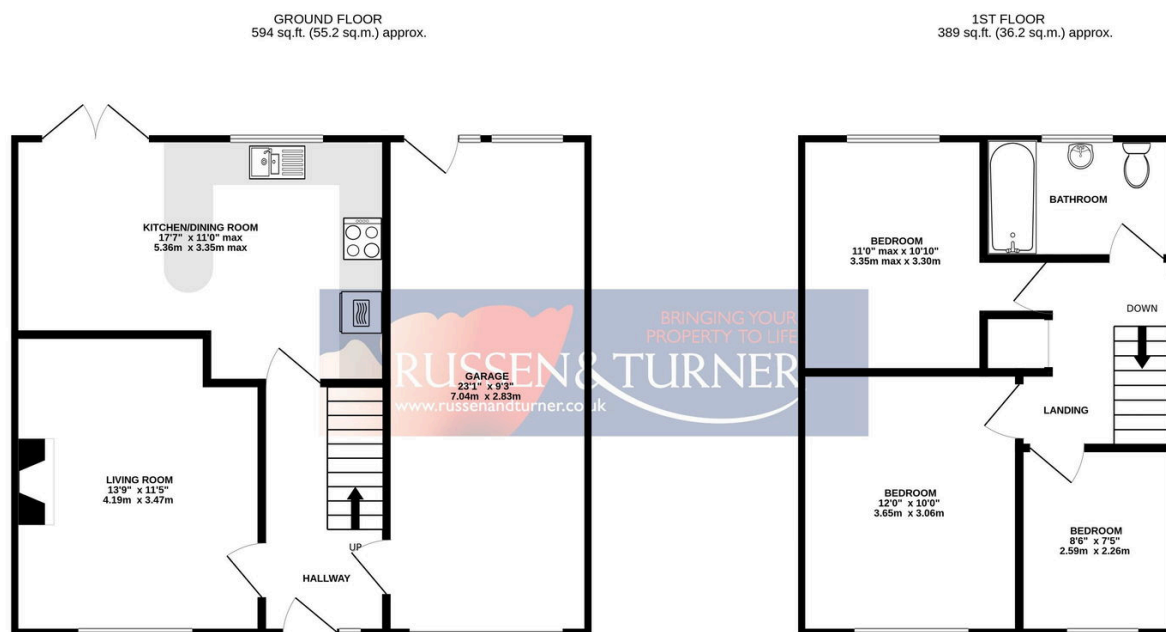
 3  1  2



Set within a cul-de-sac in the highly desirable, Norfolk village of Grimston, this stunning, three bedroom end of terrace home effortlessly combines bright and airy, comfortable accommodation and a private garden along with ample parking, an integral garage and the charm of living in a rural Norfolk village.

Key Features

- End of Terrace House
- Sought After Village Setting
- Ample Off-road Parking
- Modern and Stylish Kitchen and Dining Room
- 23ft Integral Garage
- Three Bedrooms
- Private Rear Garden
- Cosy Living Room with Woodburning Stove
- Oil Fired Central Heating
- Potential to add more Accommodation



TOTAL FLOOR AREA : 983 sq.ft. (91.3 sq.m.) approx.

Whilst every attempt has been made to ensure the accuracy of the floorplan contained here, measurements of doors, windows, rooms and any other items are approximate and no responsibility is taken for any error, omission or mis-statement. This plan is for illustrative purposes only and should be used as such by any prospective purchaser. The services, systems and appliances shown have not been tested and no guarantee as to their operability or efficiency can be given.
Made with Metropix ©2025