

3 Graham Drive, Middleton PE32 1RL

£315,000

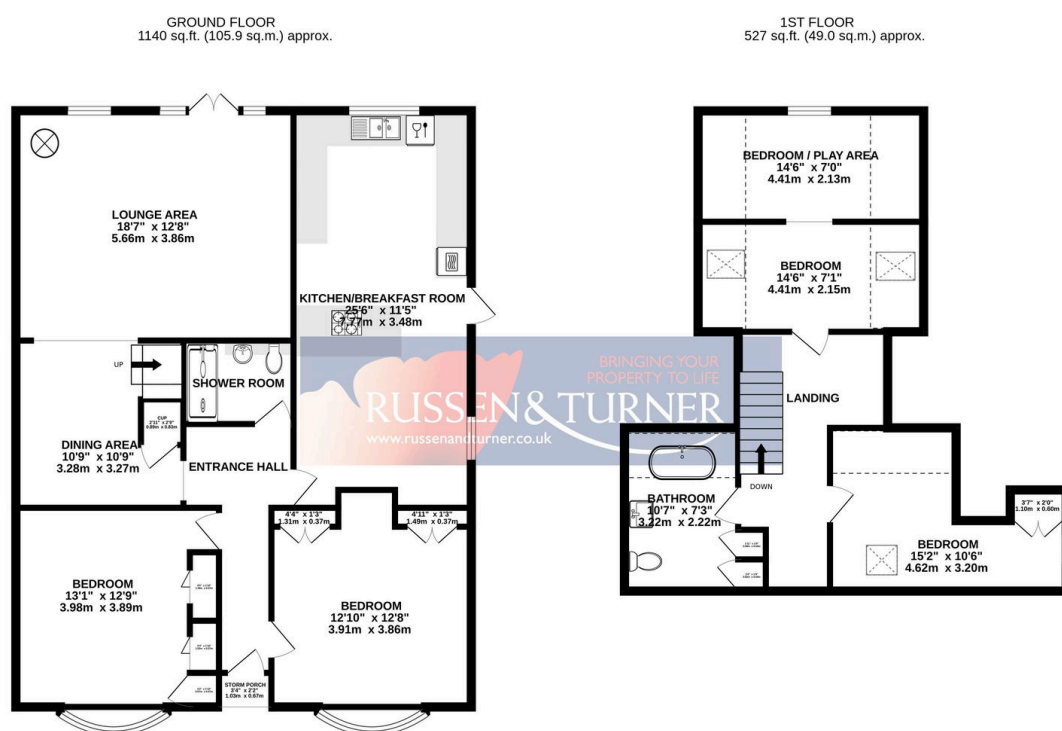
🛏 4 🚗 2 🛋 2



This beautifully presented four-bedroom detached chalet bungalow offers a versatile layout with spacious living areas. The large open-plan lounge and dining room features a cosy wood-burning stove, flowing into a well-appointed kitchen/breakfast room. With two ground-floor bedrooms (which can also be used as reception rooms), a shower room, and two first-floor bedrooms—one cleverly divided into two spaces—plus a family bathroom, private garden, carport, and off-road parking, this charming home is perfect for flexible family living.

Key Features

- Detached chalet
- 4 Bedrooms
- 2 Bathrooms
- Parking
- 25ft6 Kitchen / breakfast room
- Versatile accommodation
- 2 Receptions
- Wood burning stove
- Cul-de-sac
- Solar panels



TOTAL FLOOR AREA: 1667 sq.ft. (154.9 sq.m.) approx.

Whilst every attempt has been made to ensure the accuracy of the floorplan contained here, measurements of doors, windows, rooms and any other items are approximate and no responsibility is taken for any error, omission or mis-statement. This plan is for illustrative purposes only and should be used as such by any prospective purchaser. The services, systems and appliances shown have not been tested and no guarantee as to their operability or efficiency can be given.

Made with Metropix ©2025