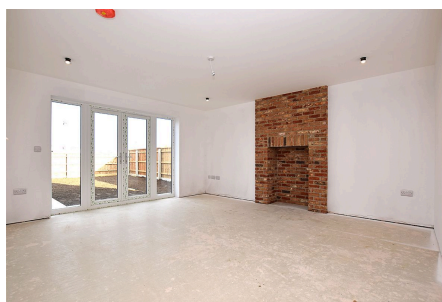


13 Howards Way, Gayton King's Lynn PE32 1WJ

£595,000

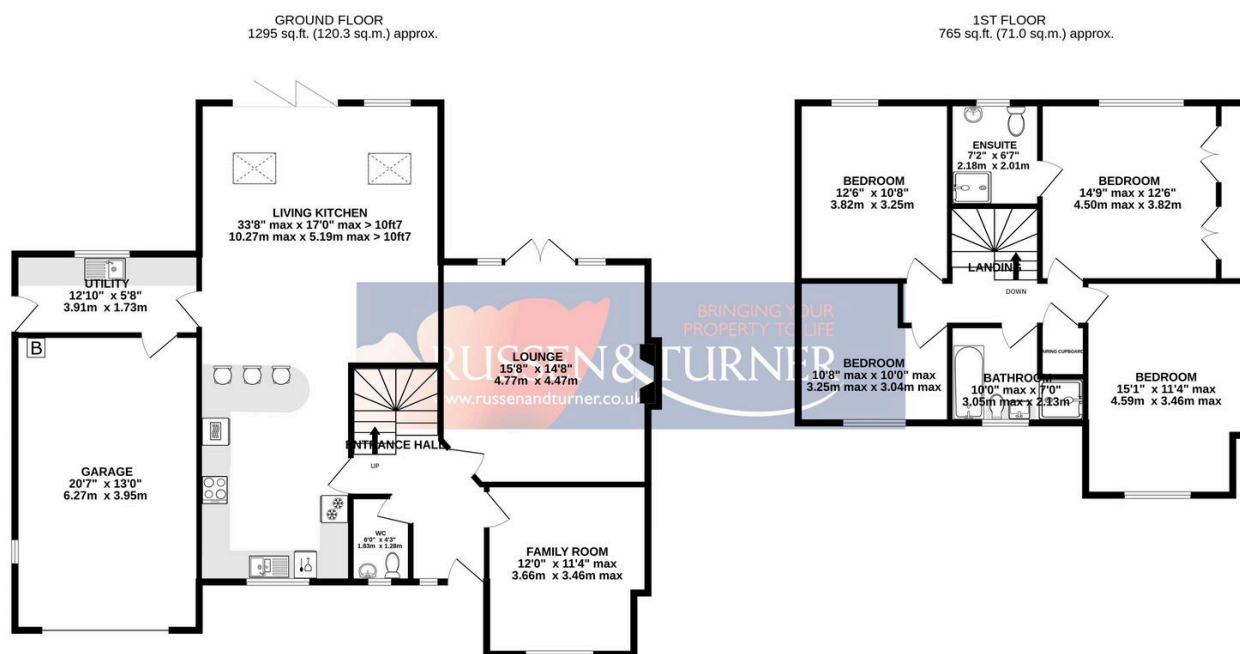
 4  2  3



This stunning four-bedroom detached home, built to an exceptional standard with a 10-year guarantee, features a 33ft 8in vaulted kitchen/family room with bi-fold doors, air source heating with underfloor heating on the ground floor, and radiators upstairs. Complete with a landscaped garden, garage, and high-quality finishes throughout, this energy-efficient property offers modern luxury in a desirable village location.

Key Features

- Brand new home
- Quality finish from local builder
- Large garage
- 33ft8 'Living-Kitchen'
- Striking hallway
- 4 Double bedrooms
- Principal bedroom with ensuite
- Air-source heating
- Well-appointed kitchen
- Desirable village



TOTAL FLOOR AREA : 2059 sq.ft. (191.3 sq.m.) approx.

Whilst every attempt has been made to ensure the accuracy of the floorplan contained here, measurements of doors, windows, rooms and any other items are approximate and no responsibility is taken for any error, omission or mis-statement. This plan is for illustrative purposes only and should be used as such by any prospective purchaser. The services, systems and appliances shown have not been tested and no guarantee as to their operability or efficiency can be given.

Made with Metropix ©2025