


8a Jermyn Road, King's Lynn PE30 4AD

Offers Over £390,000

 3  2  2



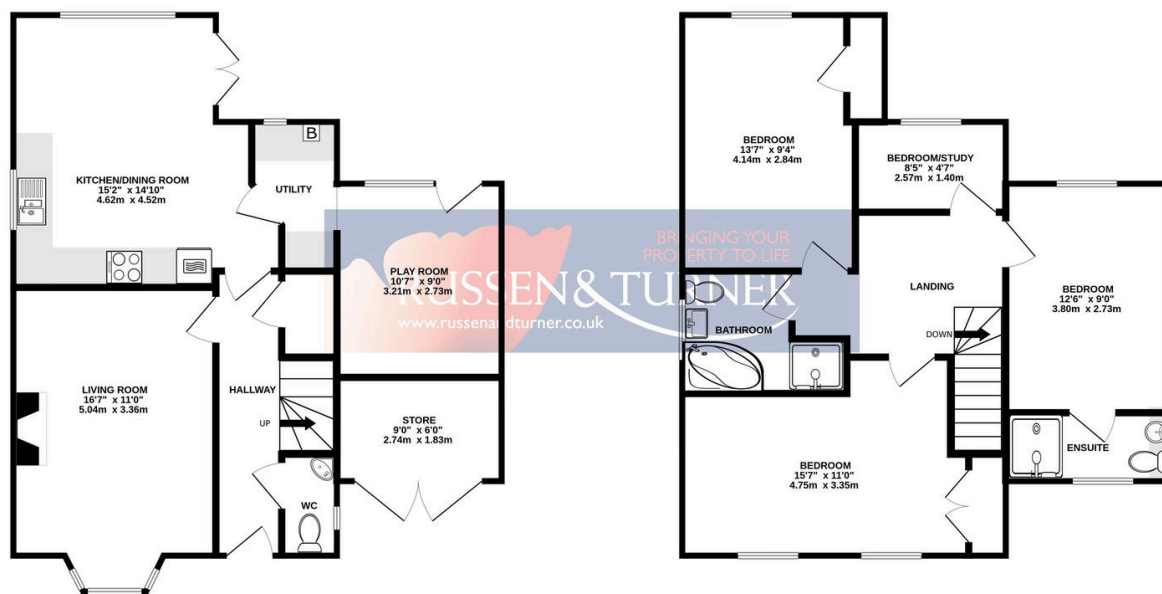
SOUTH FACING GARDEN! Built in 2013 and thoughtfully extended since, this impressive four-bedroom detached home on Jermyn Road combines contemporary design with practical family living. Perfectly situated close to the Queen Elizabeth Hospital and the highly regarded Springwood High School, it offers the ideal balance of modern comfort, convenience, and style.

Key Features

- Detached House
- Beautiful Contemporary Style
- Stunning South Facing Garden
- Recently Extended - Superb Accommodation
- Take a Look at the Walkthrough Video
- Three Substantial Bedrooms
- Study/Dressing Room or Potential Fourth Bedroom
- Sought After Location - Close to Springwood High School and Hospital
- Ample Off-road Parking
- Two Reception Rooms plus Kitchen/Dining Room

GROUND FLOOR
627 sq.ft. (58.2 sq.m.) approx.

1ST FLOOR
625 sq.ft. (58.0 sq.m.) approx.



TOTAL FLOOR AREA : 1252 sq.ft. (116.3 sq.m.) approx.

Whilst every attempt has been made to ensure the accuracy of the floorplan contained here, measurements of doors, windows, rooms and any other items are approximate and no responsibility is taken for any error, omission or mis-statement. This plan is for illustrative purposes only and should be used as such by any prospective purchaser. The services, systems and appliances shown have not been tested and no guarantee as to their operability or efficiency can be given.

Made with Metropix ©2025