


8a Jermyn Road, King's Lynn PE30 4AD

Offers Over £400,000

 4  2  2



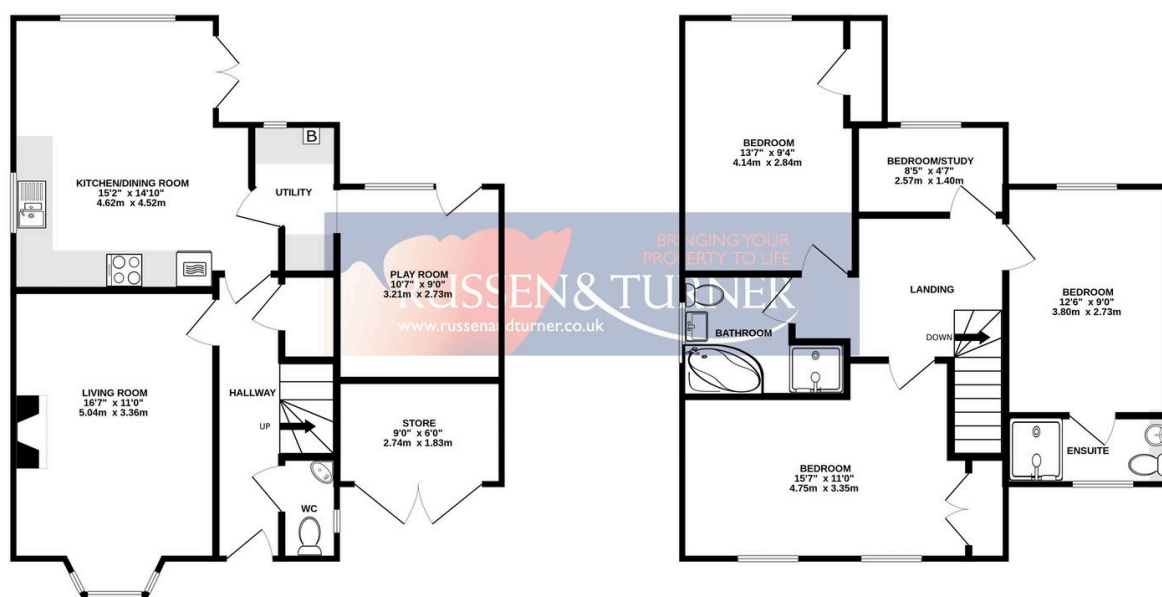
SOUTH FACING GARDEN! Recently extended and showcasing a beautiful, contemporary style, this fantastic, detached home is the perfect example of a modern home. In one of the most sought after parts of King's Lynn and West Norfolk the home boasts a wealth of stunning accommodation, plus ample parking and a wonderful south facing rear garden.

Key Features

- Detached House
- Beautiful Contemporary Style
- Stunning South Facing Garden
- Recently Extended - Superb Accommodation
- Take a Look at the Walkthrough Video
- Four Bedrooms
- Move in Ready
- Sought After Location - Close to Springwood High School and Hospital
- Ample Off-road Parking
- Two Reception Rooms plus Kitchen/ Dining Room

GROUND FLOOR
627 sq.ft. (58.2 sq.m.) approx.

1ST FLOOR
625 sq.ft. (58.0 sq.m.) approx.



TOTAL FLOOR AREA : 1252 sq.ft. (116.3 sq.m.) approx.

Whilst every attempt has been made to ensure the accuracy of the floorplan contained here, measurements of doors, windows, rooms and any other items are approximate and no responsibility is taken for any error, omission or mis-statement. This plan is for illustrative purposes only and should be used as such by any prospective purchaser. The services, systems and appliances shown have not been tested and no guarantee as to their operability or efficiency can be given.
Made with Metropix ©2025