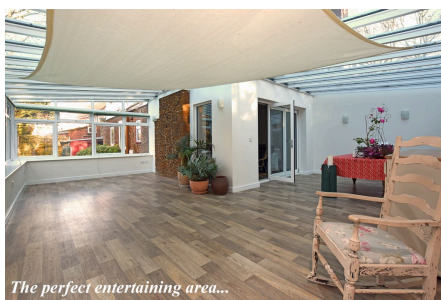


47 Castle Rising Road, South Wootton PE30 3JA

£595,000

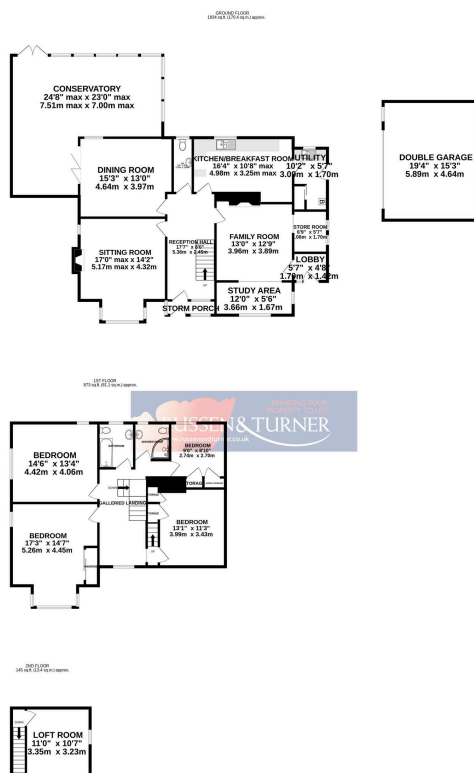
 5  2  3



Located in one of the most desirable roads in the area sits this fabulous, Edwardian, family home. With parking for yours and your family's cars, a detached double garage and around half an acre of private garden, could this be the ultimate home for gathering family and friends?

Key Features

- Period home
- 3 Reception rooms
- Utility
- Double garage
- Approx. 1/2 an acre (sts)
- 4 Bedrooms
- Large conservatory
- Ample parking
- Bathroom & shower room
- No chain



TOTAL FLOOR AREA: 2852 sq ft (264.9 sq m) approx.

Whilst every attempt has been made to ensure the accuracy of the floorplan contained herein, measurements of doors, windows, rooms and any other items are approximate and no responsibility is taken for any error, omission or mis-statement. This plan is for illustrative purposes only and should be used as such by any prospective purchaser. The services, systems and appliances shown have not been tested and no guarantee as to their operability or efficiency can be given.
Made with Metropix (2024)

