

## 12 South Green, Terrington St Clement PE34 4JS

£285,000

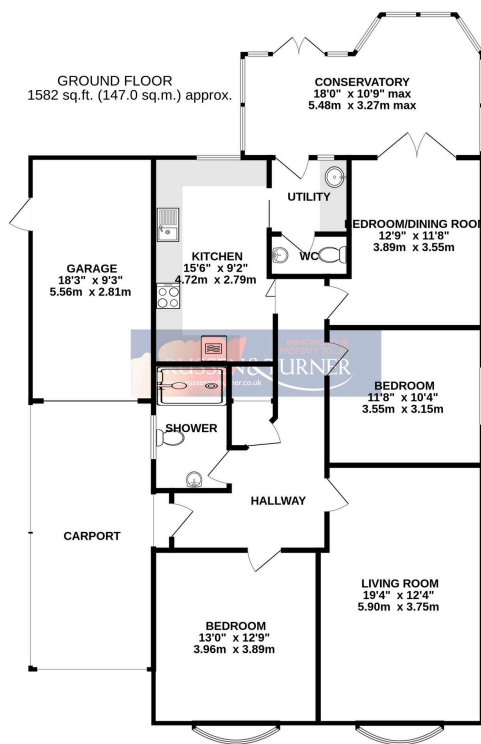
 3  1  1



Tucked out of the way, at the bottom of a cul-de-sac, this beautifully maintained and generously proportioned bungalow offers the perfect blend of country living and the convenience of having amenities close by. It's versatile accommodation, private garden and wealth of parking make it a wonderful all-round property.

## Key Features

- Detached Bungalow
- Popular Village Setting
- Private Rear Garden
- Modern Kitchen/Breakfast Room
- Versatile Accommodation
- Three Superb Double Bedrooms
- Oil Fired Central Heating
- Generous 19ft Living Room
- Garage, Carport and Off-road Parking
- Set Within Cul-de-sac



TOTAL FLOOR AREA: 1582 sq. ft. (147.0 sq. m.) approx.

Whilst every attempt has been made to ensure the accuracy of the floorplan contained here, measurements of doors, windows, rooms and any other items are approximate and no responsibility is taken for any error, omission or mis-statement. This plan is for illustrative purposes only and should be used as such by any prospective purchaser. The services, systems and appliances shown have not been tested and no guarantee as to their operability or efficiency can be given.  
Made with Metropix 12/2024