






12 Robin Hill, Heacham PE31 7SS

£495,000

 4  2  2



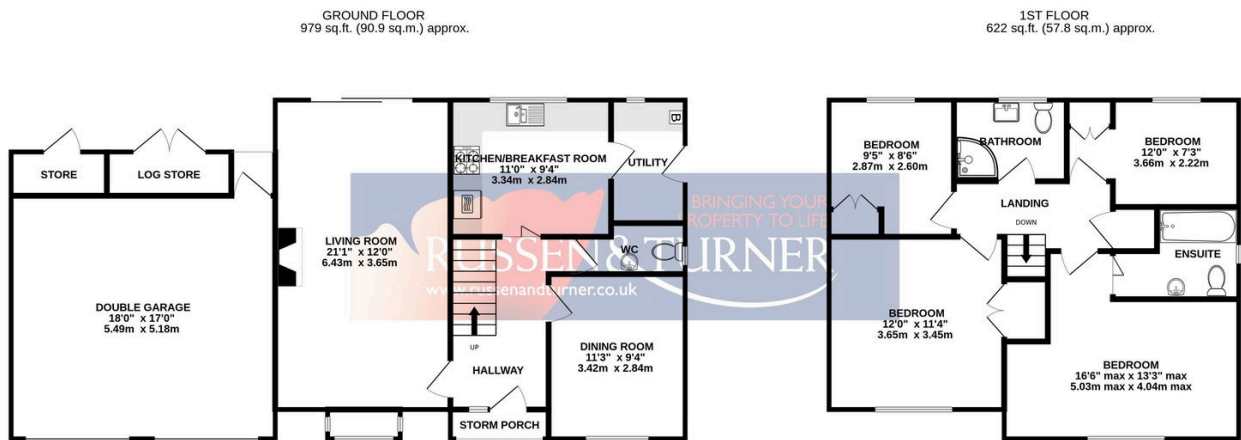
POPULAR COASTAL VILLAGE! Tucked away at the bottom of a cul-de-sac, this generously proportioned, detached home offers a wealth of space both inside and out. Within a stone's throw of the Norfolk coast this fabulous home offers everything your growing family could need.





Key Features

- Detached House
- Wealth of Versatile Accommodation
- Set within Cul-de-sac
- Close to Heacham Manor Golf Club
- Double Garage and Off-road Parking
- Four Double Bedrooms
- Sought After Coastal Village
- Generous Corner Plot
- Generous Main Bedroom with En-suite
- Perfect Family Home



TOTAL FLOOR AREA: 1601 sq.ft. (148.7 sq.m.) approx.

Whilst every attempt has been made to ensure the accuracy of the floorplan contained here, measurements of doors, windows, rooms and any other items are approximate and no responsibility is taken for any error, omission or mis-statement. This plan is for illustrative purposes only and should be used as such by any prospective purchaser. The services, systems and appliances shown have not been tested and no guarantee as to their operability or efficiency can be given.
Made with Metropix ©2024

