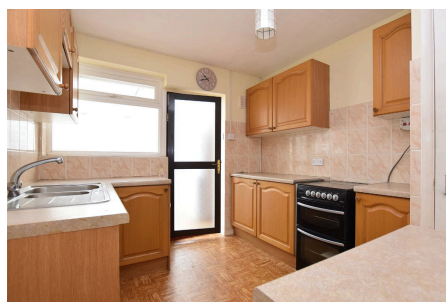


## 36 Spenser Road, King's Lynn PE30 3DP

£215,000

 3  1  1

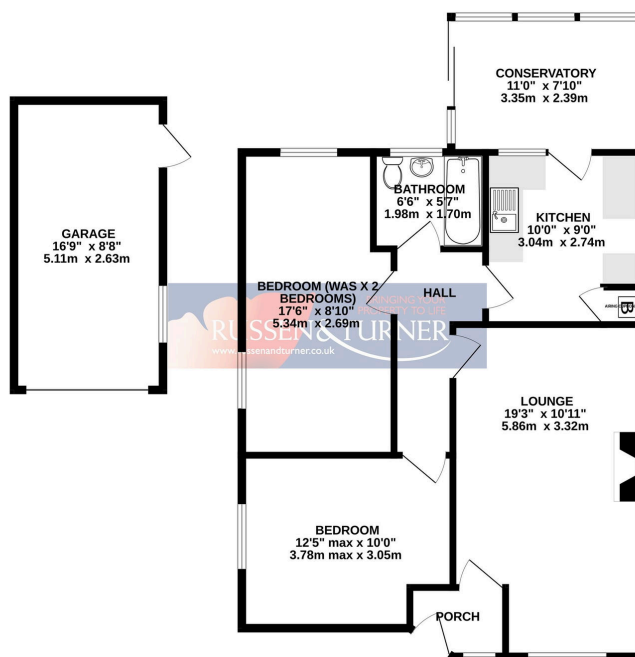


**This much loved bungalow has been in the same family for over 40 years and is now available to the market ready for the next family to enjoy. Located on the popular Grange development the property was originally built as a 3 bedroom home and could easily be returned to the same. There is ample parking and a detached garage as well as a generously sized rear garden.**

## Key Features

- Semi-detached bungalow
- 19ft Lounge
- Detached garage
- Gas central heating
- Popular location
- 2 / 3 bedrooms
- Conservatory
- Generous plot
- Double glazed
- No chain

GROUND FLOOR  
882 sq.ft. (81.9 sq.m.) approx.



TOTAL FLOOR AREA: 882 sq.ft. (81.9 sq.m.) approx.  
Whilst every attempt has been made to ensure the accuracy of the floorplan contained here, measurements of doors, windows, rooms and any other items are approximate and no responsibility is taken for any error, omission or misstatement. This plan is for illustrative purposes only and should be used as such by any prospective purchaser. The services, systems and appliances shown have not been tested and no guarantee as to their operability or efficiency can be given.  
Made with letroplan ©2024