



8 Maple Drive, South Wootton, King's Lynn, PE30 3JL

£320,000

🛏 3 🚿 1 🚗 1



Set back in a quiet cul-de-sac in the popular village of South Wootton, sits this detached, family home which offers nicely proportioned accommodation which has a ground floor W.C. and a spacious 20ft lounge which overlooks the west facing rear garden.



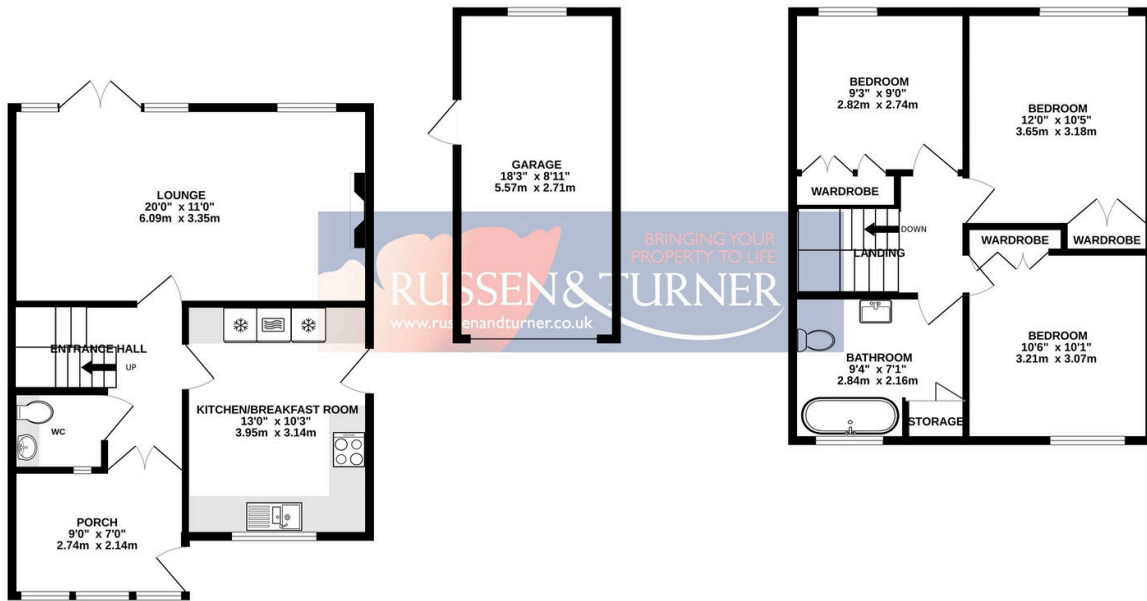


Key Features

- Detached house
- 3 Double bedrooms
- 4-piece bathroom suite
- 20ft Lounge
- Well-appointed kitchen
- Garage
- Ample parking
- Private garden
- Extended to the front
- Cul-de-sac

GROUND FLOOR
670 sq.ft. (62.2 sq.m.) approx.

1ST FLOOR
478 sq.ft. (44.4 sq.m.) approx.



TOTAL FLOOR AREA : 1148 sq.ft. (106.6 sq.m.) approx.

Whilst every attempt has been made to ensure the accuracy of the floorplan contained here, measurements of doors, windows, rooms and any other items are approximate and no responsibility is taken for any error, omission or mis-statement. This plan is for illustrative purposes only and should be used as such by any prospective purchaser. The services, systems and appliances shown have not been tested and no guarantee as to their operability or efficiency can be given.
Made with Metropix ©2024

