



10 Springfield Close, Crimlesham PE33 9EF

£395,000

4 2 2



Looking for somewhere tucked away in a quiet cul-de-sac with open field views? This extended, detached bungalow offers fantastic & versatile accommodation in a pretty Norfolk village which is located just a few miles from the market town of Downham Market which has a direct rail route to London.

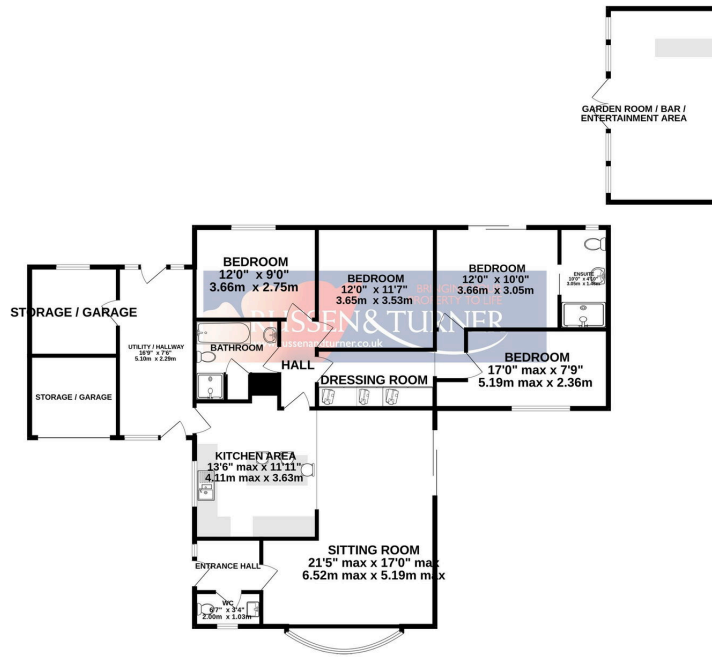




Key Features

- Detached bungalow
- Open plan living
- Versatile accommodation
- Field views
- Solar panels
- 4 Bedrooms
- Ensuite
- Cul-de-sac
- Desirable location
- Garden room

GROUND FLOOR
1734 sq.ft. (161.1 sq.m.) approx.



TOTAL FLOOR AREA: 1734 sq.ft. (161.1 sq.m.) approx.

Whilst every attempt has been made to ensure the accuracy of the footprint contained here, measurements of doors, windows, rooms and any other items are approximate and no responsibility is taken for any error, omission or misstatement. This plan is for illustrative purposes only and should be used as such by any prospective purchaser. The services, systems and appliances shown have not been tested and no guarantee is given for their operability or efficiency can be given.
Made with Metrexx ©2024

