

27 Russett Close, King's Lynn PE30 3HB

£235,000

3 1 2



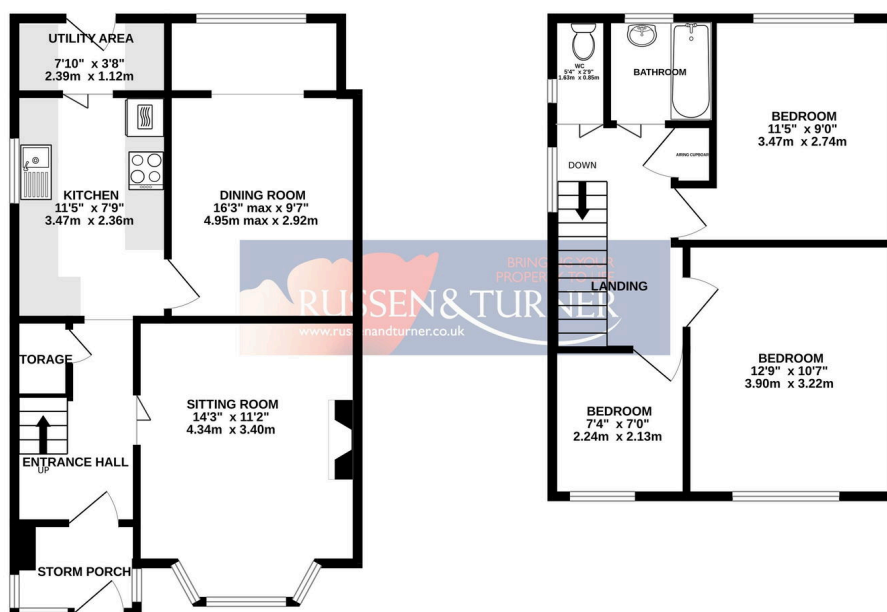
Set back in a cul-de-sac, on the desirable Reffley development, sits this family home which has been in the same ownership since new and which enjoys a wider than average plot. The house has been extended over the years and has double glazing and gas central heating.

Key Features

- Semi-detached house
- 2 Receptions
- Ample parking
- PVCu double glazed
- No chain
- 3 Bedrooms
- Extended
- Gas central heating
- Cul-de-sac
- Desirable area

GROUND FLOOR
495 sq.ft. (46.0 sq.m.) approx.

1ST FLOOR
419 sq.ft. (39.0 sq.m.) approx.



TOTAL FLOOR AREA: 914 sq.ft. (84.9 sq.m.) approx.

Whilst every attempt has been made to ensure the accuracy of the floorplan contained here, measurements of doors, windows, rooms and any other items are approximate and no responsibility is taken for any error, omission or mis-statement. This plan is for illustrative purposes only and should be used as such by any prospective purchaser. The services, systems and appliances shown have not been tested and no guarantee as to their operability or efficiency can be given.
Made with Metropix ©2024