



18 Aylmer Drive, Tilney St Lawrence, King's Lynn PE34 4RQ

£129,995

2 1 1



IDEAL FIRST HOME! A short stroll from the heart of the village where you'll find the local pub and shop, this two bedroom, mid terraced home could be your ideal first home. Offering huge potential, the home boasts allocated parking, electric heating, a rear garden and comfortable accommodation.



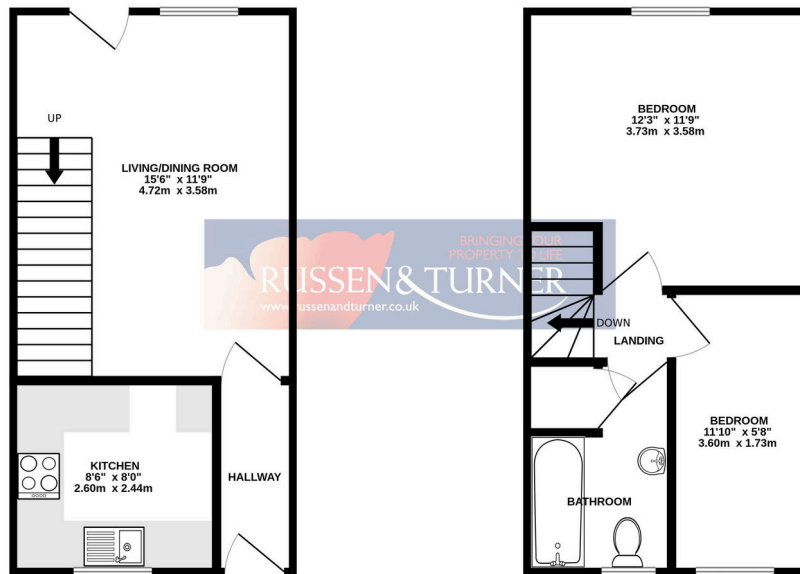


Key Features

- Mid Terraced House
- Perfect First Home
- Garden
- Village Setting - Close to Pub and Shop
- Council Tax Band - A
- Two Bedrooms
- Would Benefit from Updating
- Allocated Off-road Parking
- Electric Heating
- Potential Investment Opportunity

GROUND FLOOR
276 sq.ft. (25.6 sq.m.) approx.

1ST FLOOR
276 sq.ft. (25.6 sq.m.) approx.



TOTAL FLOOR AREA - 552 sq.ft. (51.3 sq.m.) approx.

Whilst every attempt has been made to ensure the accuracy of the floorplan contained here, measurements of doors, windows, rooms and any other items are approximate and no responsibility is taken for any error, omission or mis-statement. This plan is for illustrative purposes only and should be used as such by any prospective purchaser. The services, systems and appliances shown have not been tested and no guarantee as to their operability or efficiency can be given.
Made with Metropix ©2024

