

Willow Farm, 15 Black Horse Road, Clenchwarton PE34 4DN

£745,000

 4  3  3

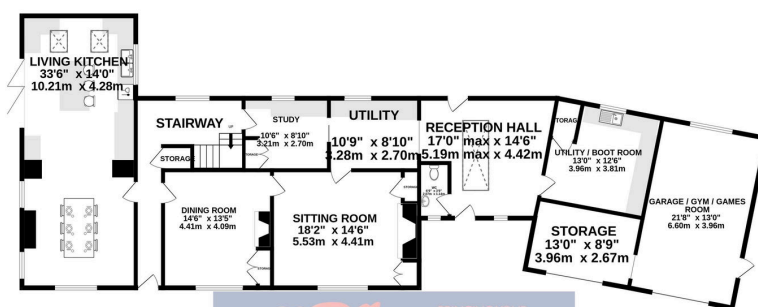


Willow Farm is more than just a house – it's a beautifully restored 18th-century farmhouse where history meets modern comfort. From the cosy inglenook fireplace and 33ft kitchen/living space to the sun-drenched garden with open Norfolk views, every detail has been thoughtfully designed for family life and effortless entertaining. With four stunning bedrooms, luxurious bathrooms, and a seamless blend of character and contemporary style, this is a home you'll never want to leave.

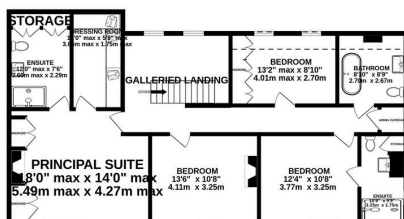
Key Features

- Period Farmhouse
- 2 Ensuities
- Over 1/3rd of an acre plot
- Utility
- Ample parking
- 4 Double bedrooms
- Beautiful finish throughout
- Walk-in dressing room
- Large entrance reception
- Stunning gardens

GROUND FLOOR
2029 sq.ft. (188.5 sq.m.) approx.



1ST FLOOR
1157 sq.ft. (107.5 sq.m.) approx.



TOTAL FLOOR AREA: 3187 sq.ft. (296.1 sq.m.) approx.

Whilst every attempt has been made to ensure the accuracy of the floorplan contained herein, measurements of doors, windows, rooms and any other items are approximate and no responsibility is taken for any error, omission or mis-statement. This plan is for illustrative purposes only and should be used as such by any prospective purchaser. The services, systems and appliances shown have not been tested and no guarantee as to their operability or efficiency can be given.
Made with Metropix (2024)

