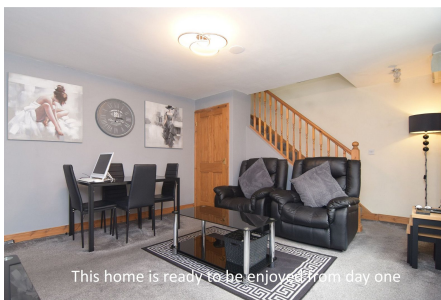




## 2 Rope Walk, King's Lynn PE30 2AU

£119,995

1 1 1



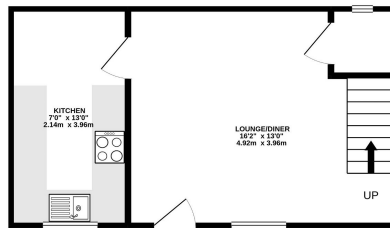
Turn the key, move your furniture in and relax, moving home has never been so easy. A perfect first home or an ideal investment opportunity, this one bedroom, end of terrace house is ready to enjoy from the moment you step foot inside. It's stylish and well presented accommodation are perfectly complemented by it's very own private rear garden.



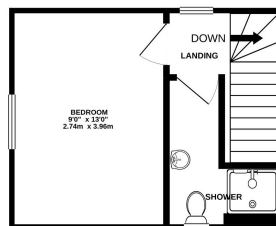
## Key Features

- End of Terrace House
- Wonderful Presentation - Move in Ready
- Private, Low Maintenance Rear Garden
- Modern Shower Room
- Ideal First Home or Potential Investment Opportunity
- One Bedroom
- Electric Heating
- Contemporary Kitchen
- Stylish Living Space
- Leasehold - Approximately 88 Years Remaining

GROUND FLOOR  
301 sq.ft. (28.0 sq.m.) approx.



1ST FLOOR  
208 sq.ft. (19.3 sq.m.) approx.



TOTAL FLOOR AREA: 509 sq.ft. (47.3 sq.m.) approx.

Whilst every attempt has been made to ensure the accuracy of the floorplan contained here, measurements of doors, windows, rooms and any other items are approximate and no responsibility is taken for any error, omission or mis-statement. This plan is for illustrative purposes only and should be used as such by any prospective purchaser. The services, systems and appliances shown have not been tested and no guarantee as to their operability or efficiency can be given.  
Made with Mettlex ©2021

