


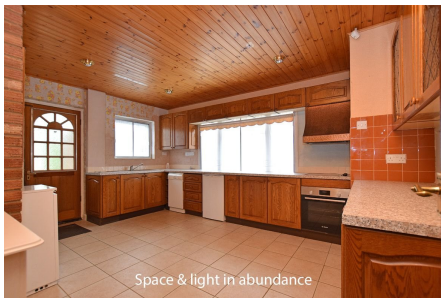




## 11 Lynn Road, Grimston PE32 1AA

£425,000

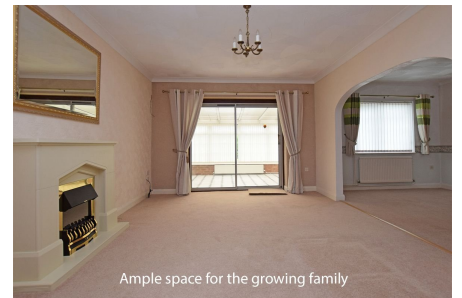
 4  2  2



Space & light in abundance



Filled views to the rear, enjoy the privacy



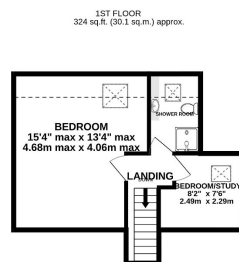
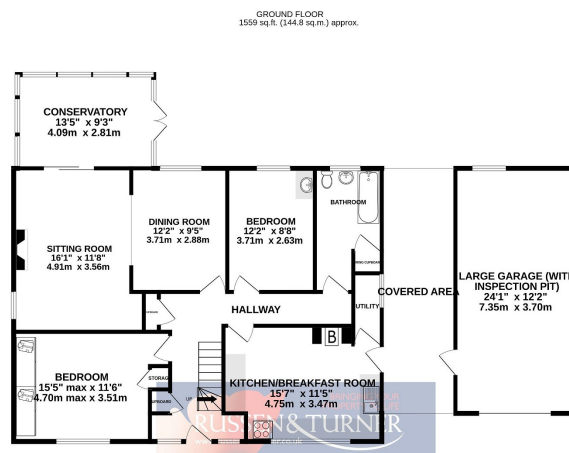
Ample space for the growing family

Are you looking for a family sized home? Somewhere with a large garden and with space for a growing family to love and enjoy for years to come?  
This large, detached, chalet-bungalow, backs on to open fields and boasts a generously sized, south facing garden with a large garage. Plus there is a heated swimming pool with a summer house making it the ideal home for family gatherings.



## Key Features

- Detached bungalow
- 2 Bath/shower rooms
- Large garage
- Field views
- Backs on to fields
- 4 Bedrooms
- Large plot
- Outdoor pool
- Private garden
- No chain



TOTAL FLOOR AREA: 1883 sq.ft. (174.9 sq.m.) approx.  
Whilst every attempt has been made to ensure the accuracy of the floorplan contained herein, measurements of doors, windows, rooms and any other items are approximate and no responsibility is taken for any error, omission or misstatement. This plan is for illustrative purposes only and should be used as such by any prospective purchaser. The services, systems and appliances shown have not been tested and no guarantee as to their equality or efficiency can be given.  
Made with Metrepro ©2024

