



## 50 Bransby Close, Kings Lynn PE30 5RY

£95,000

1 1 1



Located just a stone's throw from the stunning, Grade II listed park known as The Walks; which you can stroll through to get to town, is this 1 bedroom apartment. The accommodation is set on the 1st floor and has allocated parking and boasts a long lease which still has over 950 years remaining.

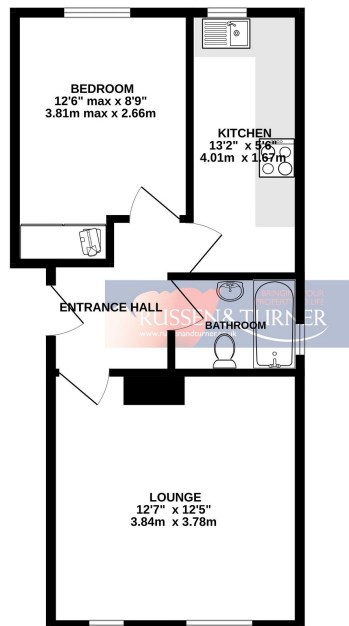




## Key Features

- 1st Floor apartment
- Allocated parking
- Electric heating
- Less than a mile from train station
- Long lease
- 1 Bedroom
- Desirable location
- Close to The Walks
- No Chain
- Band A council tax

GROUND FLOOR  
397 sq.ft. (36.9 sq.m.) approx.



TOTAL FLOOR AREA - 397 sq.ft. (36.9 sq.m.) approx.

Whilst every attempt has been made to ensure the accuracy of the description contained here, measurements of doors, windows, rooms and any other items are approximate and no responsibility is taken for any error, omission or mis-statement. This plan is for illustrative purposes only and should be used as such by any prospective purchaser. The services, systems and appliances shown have not been tested and no guarantee is given as to their operability or efficiency can be given.  
Made with Metropac C2024

