



## 16 Lavender Road, Gaywood PE30 4HA

£279,995

3 1 1



**BEAUTIFUL GARDENS!** Tucked away in a cul-de-sac, a short stroll from a wealth of local amenities, is this generously proportioned, bright and airy detached bungalow. Boasting a stunning rear garden, ample parking, a detached garage and a workshop/summerhouse, this is a must view property.

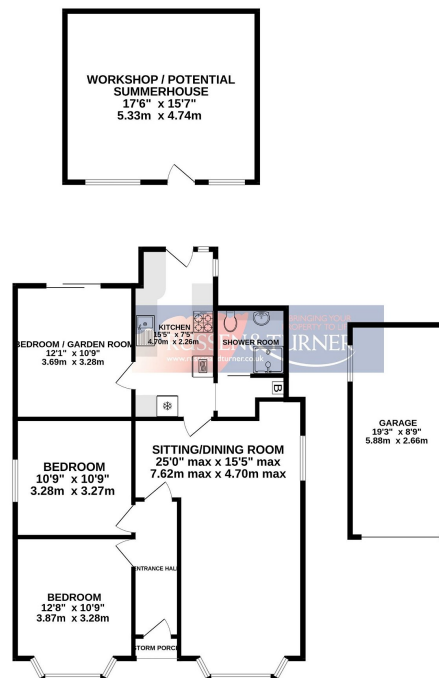




## Key Features

- Detached Bungalow
- 25ft Lounge Area
- Abundance of Off-road Parking
- Well Presented
- Gas Central Heating
- Three Double Bedrooms
- Stunning South Facing Rear Garden
- Garage
- Popular Location - Close to Local Amenities
- Workshop/Summerhouse

GROUND FLOOR  
1342 sq.ft. (124.7 sq.m.) approx.



TOTAL FLOOR AREA: 1342 sq.ft. (124.7 sq.m.) approx.

Whilst every attempt has been made to ensure the accuracy of the description contained herein, measurements of doors, windows, rooms and any other items are approximate and no responsibility is taken for any error, omission or mis-statement. This plan is for illustrative purposes only and should be used as such by any prospective purchaser. The services, systems and appliances shown have not been tested and no guarantee is given as to their operability or efficiency capabilities.  
Made with Metropac C2023

