



## 284 Main Road, Clenchwarton PE34 4AF

£489,995

4 2 2



**A MUST VIEW FAMILY HOME!** Imagine watching the sun rise over the Norfolk countryside with your morning coffee. This beautifully presented family home offers you the opportunity to do exactly that. Offering everything and more a family could want, this fabulous home must be viewed!

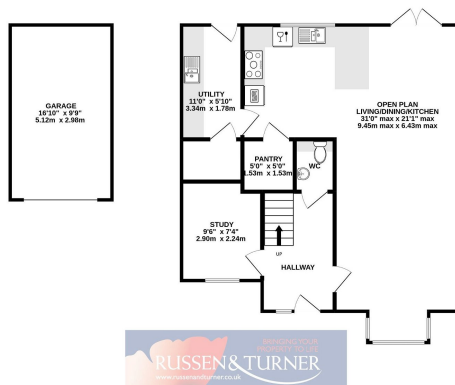




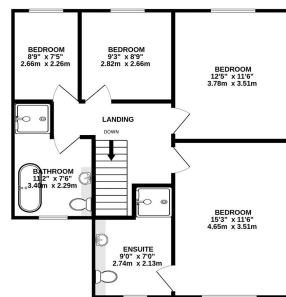
## Key Features

- Detached Family Home
- Contemporary Open Plan Accommodation
- Detached Garage and Off-road Parking
- South Facing Garden
- Superb Attention to Detail
- Four Well Proportioned Bedrooms
- Stunning Presentation
- Stunning Views over Fields Behind
- Close to Village Pub, Playing Field, School and Shop
- A Home Perfect for Entertaining

GROUND FLOOR  
899 sq.ft. (83.6 sq.m.) approx.



1ST FLOOR  
682 sq.ft. (63.3 sq.m.) approx.



TOTAL FLOOR AREA: 1581 sq.ft. (146.9 sq.m.) approx.

Whilst every attempt has been made to ensure the accuracy of the floorplan contained here, measurements of doors, windows, rooms and any other items are approximate and no responsibility is taken for any error, omission or mis-statement. This plan is for illustrative purposes only and should be used as such by any prospective purchaser. The services, systems and appliances shown have not been tested and no guarantee as to their operability or efficiency can be given.  
Made with Metropix ©2022

