



10 Lavender Court, King's Lynn PE30 4HL

£104,995

2 1 1



NO ONWARD CHAIN! Set just off of Wootton Road and all the amenities that the area offers, is this bright and airy, over 55's, first floor apartment. Tucked at the bottom of the close, enjoy the peace and quiet, communal gardens and fabulous accommodation this apartments boasts.

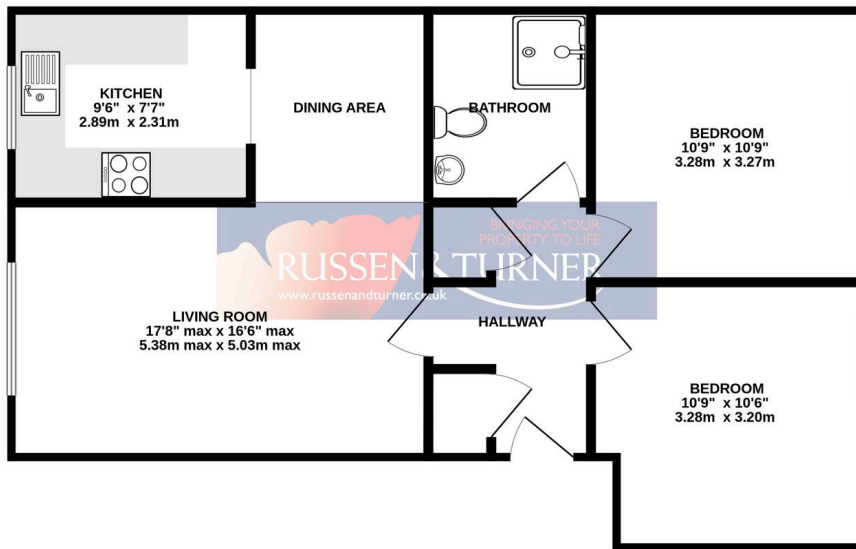




Key Features

- First Floor Apartment
- Over 55's Accommodation
- No Onward Chain
- Communal Gardens
- Modern Kitchen
- Two Double Bedrooms
- Sought After Location - Close to Local Amenities
- Electric Heating
- Open Plan Living/Dining Room
- Ready to move into

GROUND FLOOR
629 sq.ft. (58.5 sq.m.) approx.



TOTAL FLOOR AREA : 629 sq.ft. (58.5 sq.m.) approx.

Whilst every attempt has been made to ensure the accuracy of the floorplan contained here, measurements of doors, windows, rooms and any other items are approximate and no responsibility is taken for any error, omission or mis-statement. This plan is for illustrative purposes only and should be used as such by any prospective purchaser. The services, systems and appliances shown have not been tested and no guarantee as to their operability or efficiency can be given.
Made with Metropix ©2024

