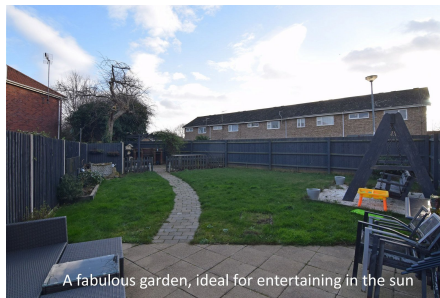




## 17 Victoria Close, King's Lynn PE30 3FF

Offers Over £310,000

3 2 2



If you love entertaining, this is the home for you. Whether it's inside or out, this home has been built with socialising in mind, from the generous garden, to the bright and airy accommodation and ample parking. Your friends and family will never want to leave.

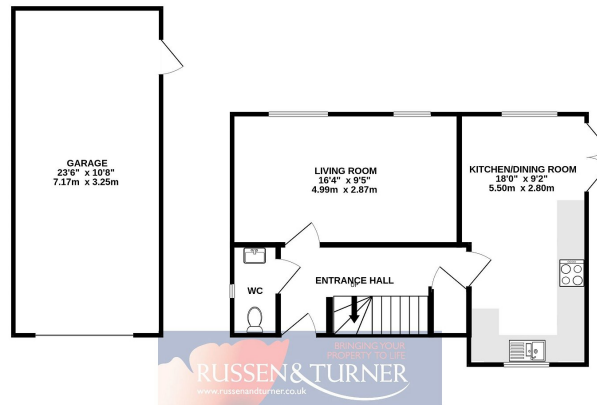




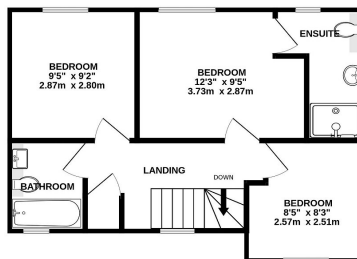
## Key Features

- Detached House
- Modern Family Home
- Generous Garden
- Off-road Parking and Garage
- En-suite Shower Room
- Three Bedrooms
- Sought After Location - Bottom of Cul-de-sac
- Gas Central Heating
- Bright and Airy Accommodation
- 18ft Kitchen/Dining Room

GROUND FLOOR  
674 sq.ft. (62.6 sq.m.) approx.



1ST FLOOR  
425 sq.ft. (39.5 sq.m.) approx.



TOTAL FLOOR AREA: 1099 sq.ft. (102.1 sq.m.) approx.

Whilst every attempt has been made to ensure the accuracy of the floorplan contained here, measurements of doors, windows, rooms and any other items are approximate and no responsibility is taken for any error, omission or mis-statement. This plan is for illustrative purposes only and should be used as such by any prospective purchaser. The services, systems and appliances shown have not been tested and no guarantee as to their operability or efficiency can be given.  
Made with Metropix ©2021

