


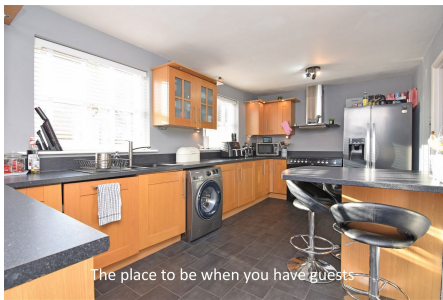




25 Rainsthorpe, South Wootton PE30 3UF

£380,000

 4  2  2

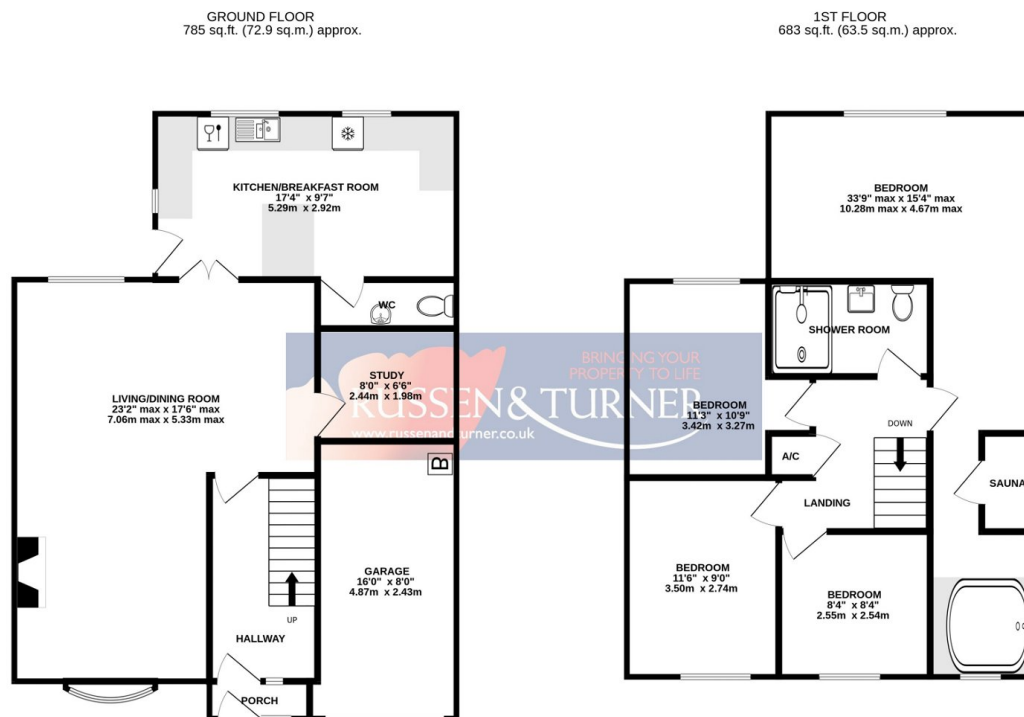


Want your next home to be modern and stylish? Want to be able to walk your children to school or run to the shops from your doorstep? This bright and airy, versatile, family home offers you the opportunity to do exactly that. View now to see everything else this home has to offer.



Key Features

- Detached House
- Superb Accommodation
- Garden Ideal for Entertaining
- Garage and Off-road Parking
- Superb Main Bedroom with Sauna and Spa Bath
- Four Bedrooms
- Modern Kitchen/Breakfast Room
- Close to Local Primary School and Shops
- Set within a cul-de-sac
- Gas Central Heating



TOTAL FLOOR AREA : 1468 sq.ft. (136.4 sq.m.) approx.

Whilst every attempt has been made to ensure the accuracy of the floorplan contained here, measurements of doors, windows, rooms and any other items are approximate and no responsibility is taken for any error, omission or mis-statement. This plan is for illustrative purposes only and should be used as such by any prospective purchaser. The services, systems and appliances shown have not been tested and no guarantee as to their operability or efficiency can be given.
Made with Metropix ©2024