



## 5 Yoxford Court, King's Lynn PE30 5PP

£234,995

3 1 2

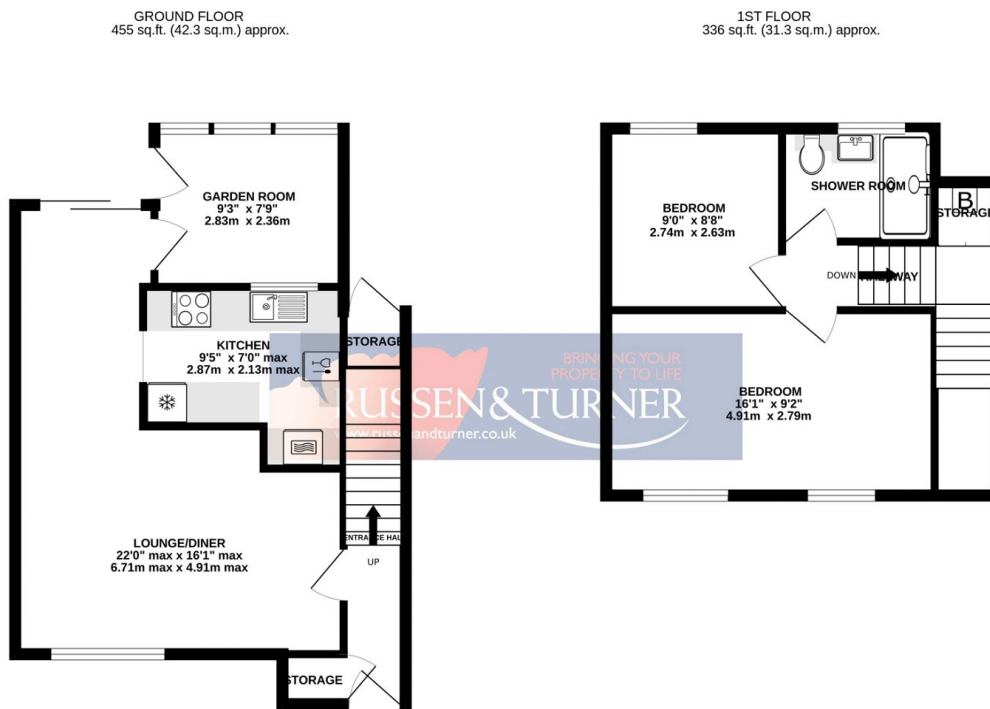


Light, bright and modern! If you're looking for a home, within easy walking distance of the town, the train station and all the local amenities then look no further. Originally a 3 bedroom home, the house has been changed slightly to create 2 large bedrooms which could easily be converted back to 3 if desired. The house has a garage, a low-maintenance garden and is ready to be moved into...want to view? Call us now.



## Key Features

- Link-detached house
- Fantastic presentation
- Garage
- Close to amenities
- Double glazed
- 2 Bedrooms (was 3)
- Garden room
- Popular location
- Gas central heating
- No chain



TOTAL FLOOR AREA : 791 sq.ft. (73.5 sq.m.) approx.

Whilst every attempt has been made to ensure the accuracy of the floorplan contained here, measurements of doors, windows, rooms and any other items are approximate and no responsibility is taken for any error, omission or mis-statement. This plan is for illustrative purposes only and should be used as such by any prospective purchaser. The services, systems and appliances shown have not been tested and no guarantee as to their operability or efficiency can be given.  
Made with Metropix ©2023

