






63 Goodwins Road, King's Lynn PE30 5PE

Offers Over £250,000

 7  3  2



Calling All Investors!! Russen & Turner are pleased to offer to the market this substantial three storey period property which is currently being used as a HMO (House in Multiple Occupation). The accommodation includes a communal kitchen/reception room, five letting rooms and a two bedroom apartment on the second floor.

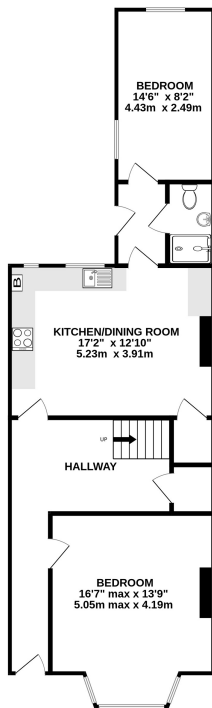




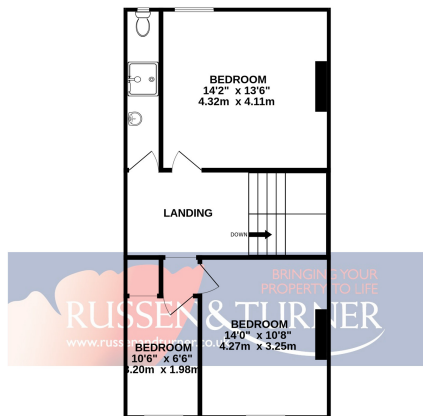
Key Features

- Gas Central Heating
- Communal Kitchen and Gardens
- Five Letting Rooms
- HMO - House in Multiple Occupation
- Desirable Location Close to Amenities
- Second Floor Two Bedroom Apartment
- Ideal Investment Opportunity
- Semi-Detached House

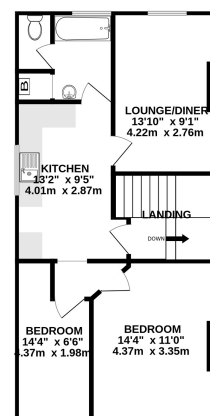
GROUND FLOOR
778 sq.ft. (72.3 sq.m.) approx.



1ST FLOOR
581 sq.ft. (54.0 sq.m.) approx.



2ND FLOOR
581 sq.ft. (54.0 sq.m.) approx.



TOTAL FLOOR AREA: 1941 sq.ft. (180.3 sq.m.) approx.

Whilst every attempt has been made to ensure the accuracy of the floorplan contained here, measurements of doors, windows, rooms and any other items are approximate and no responsibility is taken for any error, omission or mis-statement. This plan is for illustrative purposes only and should be used as such by any prospective purchaser. The services, systems and appliances shown have not been tested and no guarantee is given as to their operability or efficiency can be given.
Made with Metropix ©2023

