






7 Chapel Court, Chapel Street, PE30 1EG

Offers Over £100,000

 2  1  1



Available with no onward chain is this 2 bedroom, 1st floor apartment which is located in the town centre. The property, which must be occupied by a person over the age of 55 years of age, has gas central heating and double glazing and has a long lease of 967 years.



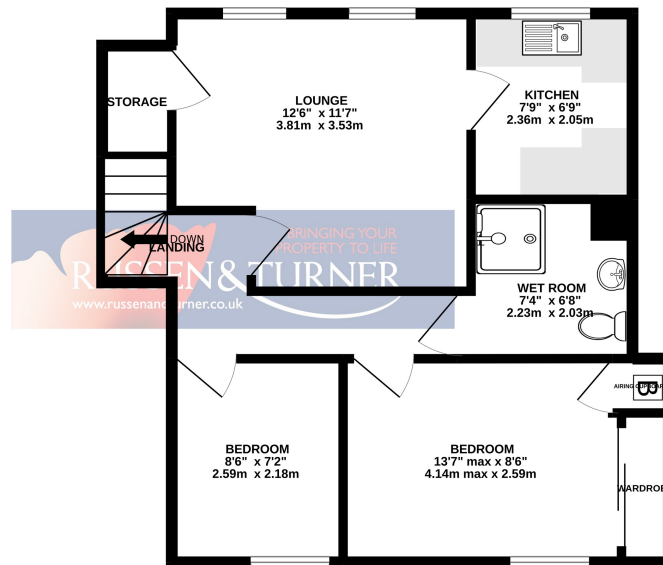


Key Features

- First floor apartment
- Gas central heating
- Parking available
- Over 55's
- Town centre location
- 2 Bedrooms
- Wet room
- No chain
- EPC - C
- what3words - wacky.term.award

GROUND FLOOR
33 sq.ft. (3.0 sq.m.) approx.

FIRST FLOOR
479 sq.ft. (44.5 sq.m.) approx.



TOTAL FLOOR AREA: 512 sq.ft. (47.5 sq.m.) approx.

Whilst every attempt has been made to ensure the accuracy of the floorplan contained here, measurements of doors, windows, rooms and any other items are approximate and no responsibility is taken for any error, omission or mis-statement. This plan is for illustrative purposes only and should be used as such by any prospective purchaser. The services, systems and appliances shown have not been tested and no guarantee as to their operability or efficiency can be given.
Made with Metropix ©2022

