

www.sterlinghomes.co.uk

Tring, Wendover,  
Aylesbury & Villages:  
01442 828 222  
Berkhamsted Select  
& Country Homes:  
01442 879 996  
Property  
Management  
01442 822 210  
Kings Langley, Abbots  
Langley & Watford:  
01923 270 666

Is there a **price** that would **tempt**  
you to **sell** or **let** your property?  
Contact us for a **free valuation**  
and let's see if we can **tempt** you!

# Temptation comes in many forms...



sterling  
select homes



sterling  
select homes



Tring

ASKING PRICE £750,000



Tring

ASKING PRICE

£750,000

" SALE AGREED PRIOR TO ADVERTISING AS PART OF OUR DISCREET MARKETING CAMPAIGN"  
An immaculately presented 1930's family home which has been extended by the current owners to offer a wonderful open plan kitchen/dining/family room at the rear with wood burning stove, separate utility room and cloakroom. The spacious entrance hall has a study area while the first floor has four double bedrooms and family bathroom.

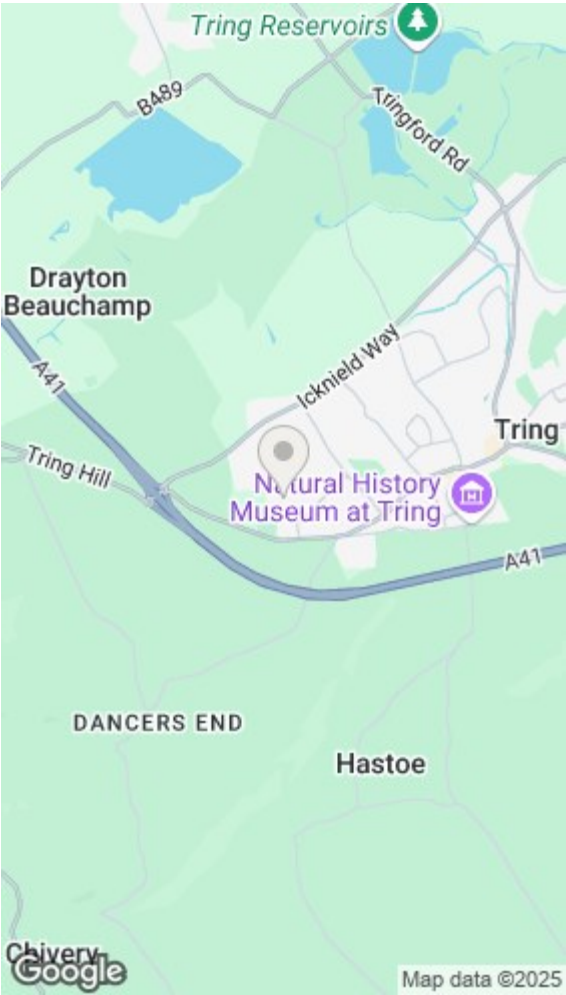


www.sterlinghomes.co.uk



Total area: approx. 122.4 sq. metres (1317.1 sq. feet)

All measurements are approximate.  
Plan produced using PlanUp.

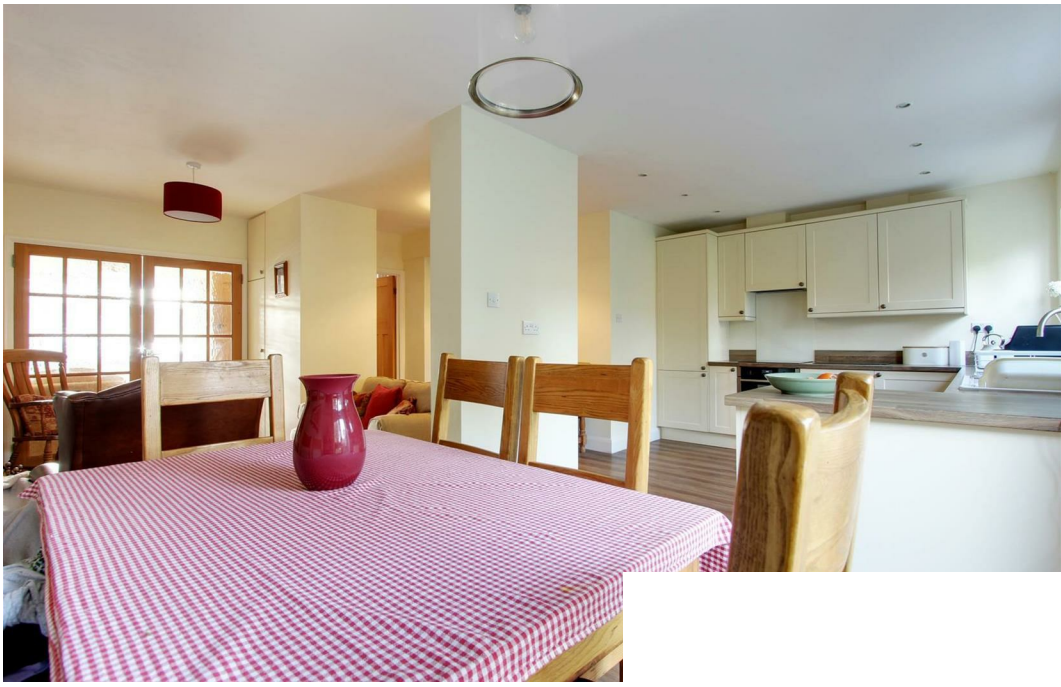


Energy Efficiency Rating			Environmental Impact (CO <sub>2</sub> ) Rating		
Very energy efficient - lower running costs	Current	Potential	Very environmentally friendly - lower CO <sub>2</sub> emissions	Current	Potential
(92 plus) A			(92 plus) A		
(81-91) B			(81-91) B		
(69-80) C			(69-80) C		
(55-68) D			(55-68) D		
(39-54) E			(39-54) E		
(21-38) F			(21-38) F		
(1-20) G			(1-20) G		
Not energy efficient - higher running costs			Not environmentally friendly - higher CO <sub>2</sub> emissions		
England & Wales	EU Directive 2002/91/EC		England & Wales	EU Directive 2002/91/EC	









[www.sterlinghomes.co.uk](http://www.sterlinghomes.co.uk)



[www.sterlinghomes.co.uk](http://www.sterlinghomes.co.uk)