



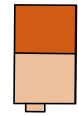
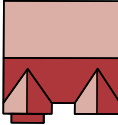

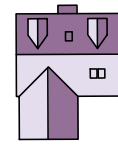

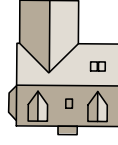
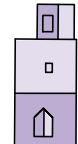
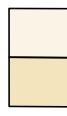
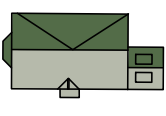

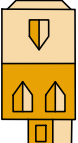
Farendon Fields

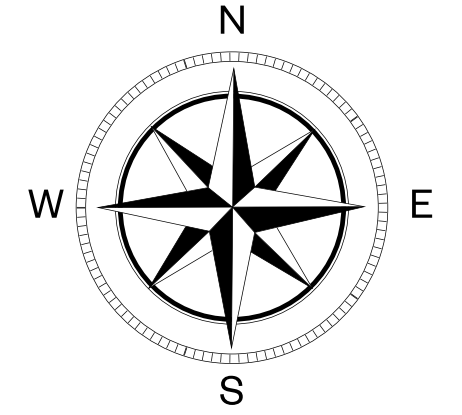
Weston Turville



Farendon Fields, Weston Turville

The development

- | | | | |
|---|---|---|--|
|  | The Dinfield
2 bedroom semi-detached/terraced home |  | The Oak
4 bedroom detached home |
|  | The Aspen
2 bedroom semi-detached home |  | The Oatfield
4 bedroom detached home |
|  | The Gosfield
3 bedroom semi-detached/terraced home |  | The Oatvale
4 bedroom detached home |
|  | The Ickhurst
3 bedroom semi-detached home |  | Housing Association |
|  | The Kiswick
3 bedroom detached/semi-detached/
end terrace home |  | Shaded sections are homes
subject to planning |
|  | The Madeley
4 bedroom semi-detached home | | |



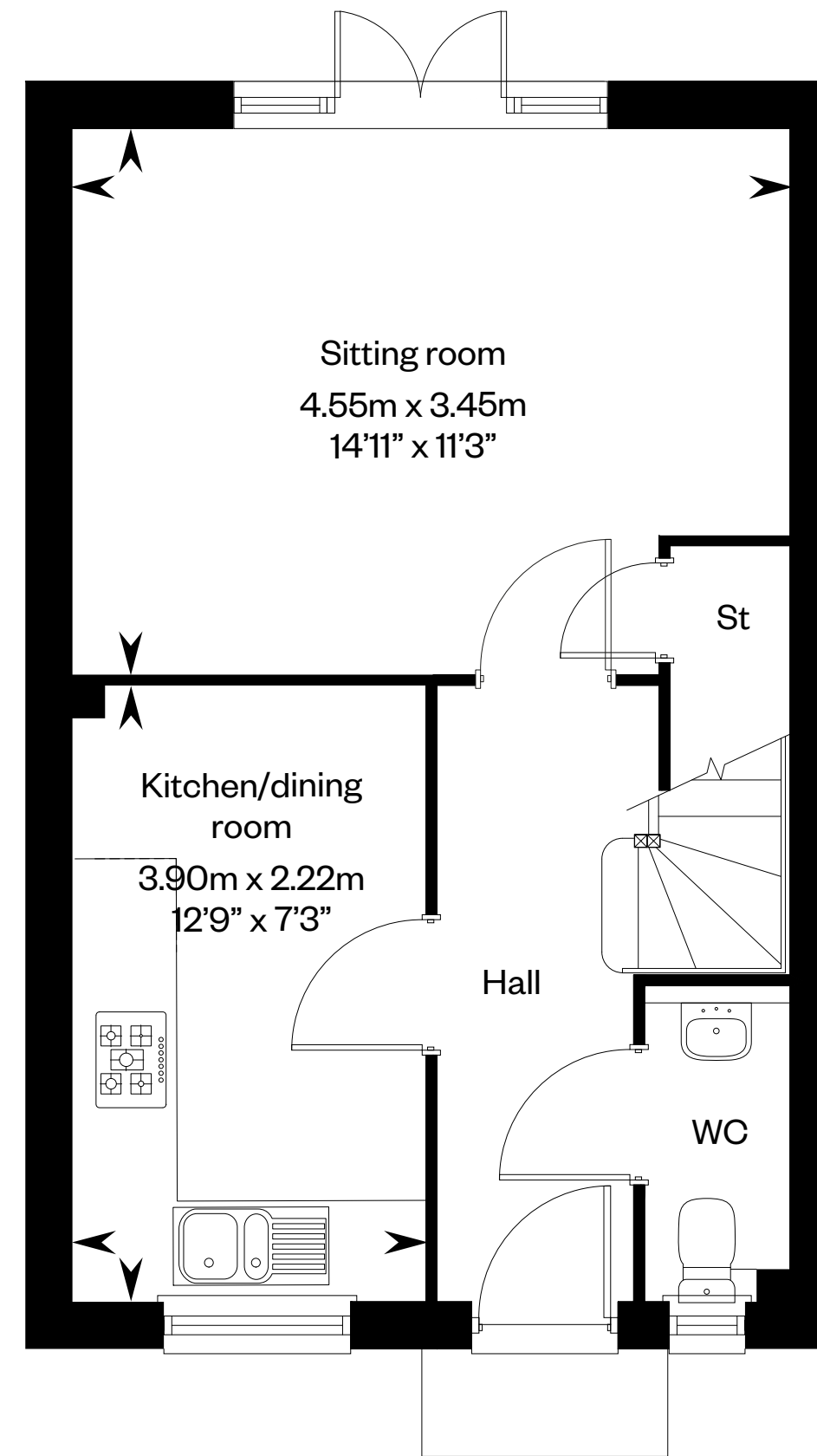
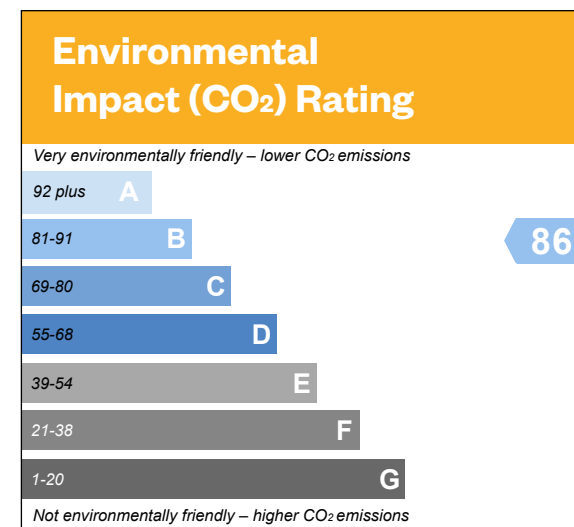
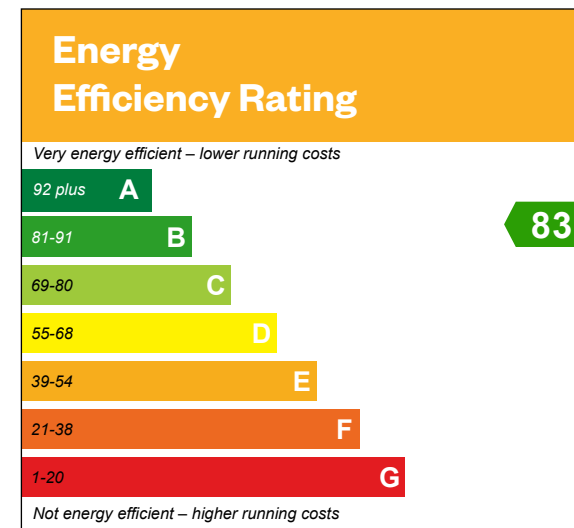
The above development layout is not drawn to scale and is for general guidance only. Road layouts, pathways, chimneys and external treatments may differ. Landscaping is indicative only. Please confirm the most up-to-date details with our Sales Consultant prior to reservation. Shaded sections are homes subject to planning. BS: Bin Store. CS: Cycle Store. SS: Sub Station. Children's playground with play equipment.

The Dinfield

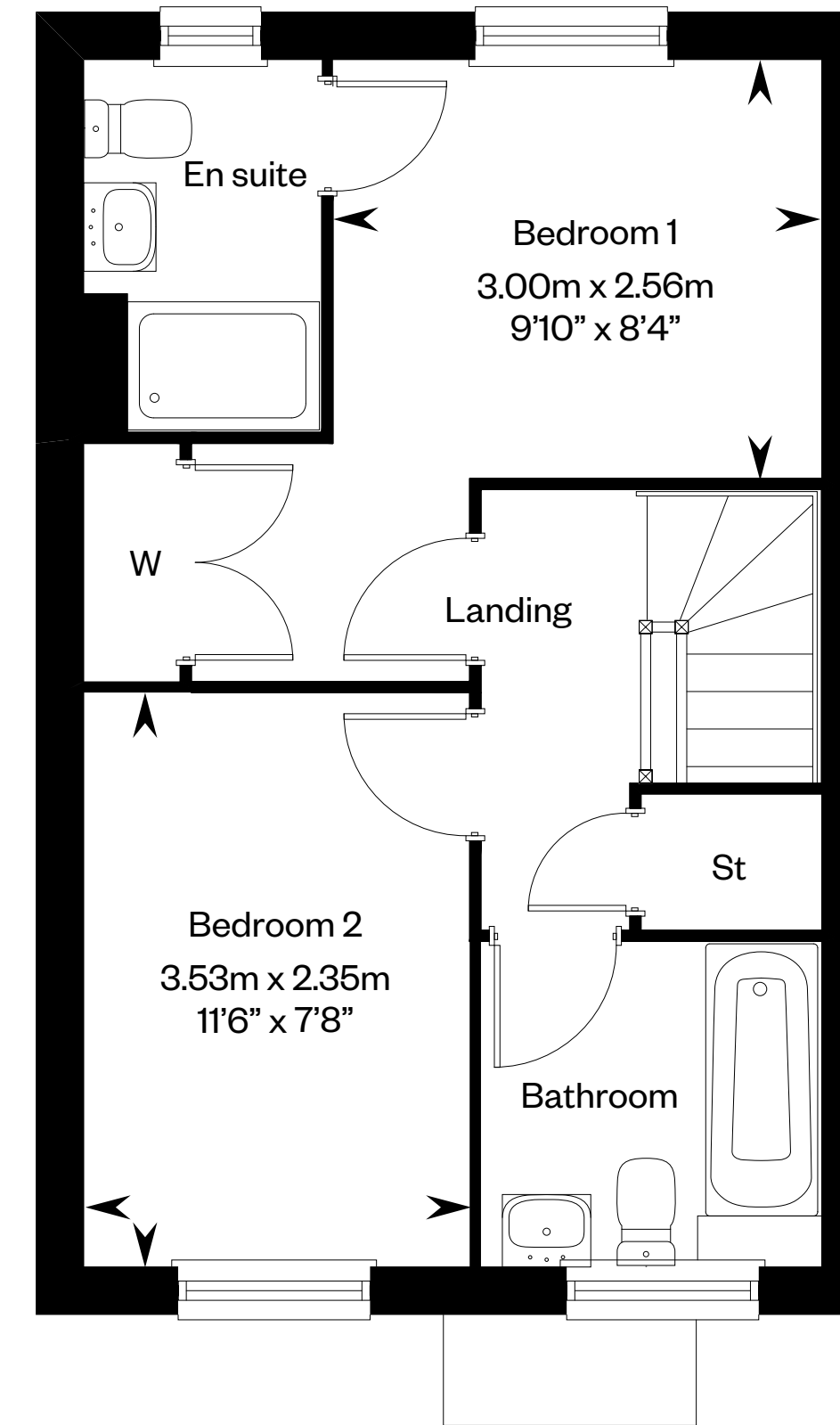
2 bedroom semi-detached and terraced home



The Dinfield



Ground floor



First floor

Please ask your Sales Consultant for further details. St: Store cupboard. W: Wardrobe.

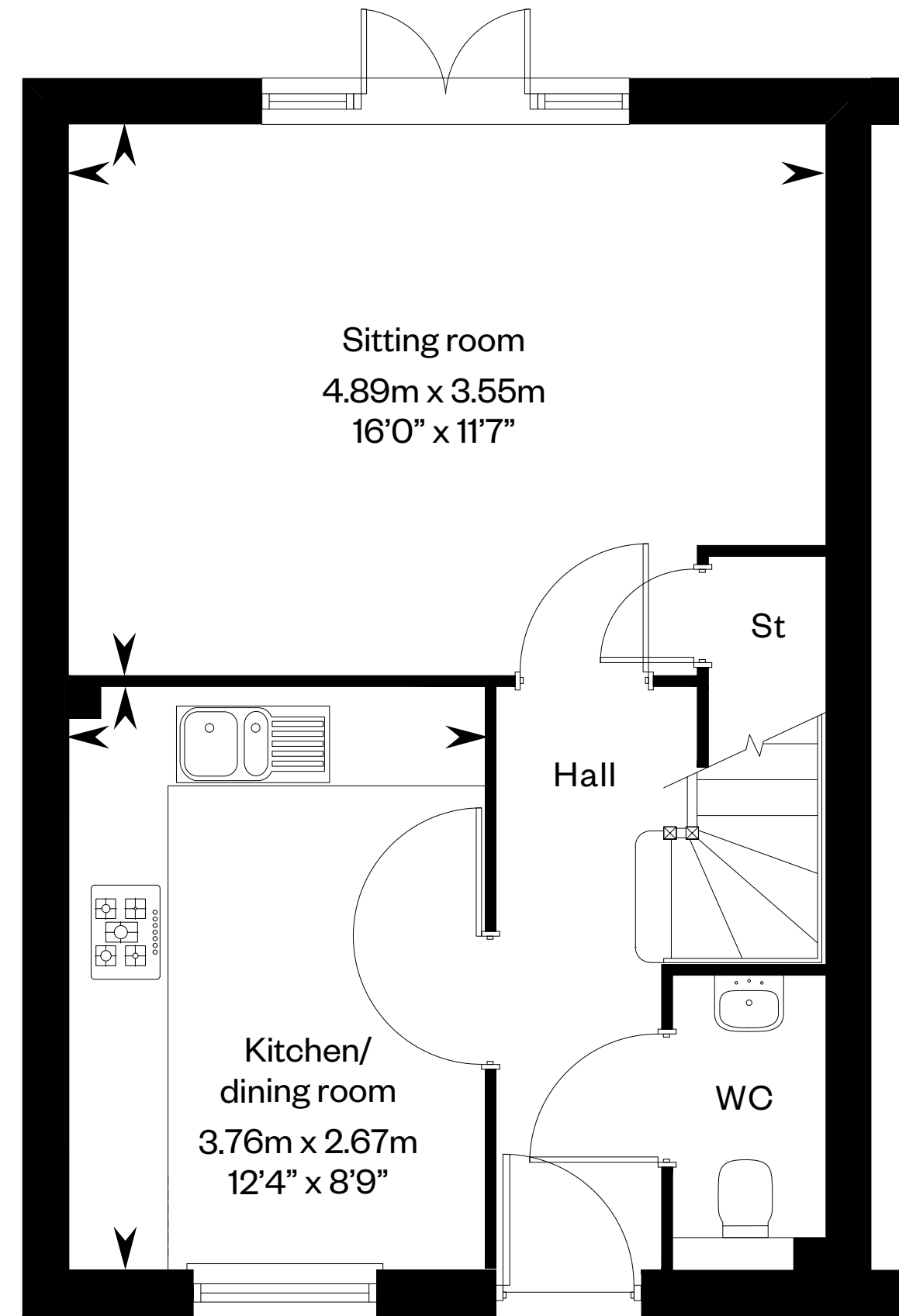
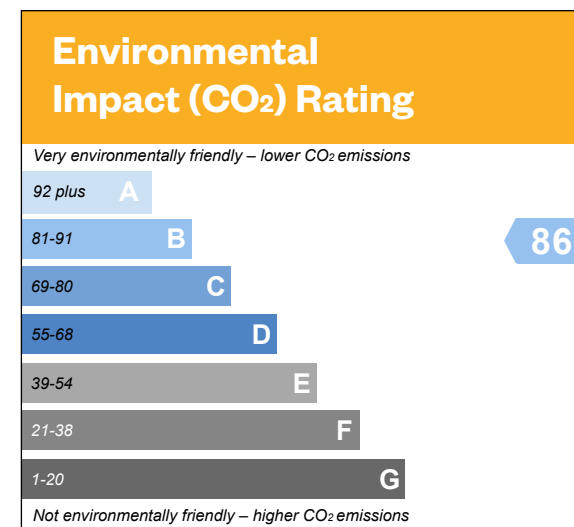
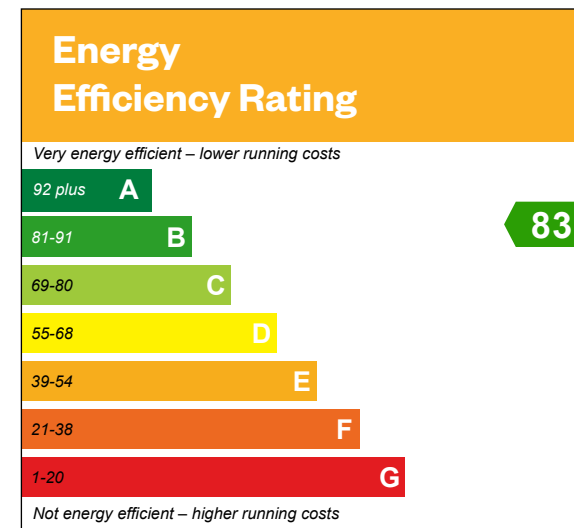
IMPORTANT NOTICE TO CUSTOMERS: The Consumer Protection from Unfair Trading Regulations 2008. Cala Homes (Chiltern) Limited operates a policy of continual product development and the specifications outlined in this brochure are indicative only. The computer generated images and photographs do not necessarily represent the actual finishings/elevation or treatments, landscaping, furnishings and fittings at this development. Information contained is accurate at date of publication on **XX**. See the main brochure for the full Consumer Protection statement. This is a Predicted Energy Assessment for properties that are incomplete. Once the property is completed, this rating will be updated and an official Energy Performance Certificate will be created for the property.

The Aspen

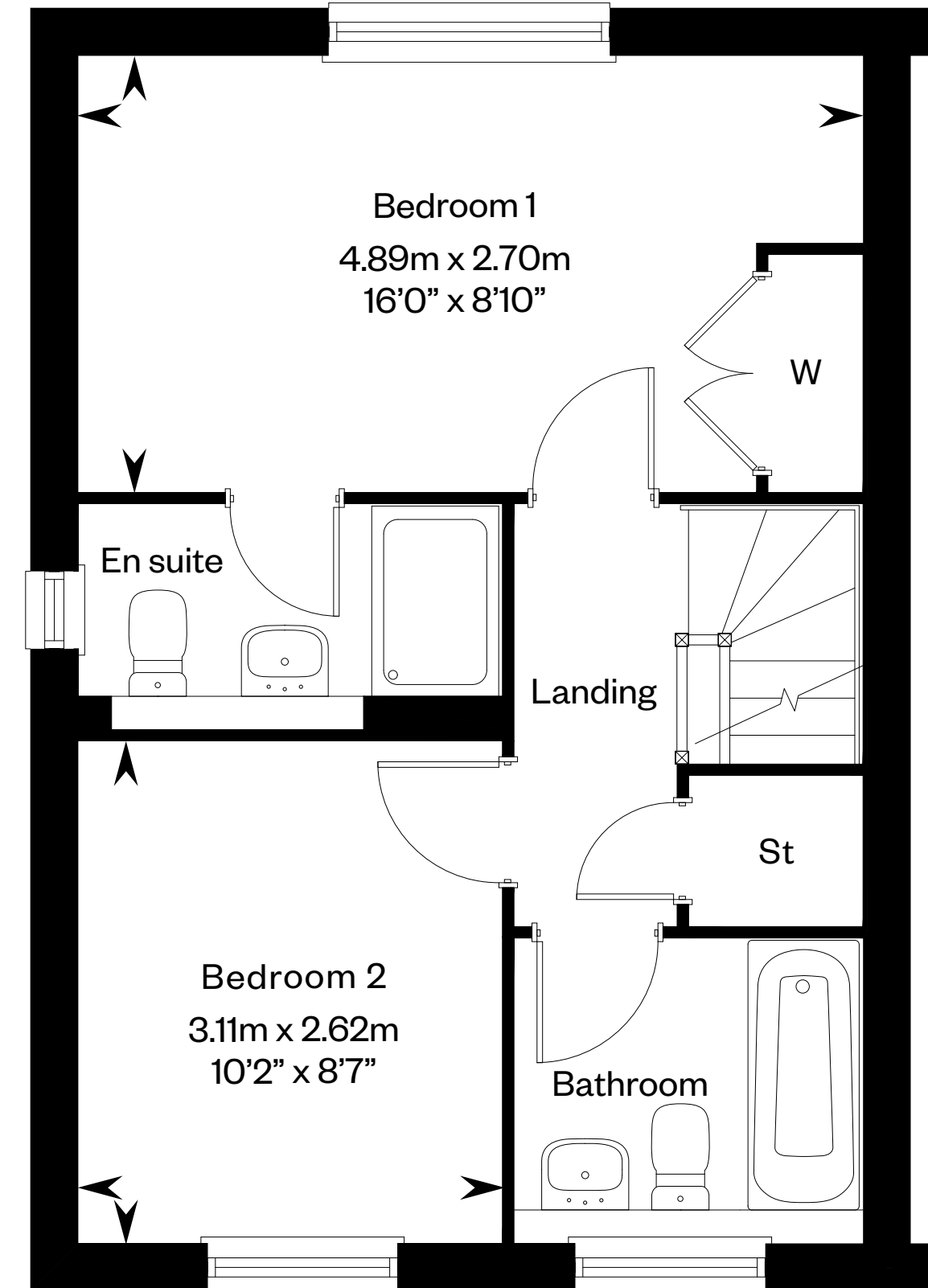
2 bedroom semi-detached home



The Aspen



Ground floor



First floor

Please ask your Sales Consultant for further details. St: Store cupboard. W: Wardrobe.

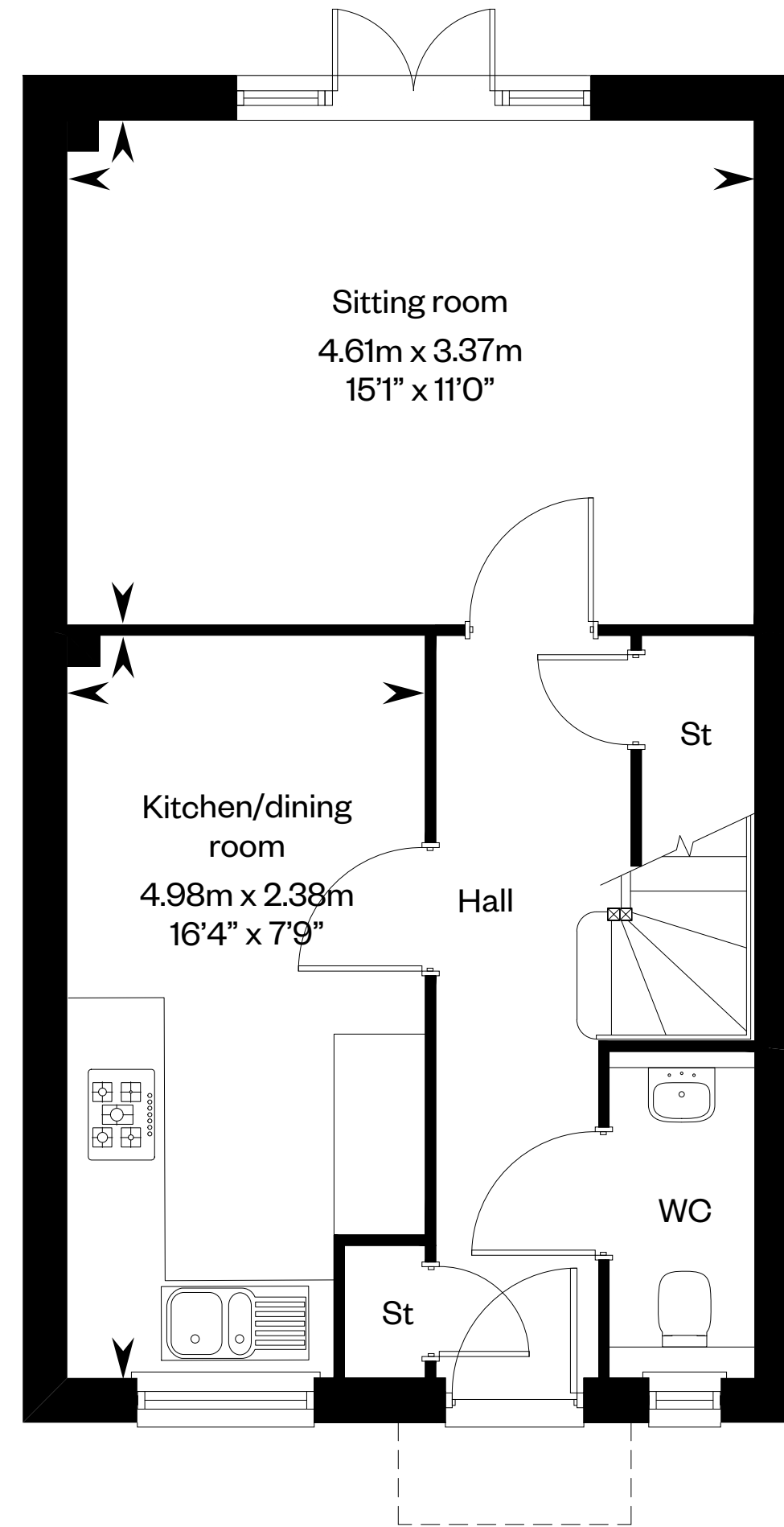
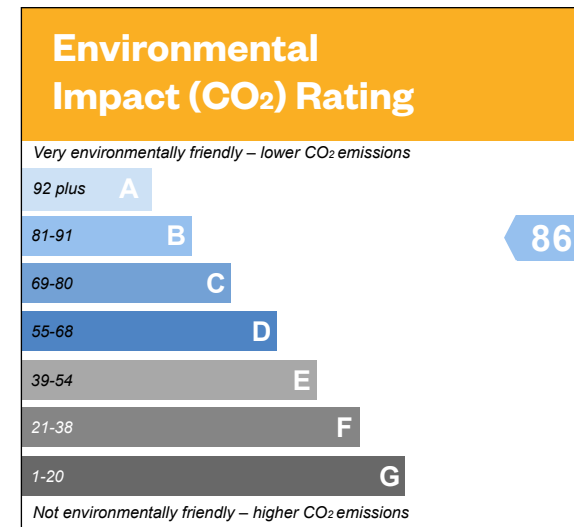
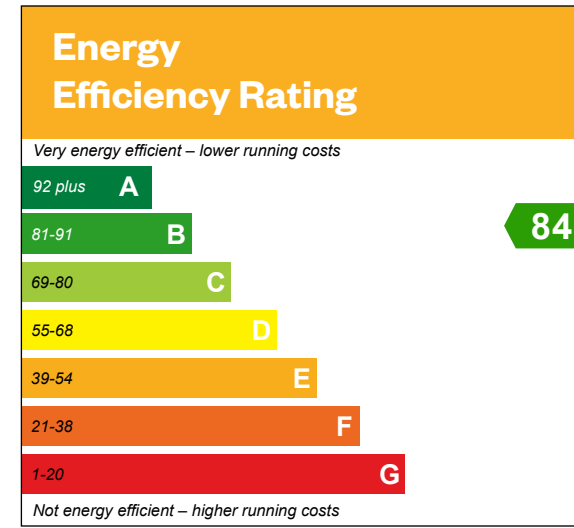
IMPORTANT NOTICE TO CUSTOMERS: The Consumer Protection from Unfair Trading Regulations 2008. Cala Homes (Chiltern) Limited operates a policy of continual product development and the specifications outlined in this brochure are indicative only. The computer generated images and photographs do not necessarily represent the actual finishings/elevation or treatments, landscaping, furnishings and fittings at this development. Information contained is accurate at date of publication on **XX**. See the main brochure for the full Consumer Protection statement. This is a Predicted Energy Assessment for properties that are incomplete. Once the property is completed, this rating will be updated and an official Energy Performance Certificate will be created for the property.

The Gosfield

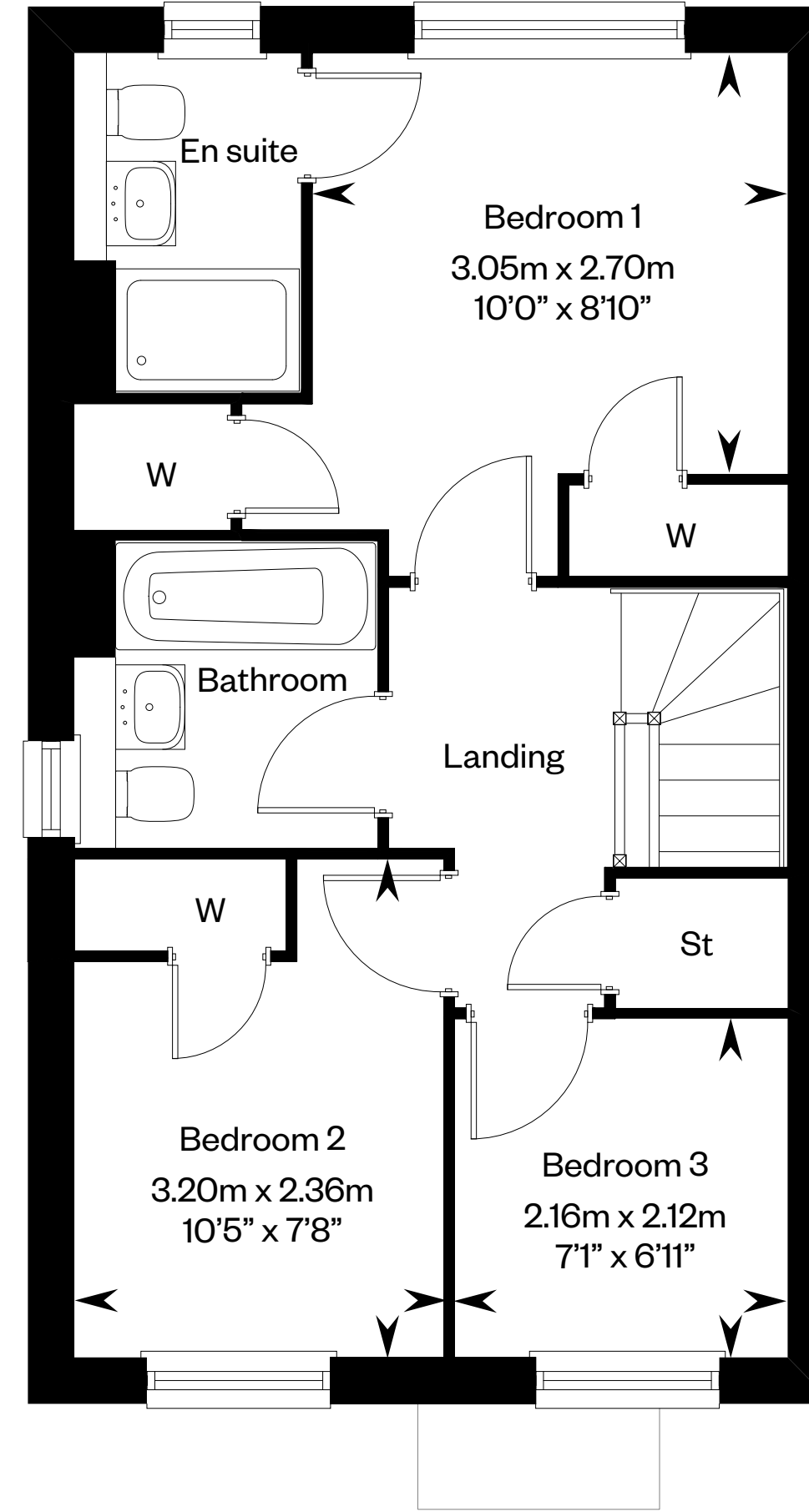
3 bedroom semi-detached and terraced home



The Gosfield



Ground floor



First floor

Please ask your Sales Consultant for further details. St: Store cupboard. W: Wardrobe.

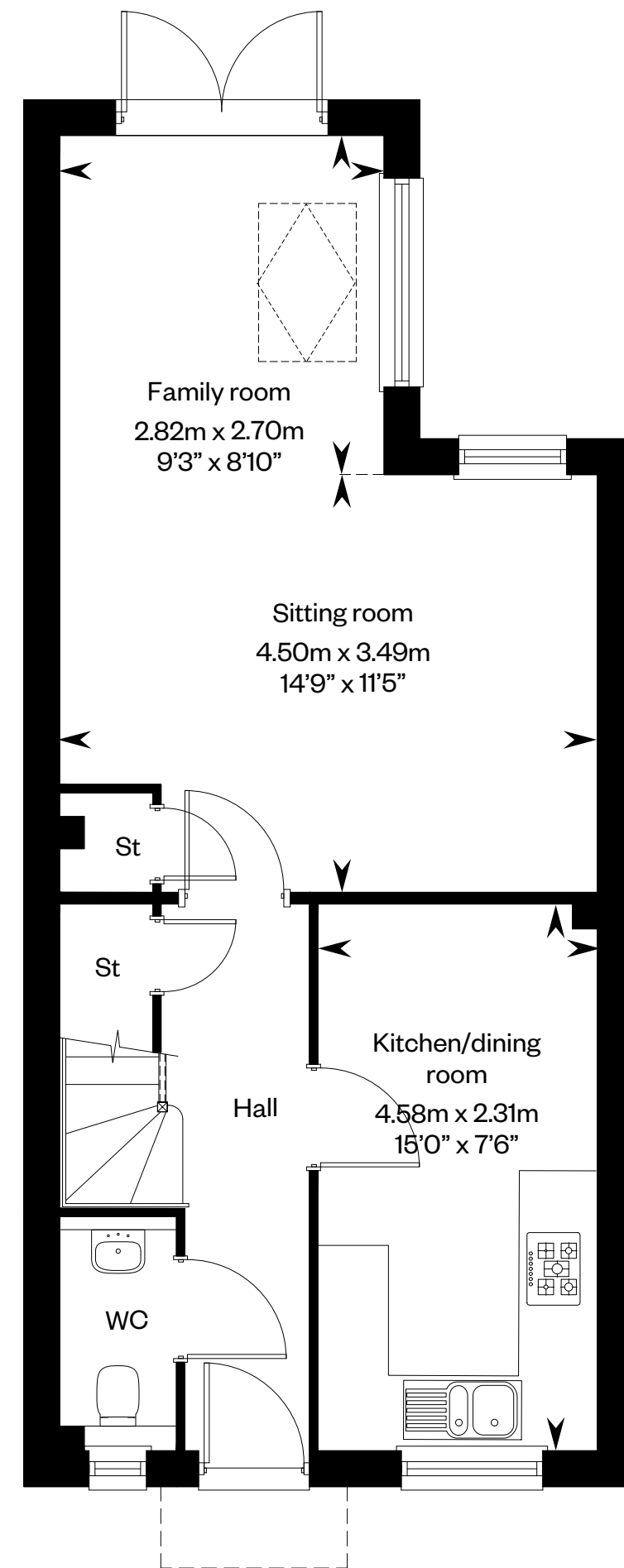
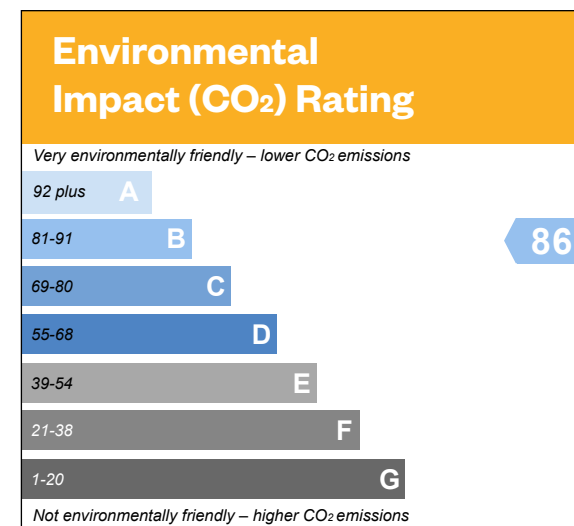
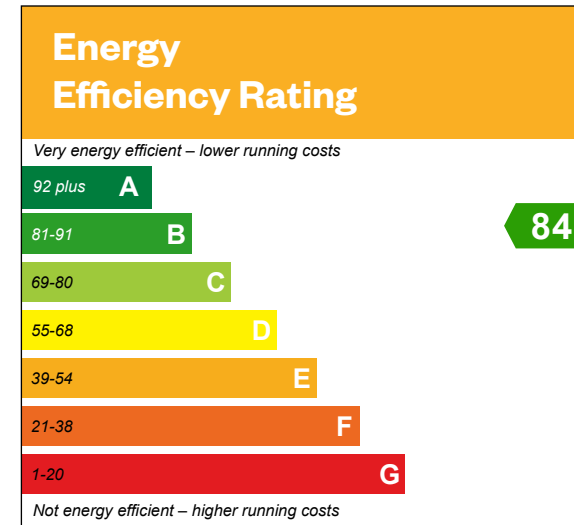
IMPORTANT NOTICE TO CUSTOMERS: The Consumer Protection from Unfair Trading Regulations 2008. Cala Homes (Chiltern) Limited operates a policy of continual product development and the specifications outlined in this brochure are indicative only. The computer generated images and photographs do not necessarily represent the actual finishings/elevation or treatments, landscaping, furnishings and fittings at this development. Information contained is accurate at date of publication on **XX**. See the main brochure for the full Consumer Protection statement. This is a Predicted Energy Assessment for properties that are incomplete. Once the property is completed, this rating will be updated and an official Energy Performance Certificate will be created for the property.

The Ickhurst

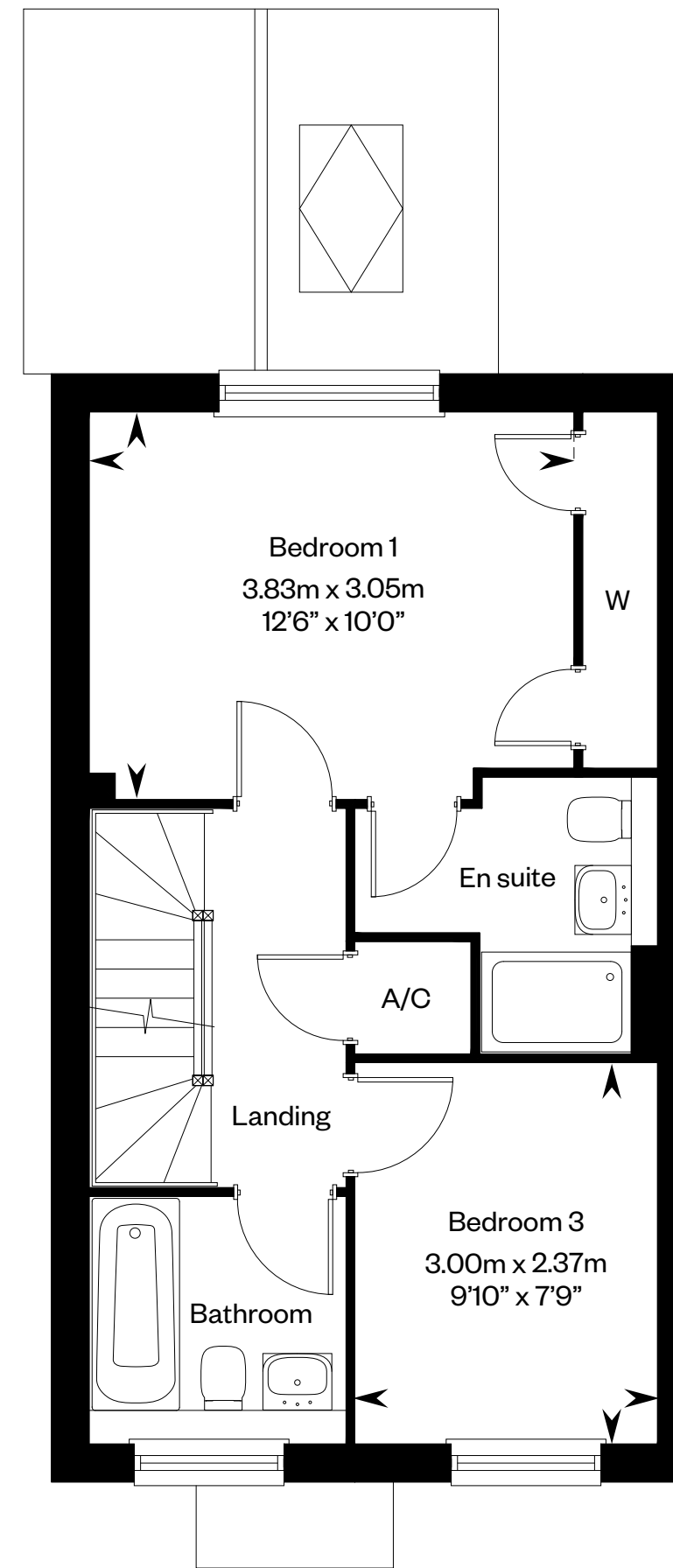
3 bedroom semi-detached home



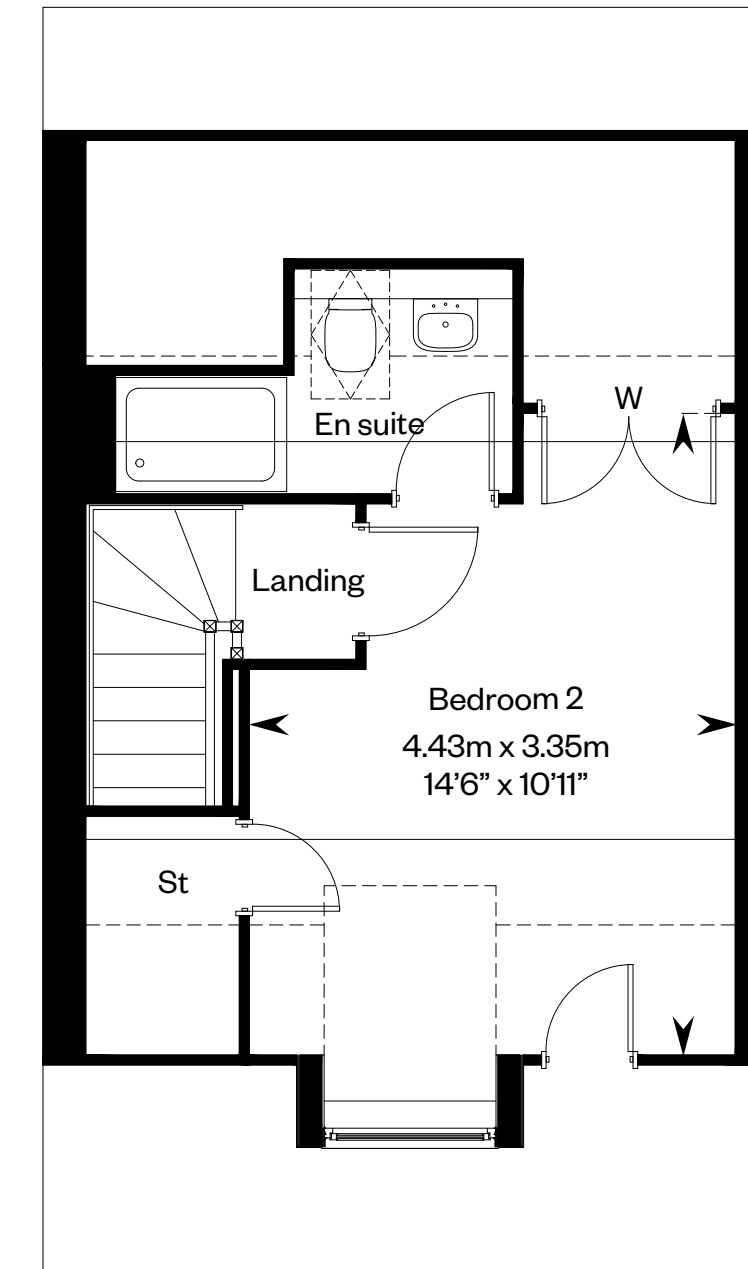
The Ickhurst



Ground floor



First floor



Second floor

Dotted line denotes reduced head height and Solid thin line denotes extent of full height ceiling.
Please ask your Sales Consultant for further details. ST: Store cupboard. W: Wardrobe. A/C: Airing cupboard. ☐: Roof light.

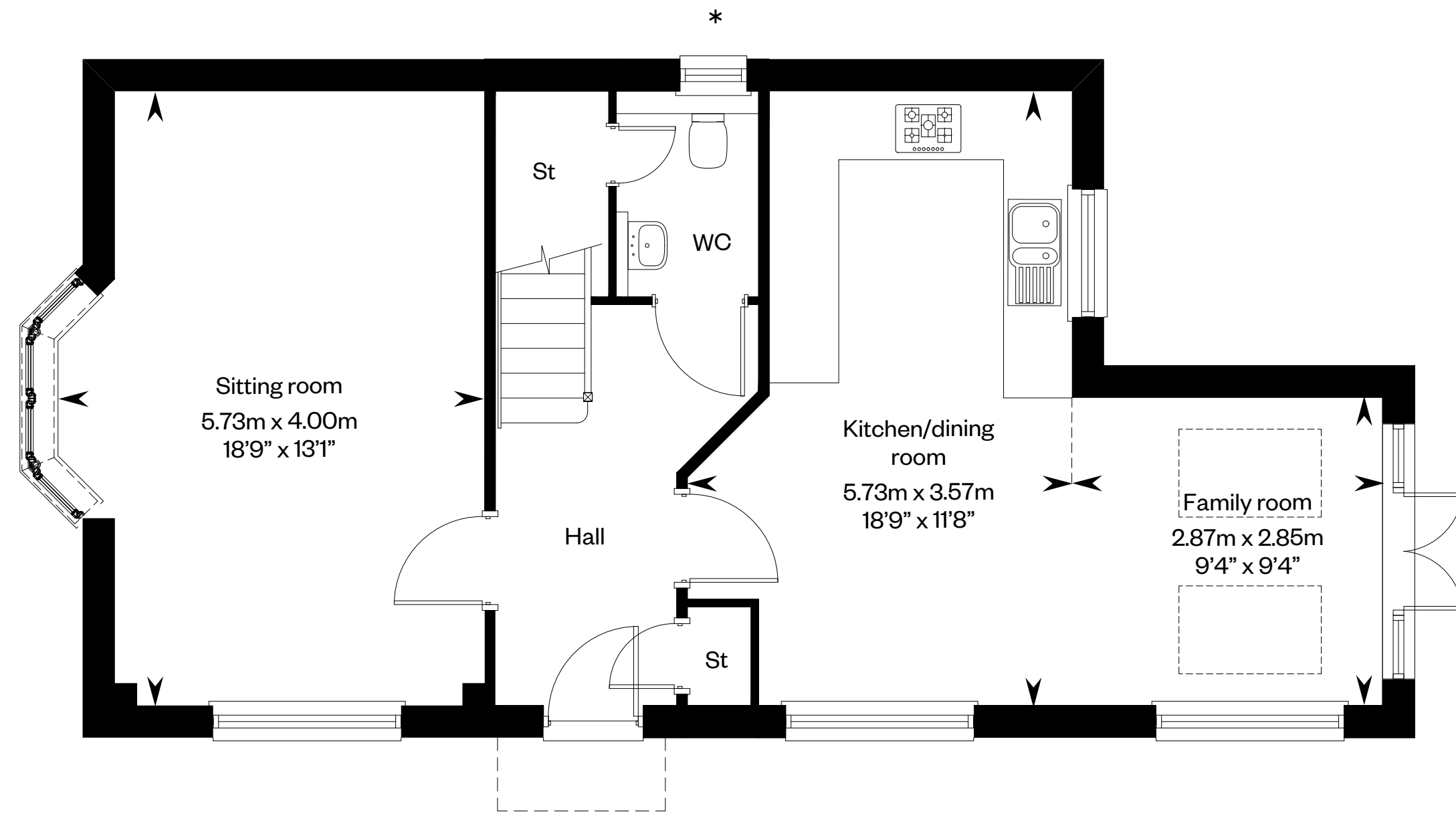
IMPORTANT NOTICE TO CUSTOMERS: The Consumer Protection from Unfair Trading Regulations 2008. Cala Homes (Chiltern) Limited operates a policy of continual product development and the specifications outlined in this brochure are indicative only. The computer generated images and photographs do not necessarily represent the actual finishings/elevation or treatments, landscaping, furnishings and fittings at this development. Information contained is accurate at date of publication on **XX**. See the main brochure for the full Consumer Protection statement. This is a Predicted Energy Assessment for properties that are incomplete. Once the property is completed, this rating will be updated and an official Energy Performance Certificate will be created for the property.

The Kiswick

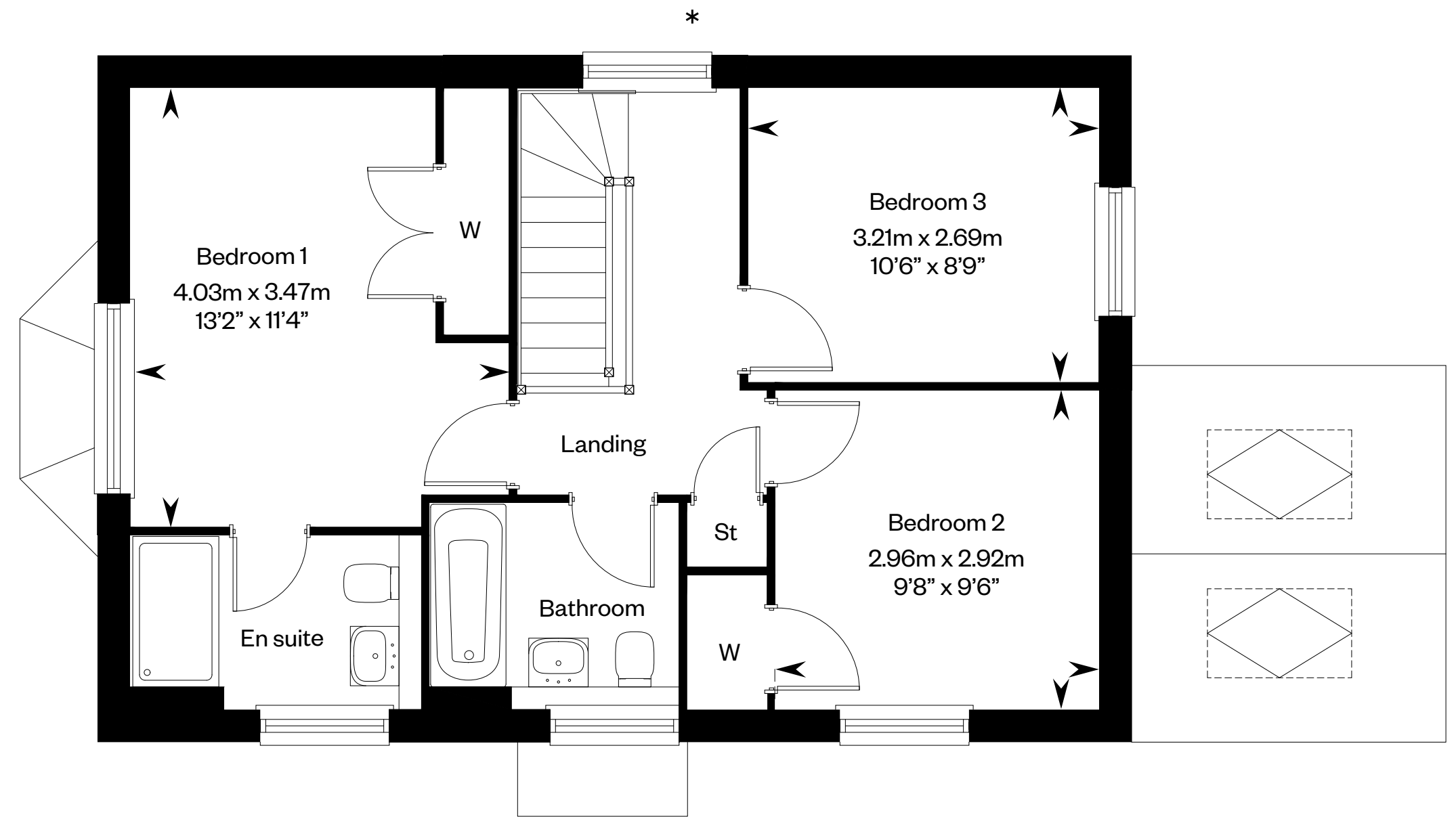
3 bedroom detached/semi-detached/end terraced home



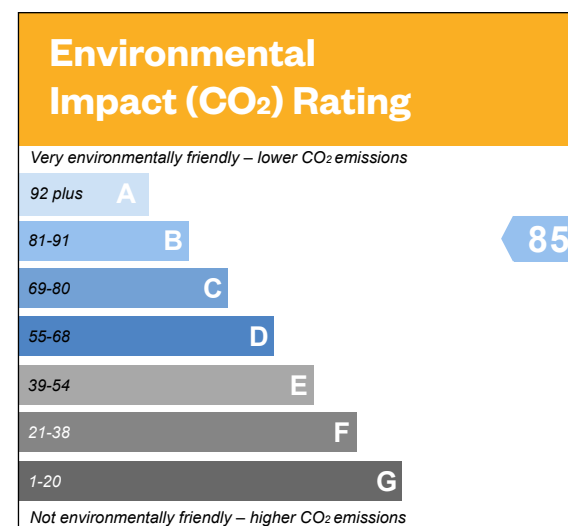
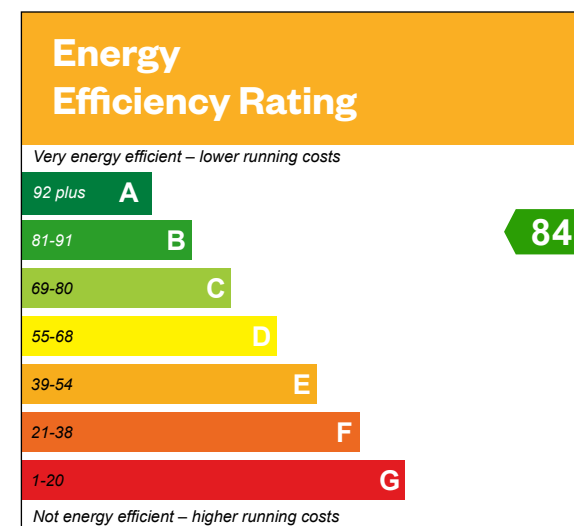
The Kiswick



Ground floor



First floor



Please ask your Sales Consultant for further details. *Window to Plots 45, 58 & 63 only. ST: Store cupboard. W: Wardrobe. ☒ Roof light.

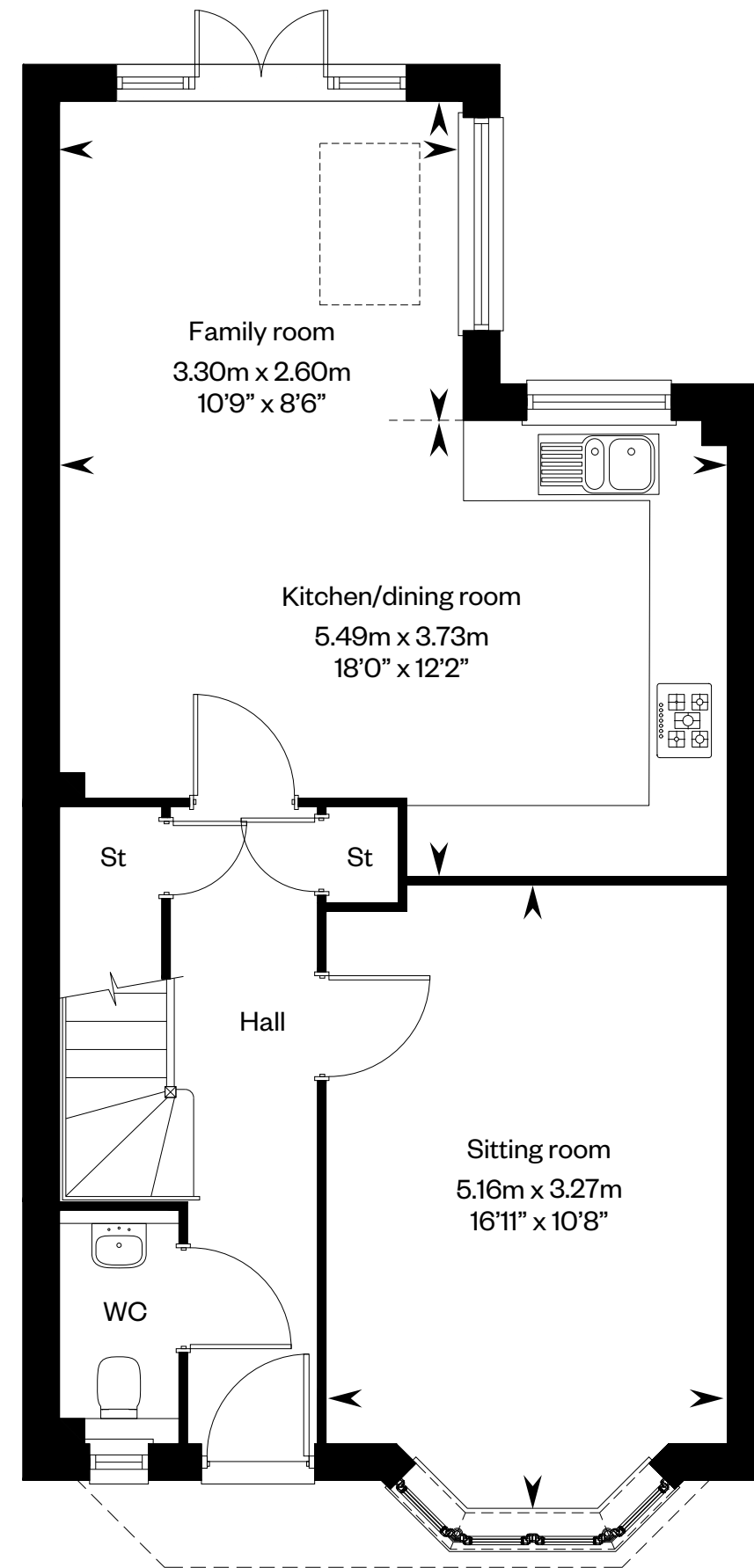
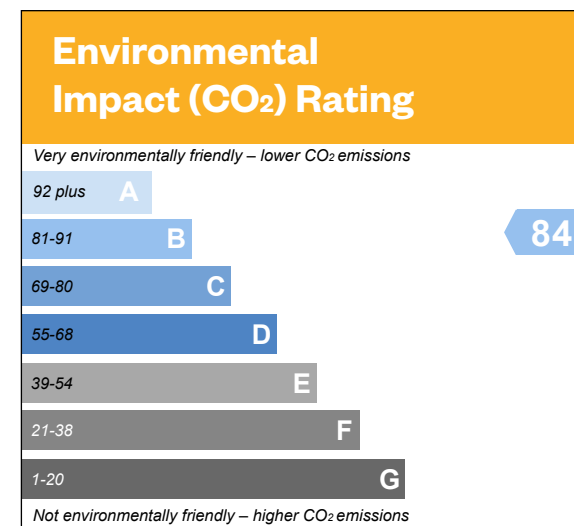
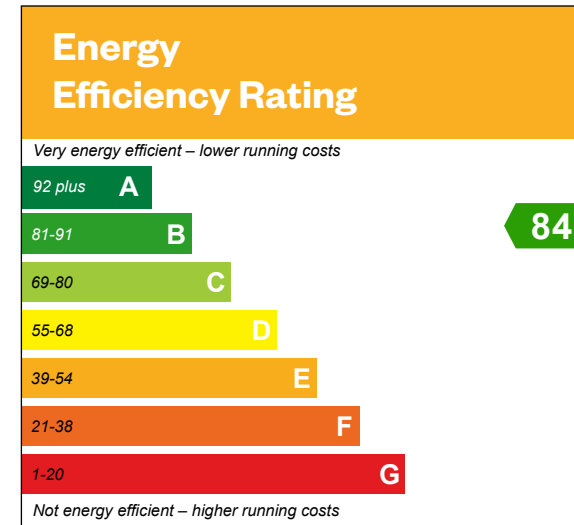
IMPORTANT NOTICE TO CUSTOMERS: The Consumer Protection from Unfair Trading Regulations 2008. Cala Homes (Chiltern) Limited operates a policy of continual product development and the specifications outlined in this brochure are indicative only. The computer generated images and photographs do not necessarily represent the actual finishings/elevation or treatments, landscaping, furnishings and fittings at this development. Information contained is accurate at date of publication on **XX**. See the main brochure for the full Consumer Protection statement. This is a Predicted Energy Assessment for properties that are incomplete. Once the property is completed, this rating will be updated and an official Energy Performance Certificate will be created for the property.

The Madeley

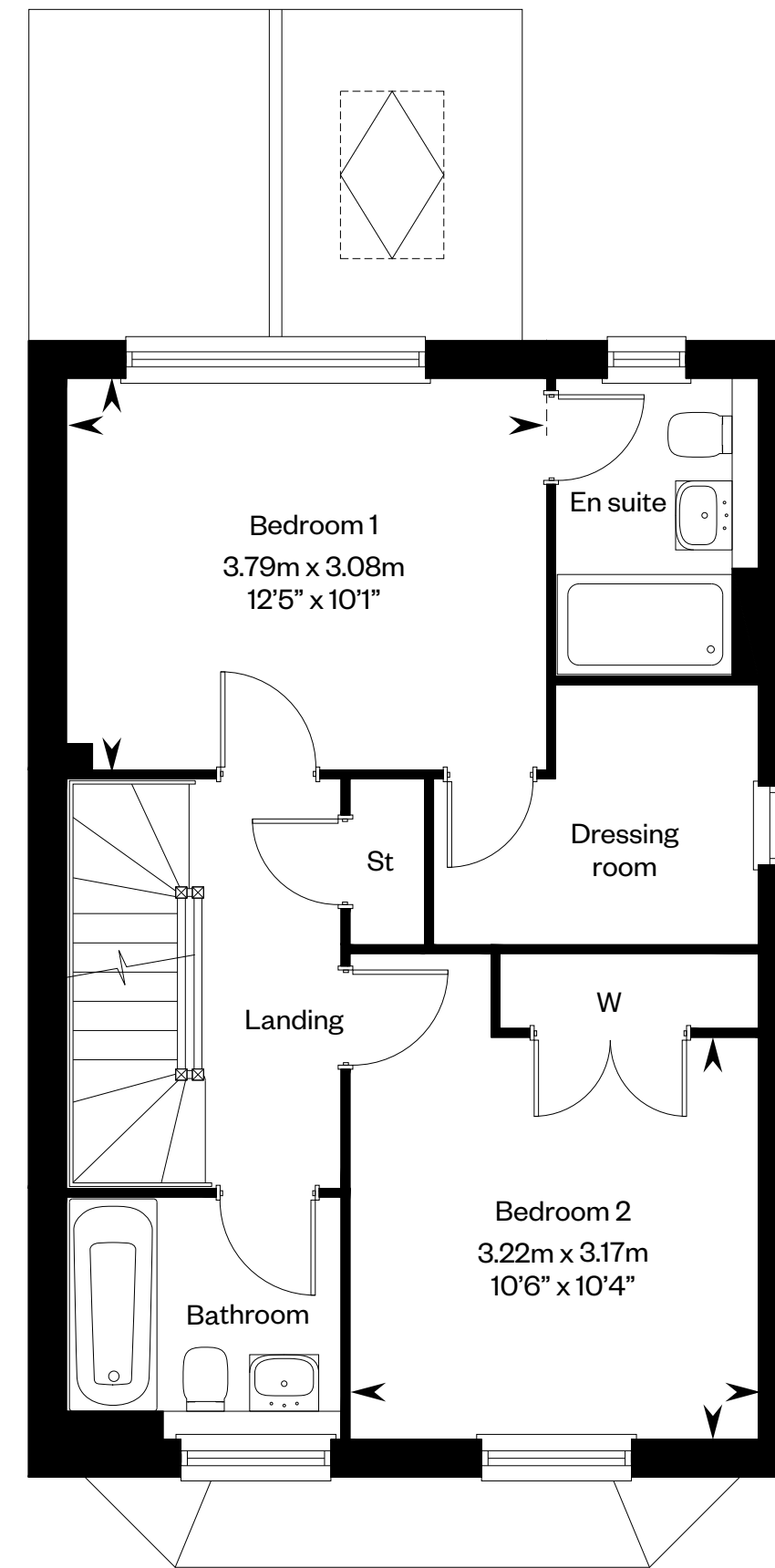
4 bedroom semi-detached home with garage



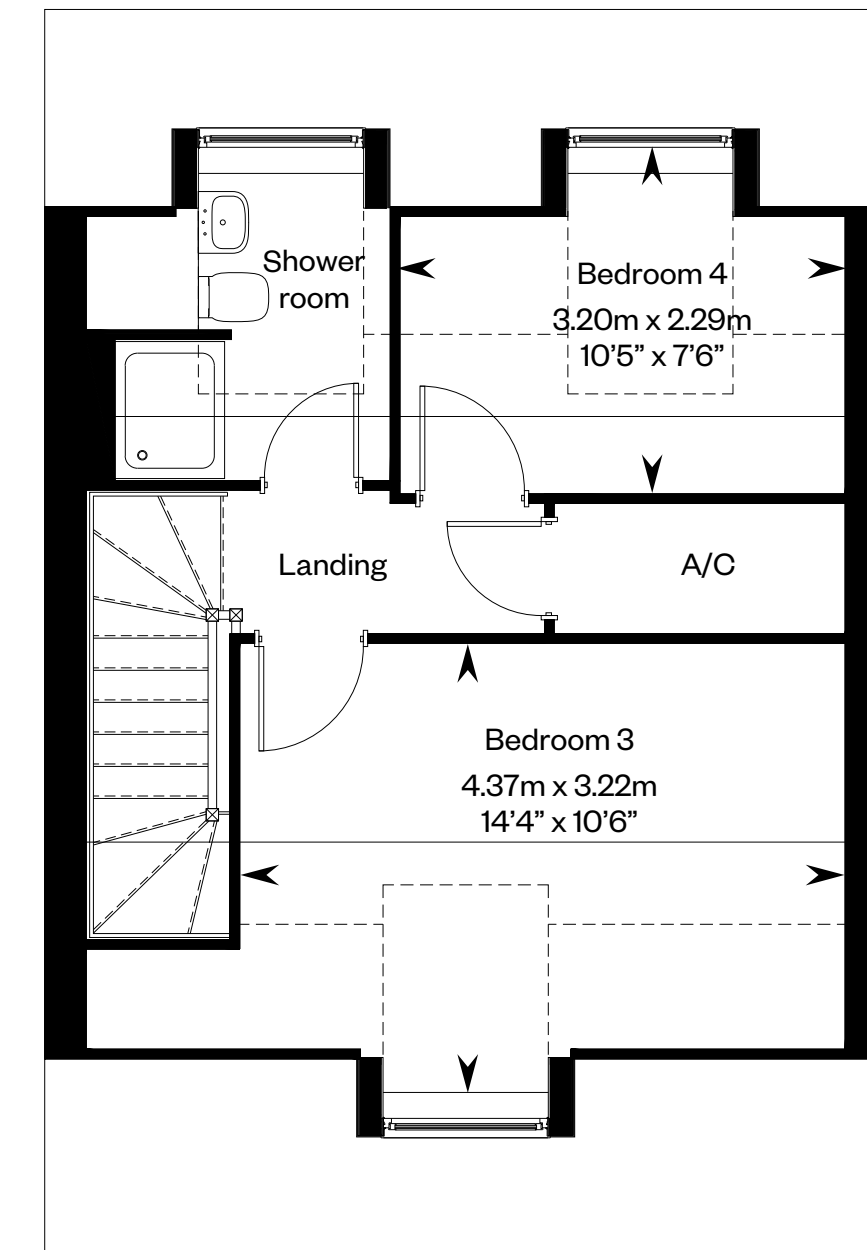
The Madeley



Ground floor



First floor



Second floor

Dotted line denotes head height or structure above and approximate position of 1800mm ceiling height and solid thin line denotes extent of full height ceiling. Please ask your Sales Consultant for further details. ST: Store cupboard. W: Wardrobe. A/C: Airing Cupboard. ☐: Roof light.

IMPORTANT NOTICE TO CUSTOMERS: The Consumer Protection from Unfair Trading Regulations 2008. Cala Homes (Chiltern) Limited operates a policy of continual product development and the specifications outlined in this brochure are indicative only. The computer generated images and photographs do not necessarily represent the actual finishings/elevation or treatments, landscaping, furnishings and fittings at this development. Information contained is accurate at date of publication on **XX**. See the main brochure for the full Consumer Protection statement. This is a Predicted Energy Assessment for properties that are incomplete. Once the property is completed, this rating will be updated and an official Energy Performance Certificate will be created for the property.

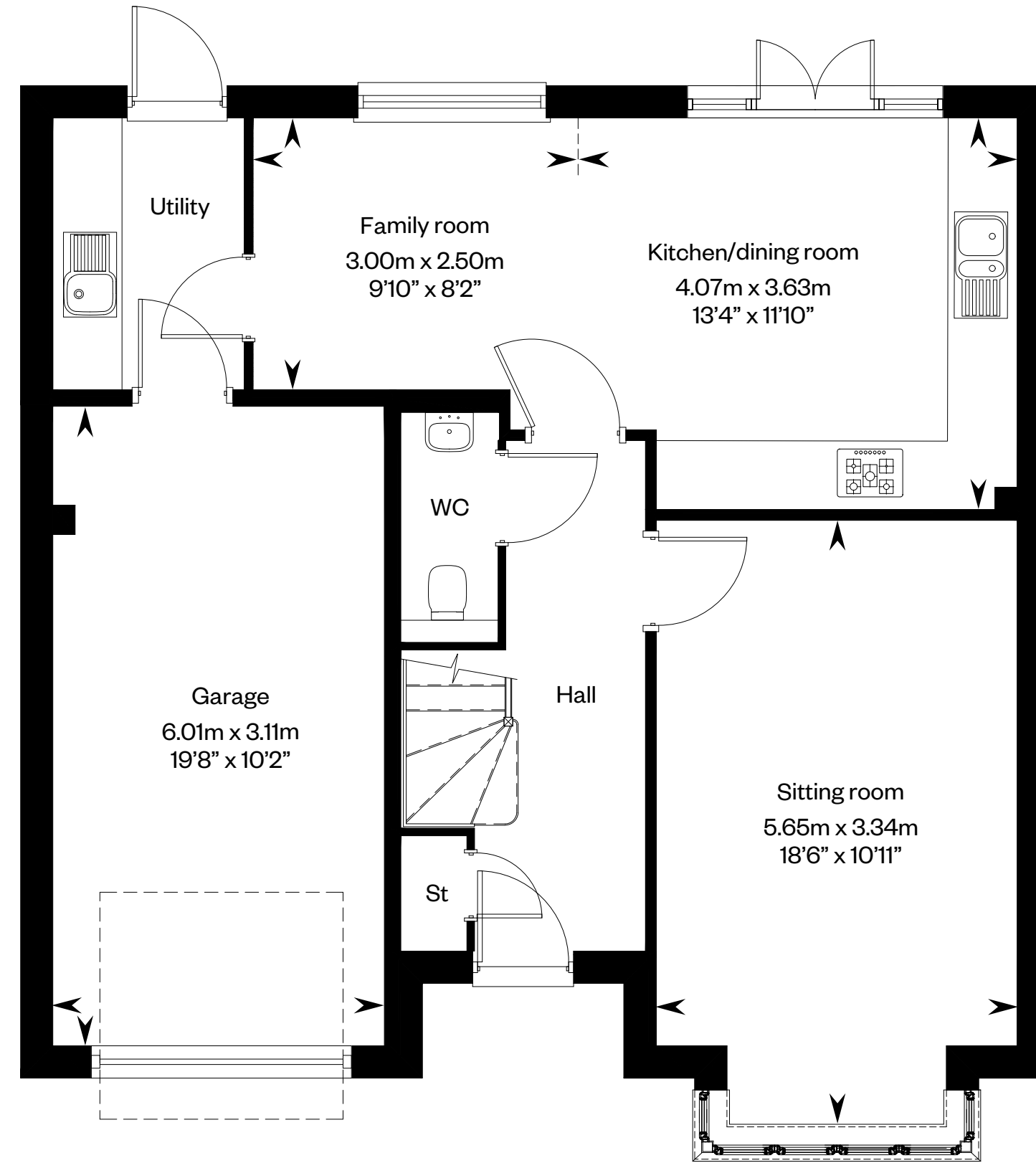
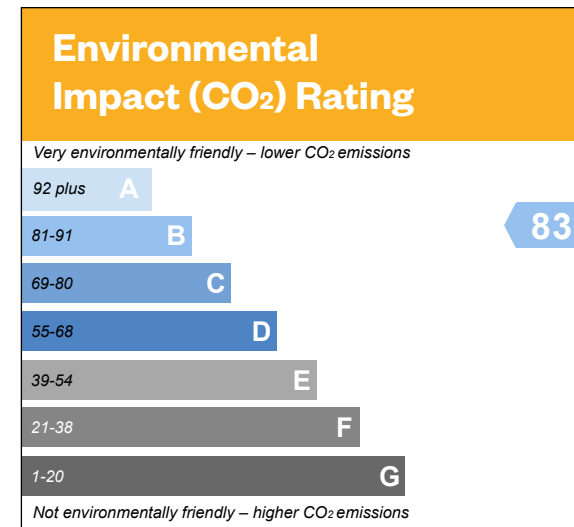
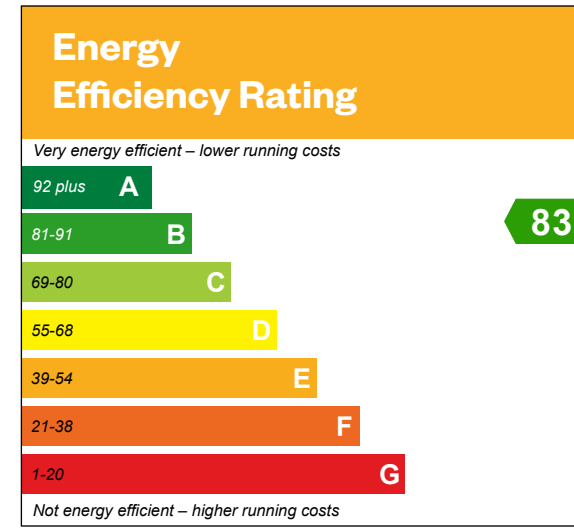
The Oak

4 bedroom detached home with integral garage

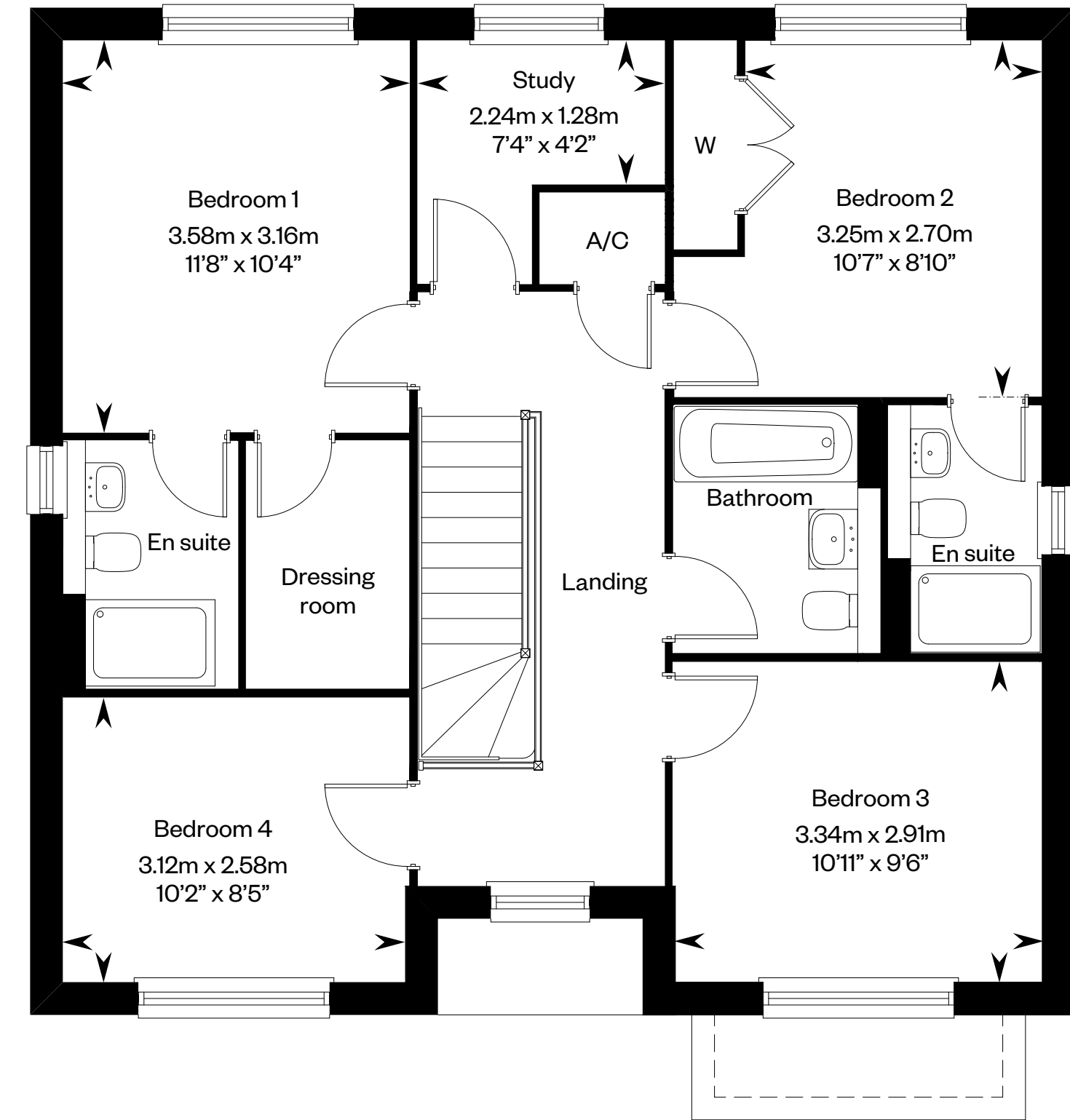


Computer generated image - The Oak

The Oak



Ground floor



First floor

Please ask your Sales Consultant for further details. St: Store cupboard. W: Wardrobe. A/c: Airing cupboard.

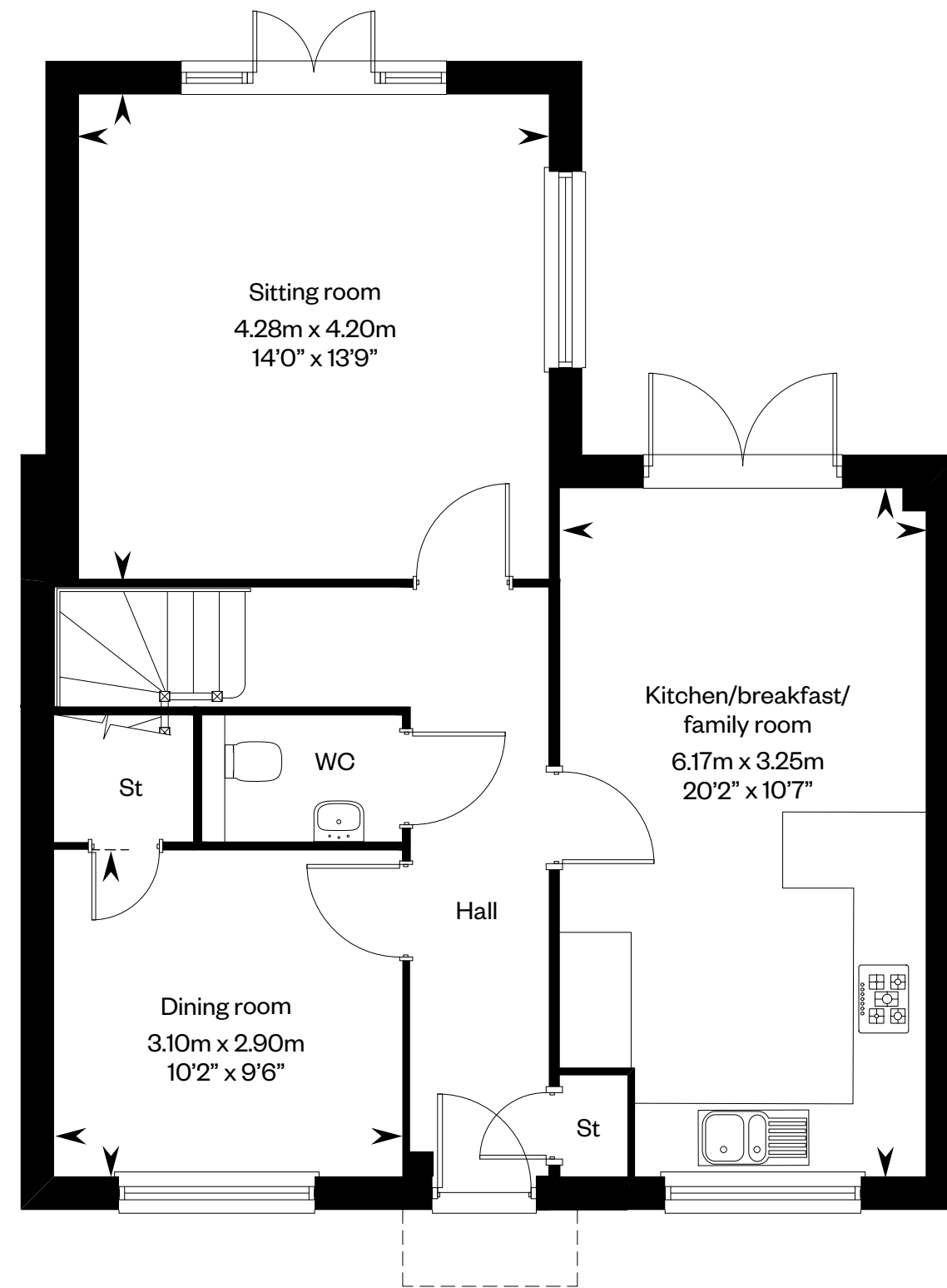
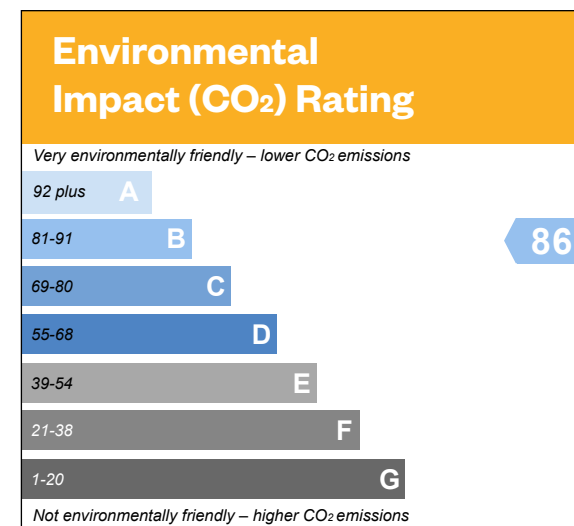
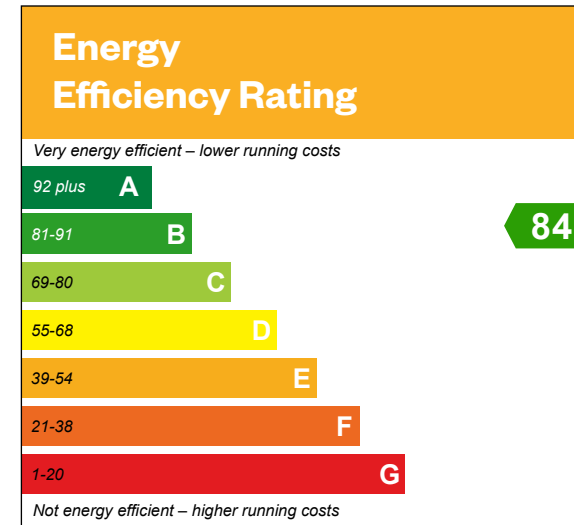
IMPORTANT NOTICE TO CUSTOMERS: The Consumer Protection from Unfair Trading Regulations 2008. Cala Homes (Chiltern) Limited operates a policy of continual product development and the specifications outlined in this brochure are indicative only. The computer generated images and photographs do not necessarily represent the actual finishings/elevation or treatments, landscaping, furnishings and fittings at this development. Information contained is accurate at date of publication on **XX**. See the main brochure for the full Consumer Protection statement. This is a Predicted Energy Assessment for properties that are incomplete. Once the property is completed, this rating will be updated and an official Energy Performance Certificate will be created for the property.

The Oatfield

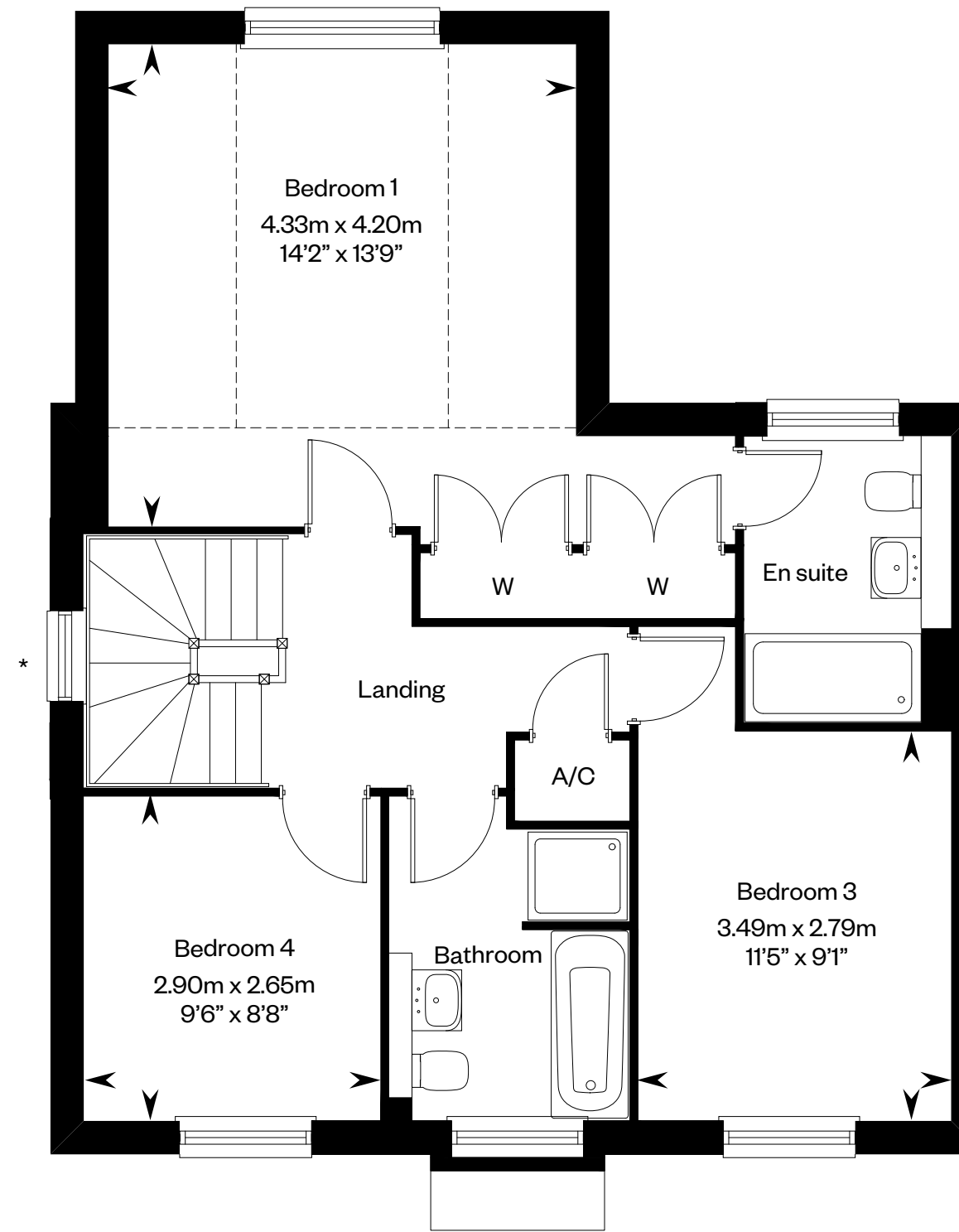
4 bedroom detached home with study and garage



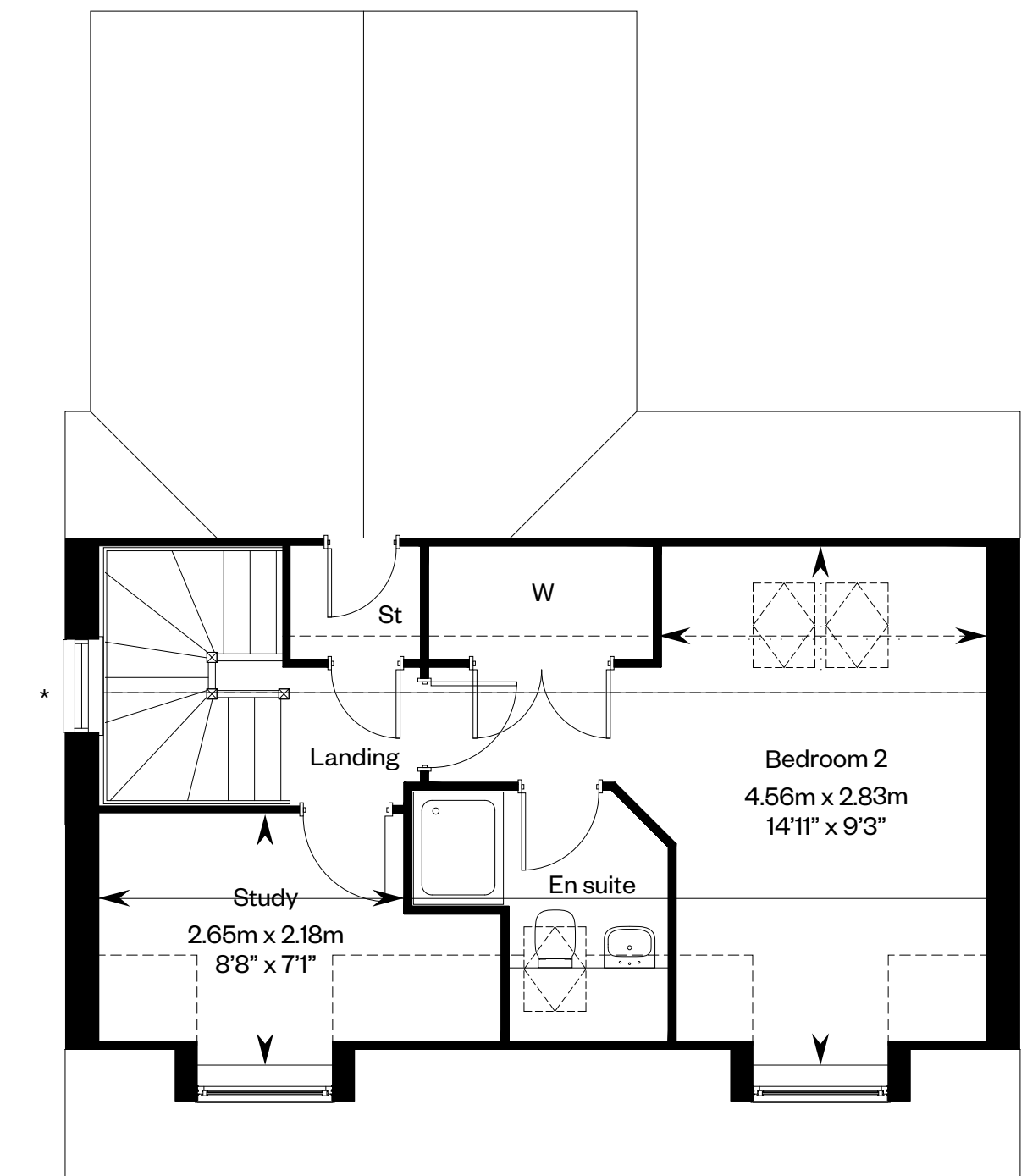
The Oatfield



Ground floor



First floor



Second floor

Dotted line denotes head height or structure above and approximate position of 1800mm ceiling height and Solid thin line denotes extent of full height ceiling. Please ask your Sales Consultant for further details. ST: Store cupboard. W: Wardrobe. A/C: Airing cupboard. ☐: Roof light.

IMPORTANT NOTICE TO CUSTOMERS: The Consumer Protection from Unfair Trading Regulations 2008. Cala Homes (Chiltern) Limited operates a policy of continual product development and the specifications outlined in this brochure are indicative only. The computer generated images and photographs do not necessarily represent the actual finishings/elevation or treatments, landscaping, furnishings and fittings at this development. Information contained is accurate at date of publication on **XX**. See the main brochure for the full Consumer Protection statement. This is a Predicted Energy Assessment for properties that are incomplete. Once the property is completed, this rating will be updated and an official Energy Performance Certificate will be created for the property.

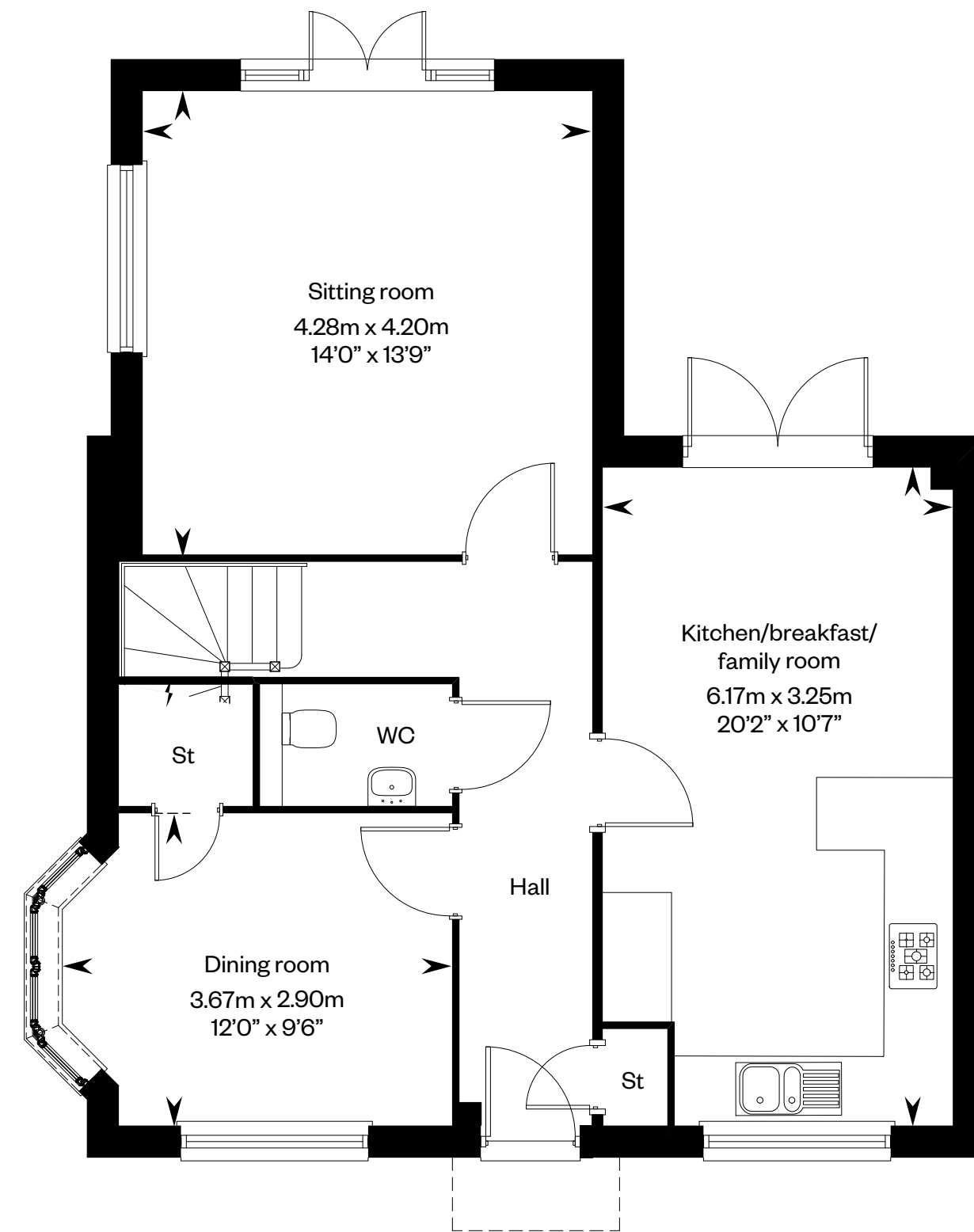
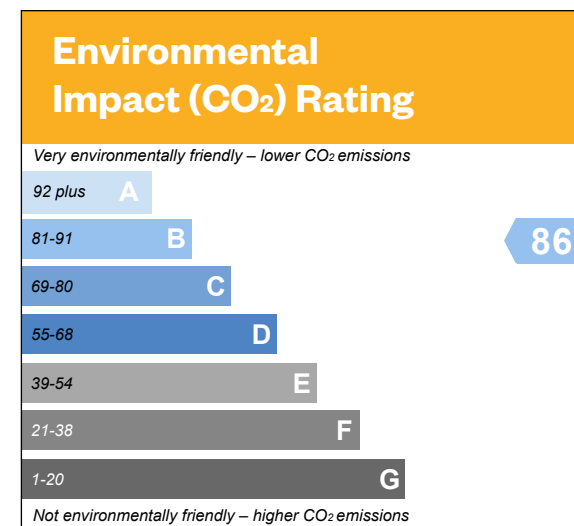
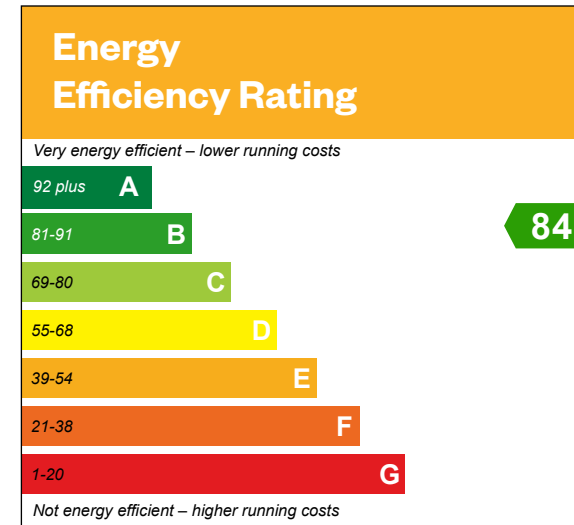
The Oatvale

4 bedroom detached home with study and garage

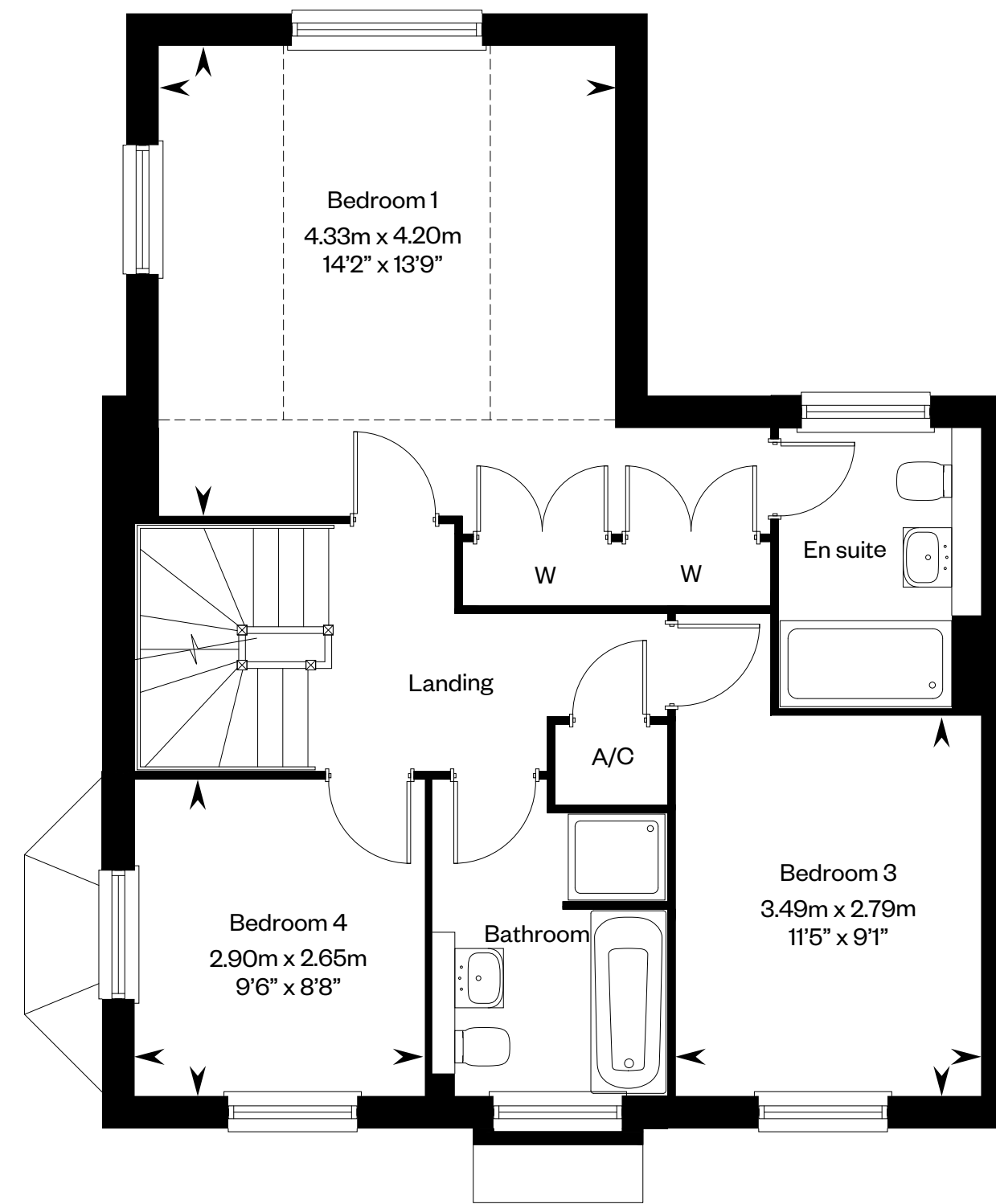


Computer generated image - The Oatvale

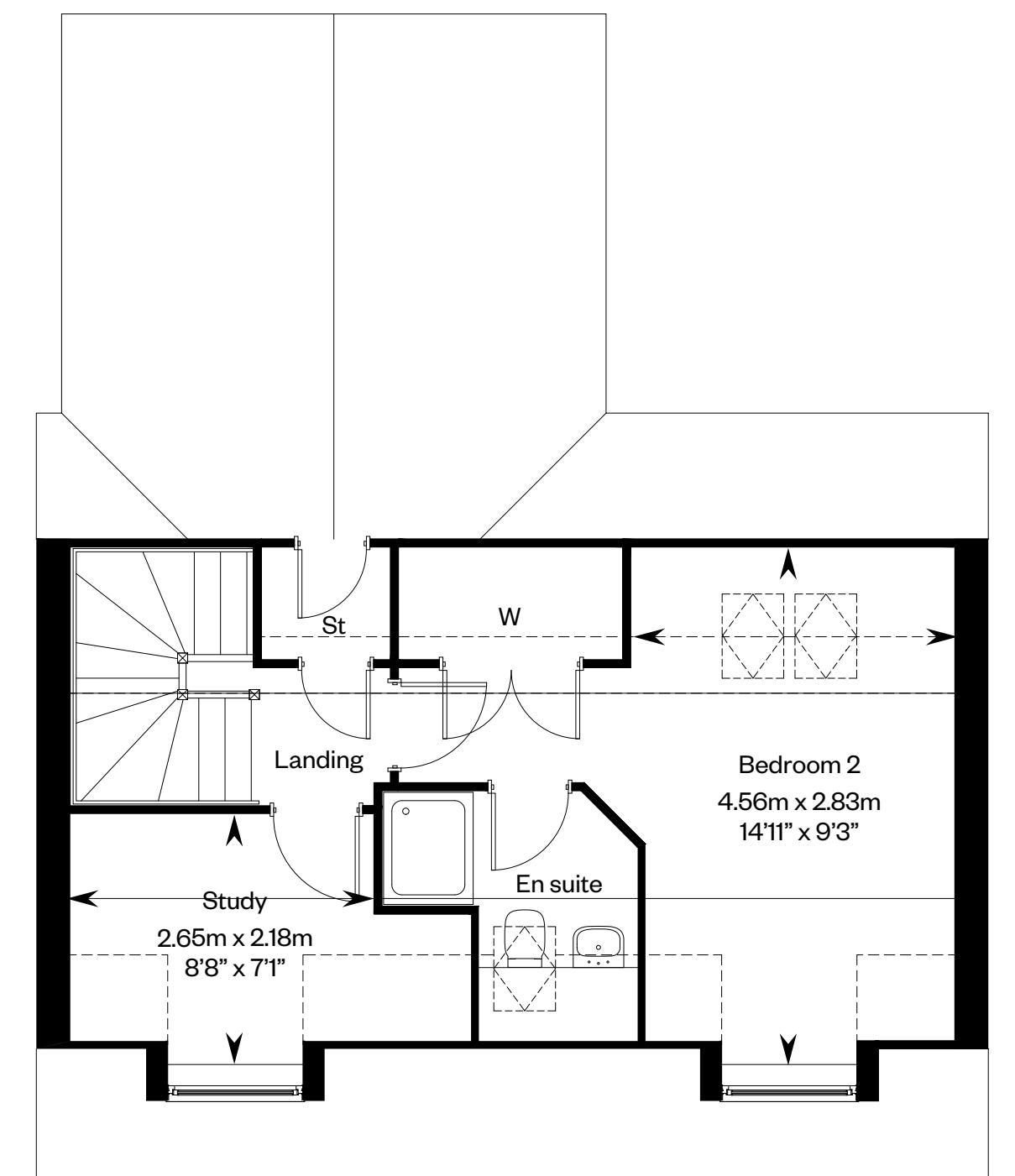
The Oatvale



Ground floor



First floor



Second floor

Dotted line denotes head height or structure above and approximate position of 1800mm ceiling height and Solid thin line denotes extent of full height ceiling. Please ask your Sales Consultant for further details. ST: Store cupboard. W: Wardrobe. A/C: Airing cupboard. ☐: Roof light.

IMPORTANT NOTICE TO CUSTOMERS: The Consumer Protection from Unfair Trading Regulations 2008. Cala Homes (Chiltern) Limited operates a policy of continual product development and the specifications outlined in this brochure are indicative only. The computer generated images and photographs do not necessarily represent the actual finishings/elevation or treatments, landscaping, furnishings and fittings at this development. Information contained is accurate at date of publication on **XX**. See the main brochure for the full Consumer Protection statement. This is a Predicted Energy Assessment for properties that are incomplete. Once the property is completed, this rating will be updated and an official Energy Performance Certificate will be created for the property.



Farendon Fields

House specification

2, 3 & 4 bedroom homes



Stock photography

Desirable in every detail

The finishing touches, unexpected flourishes and innovative features. Designer kitchens with desirable technology built-in, for showing off your culinary flair. Sleek family bathrooms and en suites with quality specification sanitaryware, for indulging in some well-deserved pampering. With every home comfort considered for energy efficient and low maintenance living, each aspect of your home is beautifully designed and built to an exacting standard; because when you look for premium quality, it's the little things that make all the difference.

2 & 3 bed homes	4 bed homes	
		Kitchen*
✓	✓	Professionally designed kitchen with quality units and laminate work surfaces
✓	✓	1.5 single bowl inset sink with single drainer and chrome mixer tap
✓	✓	Bosch built-in single oven
	✓	Combination microwave oven
✓		Bosch 4 ring 600 touch control induction hob
	✓	Bosch 4 ring 800 touch control induction hob
✓	✓	Fully integrated, Bosch appliances, comprising fridge freezer, dishwasher and washer/dryer (where no utility room)

2 & 3 bed homes	4 bed homes	
		Utility (The Oak only)^
	✓	Laminate work surfaces
	✓	Space for two appliances
	✓	Single bowl inset sink with single drainer and chrome mixer tap

2 & 3 bed homes	4 bed homes	
		Family bathroom, en suites, shower room^ and cloakroom
✓	✓	Roca sanitaryware
	✓	Vanity unit to family bathroom and bedroom one en suite
✓	✓	Thermostatic shower
✓	✓	Full height tiling around bath with thermostatically controlled shower and glass shower door where applicable (except when there is a separate shower cubicle)
✓	✓	Half height tiling around bath with low level handheld shower attachment where applicable
✓	✓	Heated chrome towel rail*
✓	✓	Shaver socket to family bathroom and en suites

2 & 3 bed homes	4 bed homes	
		Media and Communication
✓	✓	TV/FM/DAB sockets to kitchen/breakfast/family room^, sitting room, bedrooms and other reception rooms
✓	✓	Sky and Freeview television distribution system with a TV socket following purchase and installation of suitable equipment
✓	✓	Openreach with infrastructure for BT Fibre (and other providers on the network) with additional Hyperoptic connection for immediate broadband
✓	✓	CAT6 data cabling
✓	✓	Telephone sockets to sitting room and study^ or smallest bedroom

*Design is subject to change. Please ask your Sales Consultant for more information. ^To selected plots only, please see floor plans for details. ^^ Proportions may vary, please refer to Sales Consultant for more information.

† Not all domestic appliances have an EU energy label. Please refer to Sales Consultant.

2 & 3 bed homes	4 bed homes	
Heating, Lighting and internal finishes		
✓	✓	Solid ground floor for a warmer, quieter home and engineered timber joists to upper floors
✓	✓	Zoned gas fired central heating
	✓	Google Nest Learning Thermostat
✓	✓	Provision for electric fire only
	✓	Dressing room (Madeley & Oak only)
✓	✓	Built-in wardrobes (please see floor plans for details)
✓	✓	Recessed downlights to kitchen/breakfast room, family room, utility room, family bathroom, cloakroom and en suites. Pendant lighting to other rooms
✓	✓	Amtico flooring to kitchen/breakfast room, utility room, family bathroom, en suites and cloakroom

2 & 3 bed homes	4 bed homes	
Environmental details		
✓	✓	Energy monitors
✓	✓	Double glazed PVCu windows (and French doors) providing a high level of thermal insulation and reduced heat loss
✓	✓	Roof trusses designed to take additional load to accommodate PV Panels installation
✓	✓	C and D-rated kitchen appliances to reduce water and energy use [†]
✓	✓	Dual flush mechanism to toilets to reduce water use
✓	✓	High levels of insulation within roof spaces and external cavity walls to limit heat loss in the winter and reduce heat gain in the summer
✓	✓	Dusk-to-dawn sensors to primary external lighting to reduce electricity usage
✓	✓	Low energy lighting to all homes ^{††}
✓	✓	Significant amounts of recycling of waste materials and packaging during the construction of each home to reduce the environmental impact of the development

2 & 3 bed homes	4 bed homes	
Security and External details		
	✓	Nest Hello Smart door bell with video
✓	✓	Provision for electrical car charging points
✓	✓	Cycle racks wall mounted to garages. Where the plot does not have a garage, cycle stands located in rear garden
✓	✓	Outside lights to front, rear and side doors. Recessed downlights to porch where applicable
✓	✓	Dusk-to-dawn sensor lights outside front door
✓	✓	Multi-point locking system to front door
✓	✓	Spur fitted for wireless alarm
	✓	Spur fitted for electric garage door
	✓	Outside electrical point to rear patio
✓	✓	Outside water tap
✓	✓	Landscaped front garden and rotovate to rear

*Design is subject to change. Please ask your Sales Consultant for more information. ^To selected plots only, please see floor plans for details. †† Proportions may vary, please refer to Sales Consultant for more information.

† Not all domestic appliances have an EU energy label. Please refer to Sales Consultant.



Farendon Fields,
Off Old Rickyard Piece,
Weston Turville, HP22 5ZD

For more information 

CALA.CO.UK



Stock photography