



189 Duck Lane, St. Neots, PE19 2EG

- Mid terraced family home
- Three bedrooms
- Walking distance to Train Station
- Primary and Secondary Schools nearby
- Less than a mile from Town Centre
- Gas radiator heating

Full Description

A spacious three bedroom mid terraced family home within walking distance of St Neots Railway Station and local primary and secondary schools. The accommodation comprises living room, 18ft kitchen/dining room and WC on the ground floor. The first floor has three good sized bedrooms plus a family bathroom. The property benefits from gas radiator heating and UPVC windows and doors. Externally, there are front and rear gardens. Viewing highly recommended!

LIVING ROOM

18' 7" x 12' 9" (5.66m x 3.89m)

UPVC entrance door leading to living room. UPVC window to front. Stairs to first floor. Storage cupboard housing gas boiler. Radiator. Door to kitchen/dining room.

KITCHEN / DINING ROOM

18' 7" x 11' 6" (5.66m x 3.51m)

Fitted kitchen comprising work surfaces with complementary drawers and cupboards under. Wall mounted cupboards. One and a half bowl sink with mixer tap and tiled splash backs. Electric cooker point with extractor over. Built in fridge/freezer. Plumbing for washing machine and dishwasher. Radiator. UPVC door to rear. Door to rear lobby.

REAR LOBBY

UPVC window to side. Door to WC.

WC

Two piece white suite comprising WC and pedestal wash hand basin. Tiled splash backs. Radiator. UPVC window to side.

LANDING

Airing cupboard. Doors to bedrooms and bathroom.

BEDROOM ONE

14' 1" x 10' 5" (4.29m x 3.18m)

UPVC window to front. Radiator. Loft access.

BEDROOM TWO

10' 5" x 10' 2" (3.18m x 3.1m)

UPVC window to rear. Radiator.

BEDROOM THREE

10' 8" x 7' 11" (3.25m x 2.41m)

UPVC window to front. Radiator.



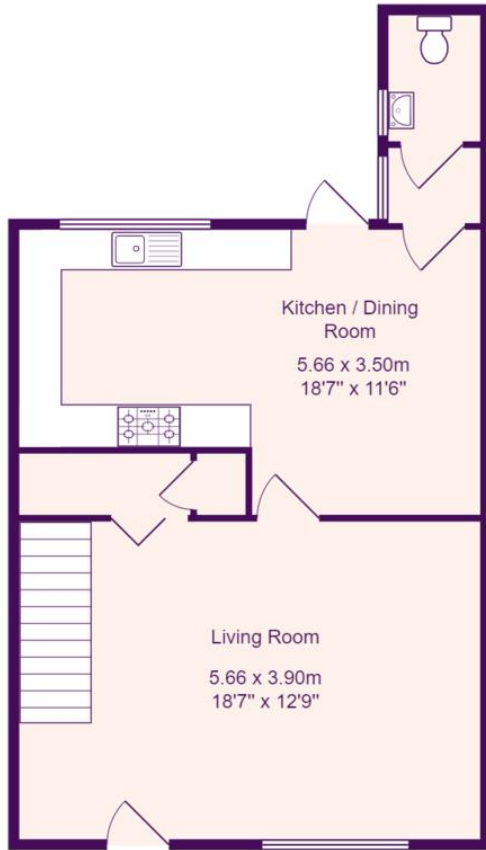
BATHROOM

Three piece suite comprising low level WC, pedestal wash hand basin and panelled bath with shower over. Tiled splash backs. Radiator. UPVC window to rear.

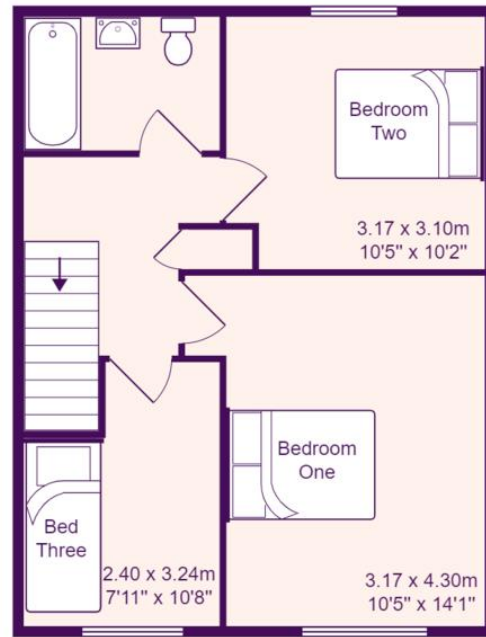
REAR GARDEN

Private enclosed rear garden mainly laid to lawn with flower and shrub borders. Patio area. Outside water supply. Garden shed plus brick built storage cupboard. Gated access to rear.





Ground Floor



First Floor

Total Area: 87.6 m² ... 943 ft²

All measurements are approximate and for display purposes only