

**Lambert Road, SW2**

2 bedroom flat - purpose built to let

**£554 Per Week**

Furnished

## Property Details

Keating Estates are proud to present to market this beautifully presented two-bedroom Victorian maisonette with a separate study, located on an attractive residential street at the end of a quiet cul-de-sac, nestled just off vibrant Brixton Hill. Offering over 1,000 square feet of internal living space, this spacious property is a rare find, boasting generous proportions throughout and access to a South-facing balcony.

This light and airy maisonette benefits from its own entrance, with stairs leading up to the first-floor landing. Tucked away at the rear is an eat-in kitchen—a fantastic size with modern appliances and ample space for a dining table, ideal for those who enjoy entertaining. At the front, a stylish reception room comes complete with a square bay window and high ceilings that enhance the sense of space and light.

Adjacent to the reception room is a large double bedroom and a functional family bathroom. Also on this floor is a separate study—perfect for those working from home or in need of a quiet workspace.

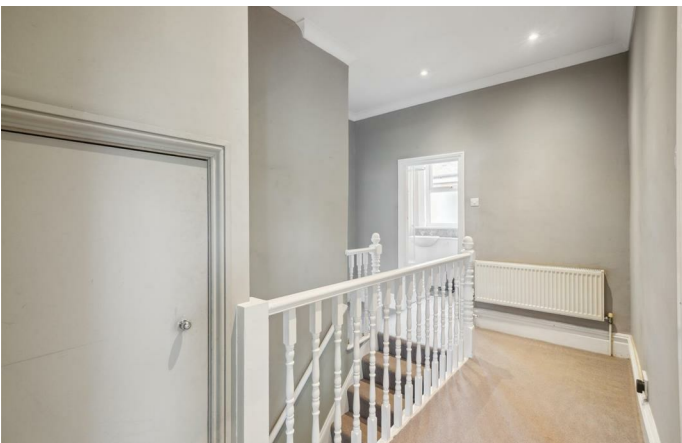
Upstairs, the second floor features a comfortable loft-style bedroom with great ceiling height, thanks to a full-width dormer. This space includes a large walk-in closet, additional eaves storage, and an

## Features

- Two double bedrooms
- Two bathrooms
- Separate study
- Stylish split-level apartment
- Over 1000 square feet of internal living space
- Access to a South facing balcony
- Desirable road equidistant to Brixton
- Walking distance to Northern and Victoria tube lines
- Own front door
- Victorian maisonette

Council tax band      EPC rating E (53)





Lambert Road, SW2

**Lambert Road, SW2**

**3 Bedroom Flat**

APPROXIMATE GROSS INTERNAL AREA :

**1049 SQ FT / 97.49 SQ M**



While we try our very best, floor plans are produced as a guide only and we take no responsibility for the precise accuracy with which any property is represented.

Lambert Road, SW2

