



## Cubitt Terrace, Clapham, SW4

3 bedroom house for sale

£925,000

Freehold

### Property Details

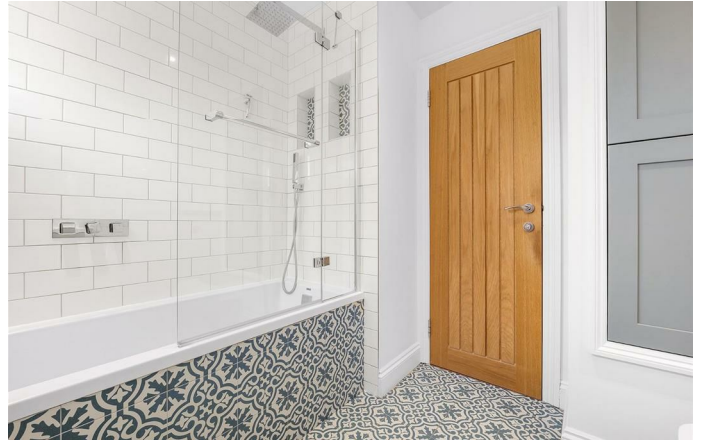
A wonderful three bedroom Smart Home with a South-East facing garden. Fully renovated just three years ago, including a ground floor extension, this beautiful home has been lovingly upgraded into a cutting edge Smart Home run via Alexa. The expansive ground floor is thoughtfully configured with attractive solid wood parquet flooring sweeping through the room. The contemporary kitchen is well-equipped with mod cons and a Quooker tap whilst the large island features a hob with underfloor extraction, creating a practical yet sociable family hub. Bathed in light from a large skylight, the lounge has room for a capacious sofa whilst still leaving space for a more formal dining table option with garden views. Bi-fold doors allow a seamless transition to the South-East facing private garden. This landscaped haven is bordered by palm trees and the positioning of the surrounding buildings add additional privacy to this sun-trap. Outdoor sockets and lighting extend the usage into the evenings. Upstairs, the three bedrooms are bright and neutrally presented with wooden flooring adding a homely ambience. The tasteful bathroom has a luxurious bathtub with overhead shower, plus storage and underfloor heating for toasty toes.

Council tax band D    EPC rating C (76)

### Features

- Three bedrooms
- South-East facing landscaped garden
- Freehold house
- Renovated and extended in 2021
- Alexa run Smart Home
- Beautifully presented
- Upmarket Clapham Old Town a four-minute walk
- Clapham High street a six-minute stroll
- Clapham Common just eight-minutes away
- Northern Line and Overground

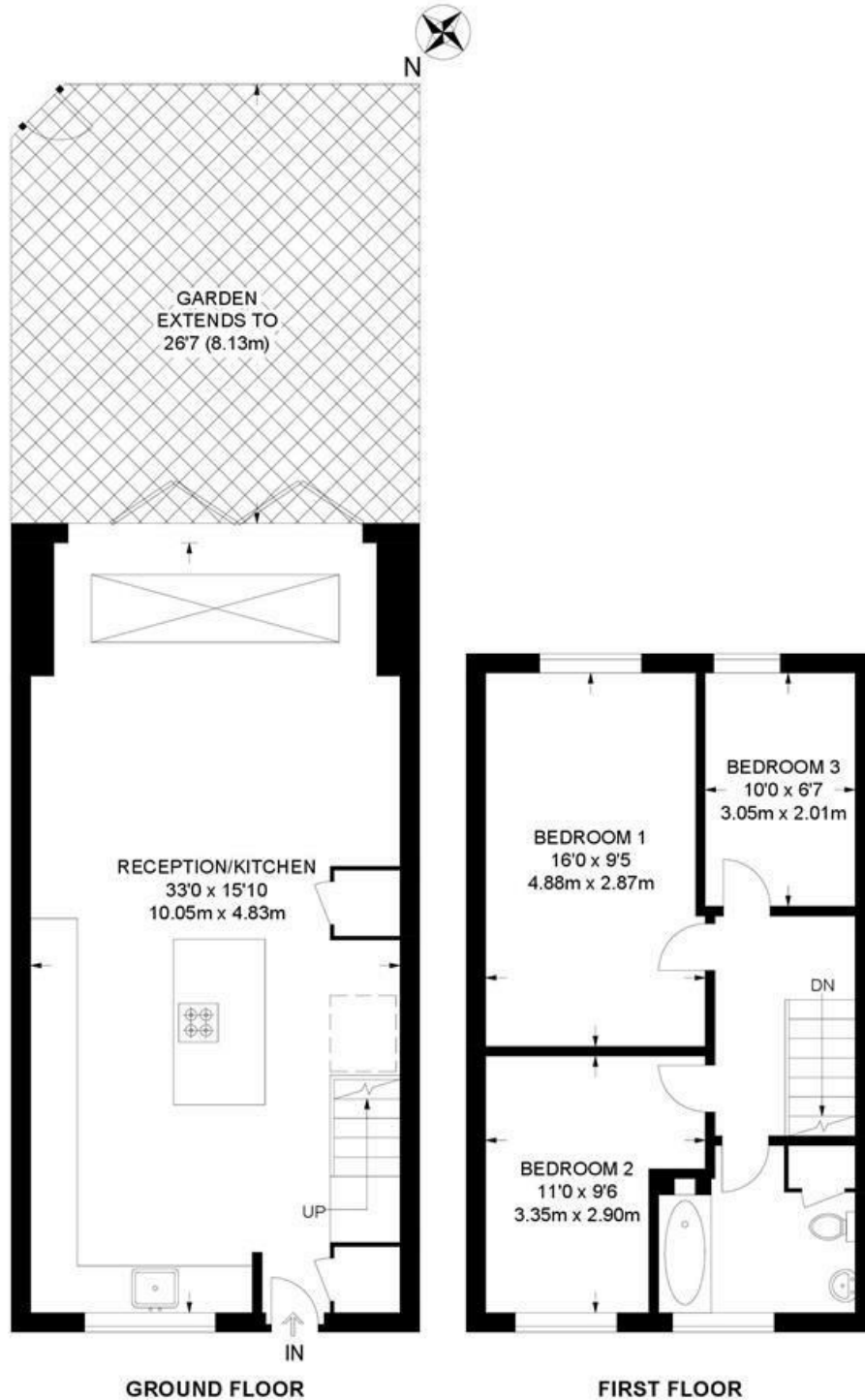




Cubitt Terrace, Clapham, SW4

**Cubitt Terrace, SW4**  
**3 Bedroom House**

APPROXIMATE GROSS INTERNAL AREA: **956 SQ FT / 88.8 SQ M**



While we try our very best, floor plans are produced as a guide only and we take no responsibility for the precise accuracy with which any property is represented.

Cubitt Terrace, Clapham, SW4

