



## Waterside Point, Wandsworth, SW11

3 bedroom flat - purpose built for sale

£1,995,000

Leasehold

### Property Details

A rare to market three double bedroom apartment with two private balconies, and Thames views. This incredible home is moments from Battersea Park, within an exclusive riverside development, complete with two allocated underground parking spaces, concierge and lift. Nestled over the second floor this well-appointed apartment is ready to move into, adding your own stamp over time. A grand entrance hall is lined with mirrors and space for artwork, plus cloakrooms and a W.C. Double doors open into the spacious, breath-taking reception, with floor to ceiling angled windows flooding the room with light. An enchanting room for hosting dinner or unwinding in front of the fire. Glass doors lead out to the first private terrace, from which to drink in views of the Thames with Chelsea beyond. The separate kitchen has generous storage within contemporary cabinetry, finished with sleek wrap-around worktops. All three bedrooms are doubles, each with en-suite bathrooms plus fitted wardrobes. The principle bedroom is particularly opulent, boasting sizeable proportions, a walk-through wardrobe, four-piece en-suite and the second private terrace, ideal for a morning coffee with the papers.

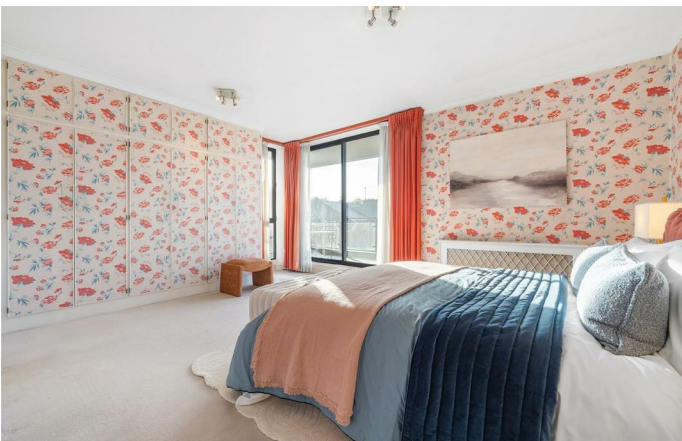
Council tax band H

EPC rating B (83)

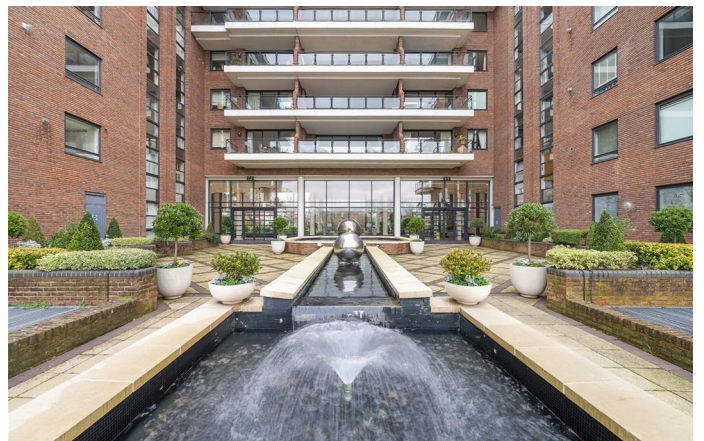
### Features

- Three double bedrooms
- Three bathrooms plus WC
- Two private terraces plus residents' grounds
- Almost 1700 square feet of internal space
- Riverside gated apartment
- Views of the Thames
- Concierge and lift
- Allocated underground parking for two vehicles
- Moments from Battersea Park
- Chain-free





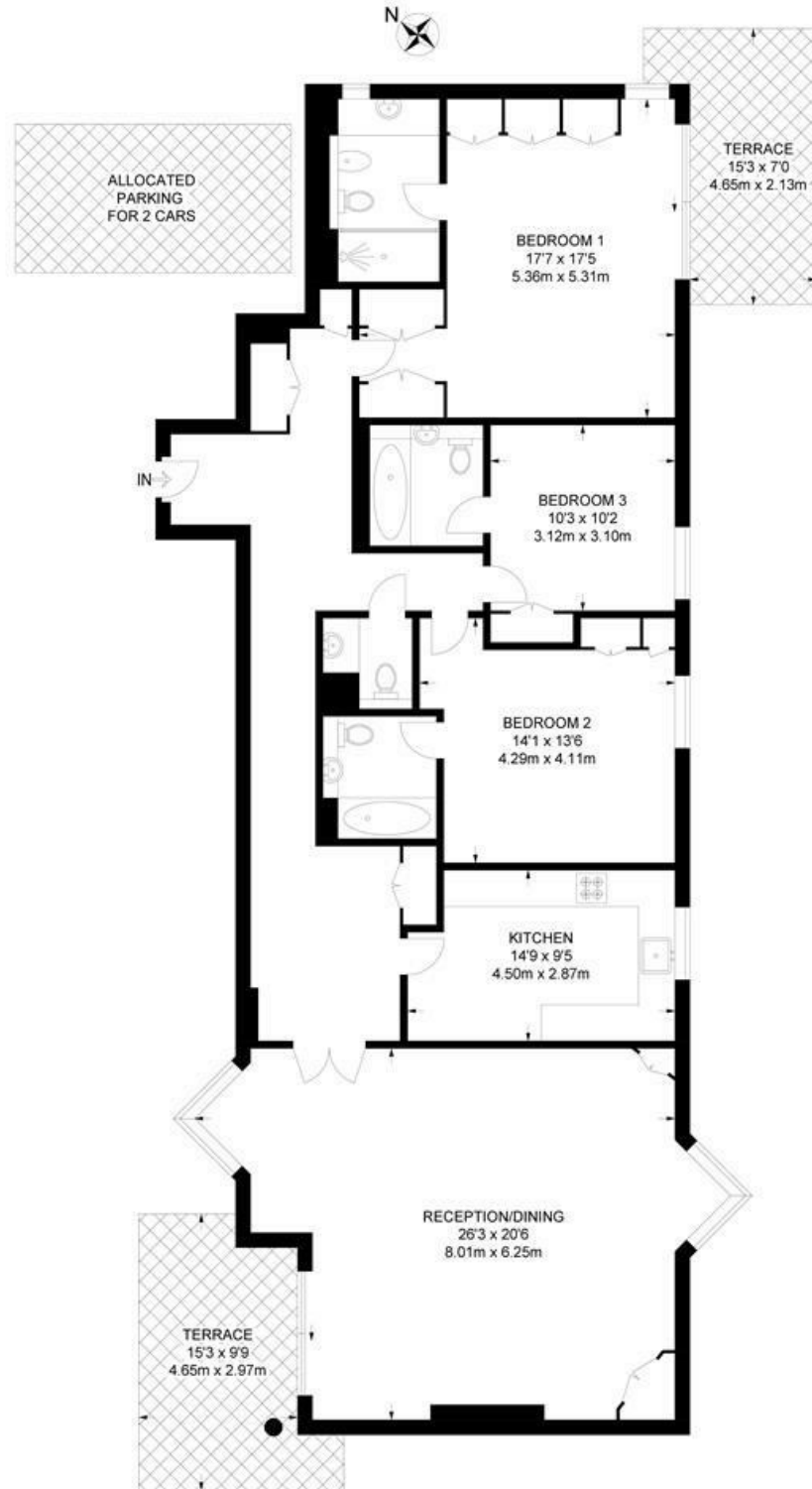




Waterside Point, Wandsworth, SW11

**Waterside Point, SW11**  
**3 Bedroom Flat**

APPROXIMATE GROSS INTERNAL AREA: 1695 SQ FT / 157.5 SQ M



SECOND FLOOR



While we try our very best, floor plans are produced as a guide only and we take no responsibility for the precise accuracy with which any property is represented.



Waterside Point, Wandsworth, SW11

