



Kendoo Road, Clapham, SW4

2 bedroom flat - conversion for sale

£576 Per Week

Property Details

Keating Estates are proud to present to market an appealing two double bedroom, two bathroom Victorian conversion, nestled on the first floor of a handsome period property on a peaceful residential street just moments from Clapham High Street. Tucked away on the curve of Kendoo Road, the building enjoys a unique setting with communal seating and a ping pong table on the adjacent pedestrianised concourse, offering a sense of community.

Neutrally finished throughout, this charming home offers over 700 square feet and combines characterful features with a smart and well-considered layout, creating a bright and versatile space ready to move into whilst offering the exciting opportunity to add your own style over time.

The generous reception room is flooded with natural light from an attractive bay window, enhanced by high corniced ceilings and contemporary flooring which add both charm and warmth. Well-proportioned, this inviting space offers plenty of room to relax, dine and entertain. The separate kitchen is arranged with timeless shaker-style cabinetry, maximising storage and worktop space. A sash window sits above the sink with leafy views, making this a particularly pleasant environment in which to cook, with the potential to add a breakfast bar for a second, more casual dining experience.

Features

- Two bedrooms
- Two bathrooms
- Victorian conversion
- Over 700 square feet
- Separate kitchen and reception
- Residential street with low traffic flow
- Clapham High Street a three-minute stroll
- Northern Line a five-minute walk
- Clapham Common a ten-minute walk

Council tax band D

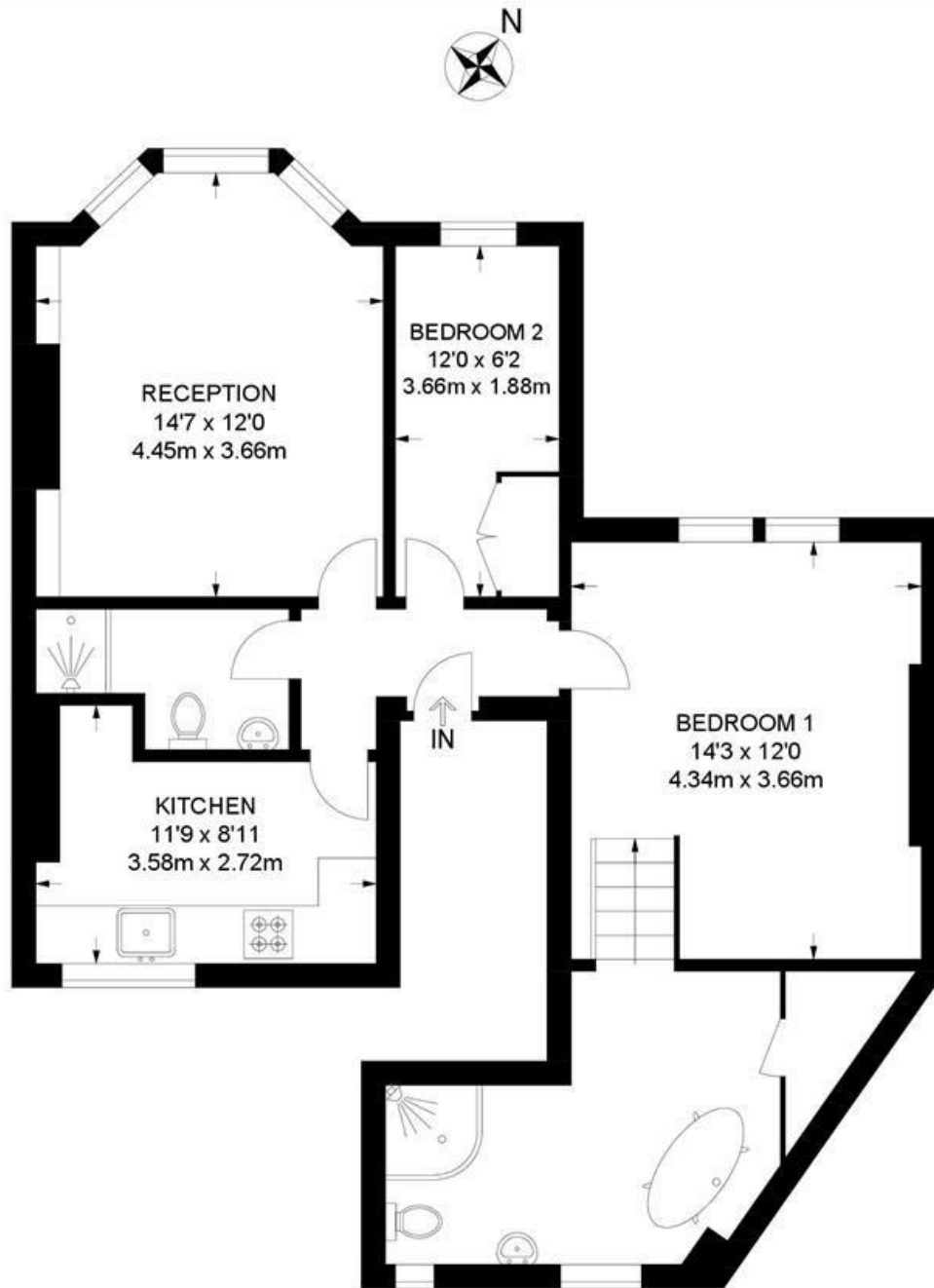
EPC rating C (78)



Kendooa Road, Clapham, SW4

Kendooa Road, SW4
2 Bedroom Flat

APPROXIMATE GROSS INTERNAL AREA: **709 SQ FT / 65.9 SQ M**



FIRST FLOOR



While we try our very best, floor plans are produced as a guide only and we take no responsibility for the precise accuracy with which any property is represented.

Kendoa Road, Clapham, SW4

